



ACIBADEM
MEHMET ALİ AYDINLAR
UNIVERSITY



2022-2023

**FACULTY OF HEALTH
SCIENCE
NURSING DEPARTMENT**

PROGRAM GUIDE



ACIBADEM

MEHMET ALI AYDINLAR
UNIVERSITY

*“Eğer bir gün benim sözlerim bilime ters düşerse
bilimi seçin.”*

K. Atatürk



MESSAGE OF RECTOR



Dear Students,

Acibadem University is a young and thematic university in the area of health sciences. There have been two great powers that have accelerated the establishment and development of Acibadem University; first of which is the wish for of Acibadem Healthcare Group to pass on the experience gained and knowledge acquired while offering quality health care services, to future generations. The second is the wish of the leading academicians of our country working within the group wishing to contribute to the health sciences by educating students and their research.

Educating professionals who are knowledgeable in all areas of health, who are researching, and questioning with our student centred, dynamic and modern education programs which encourage research is the main objective of our university.

In line with these objectives, we are paying special attention to the infrastructure work required to offer world class education. The contribution of our simulation centre to students, who in all our education programs first learn from dozens of scenarios before encountering patients, is incredible. We know that the bar on health education is now in a different place, and that Acibadem moved that bar much higher...

We are chasing all kinds of innovation to strengthen education, and we will continue to do so. Learning what we do not know is also an absolute must for us too, but we are teaching what we already know well. Our efforts to improve will always continue, and we will look to the future with strength, confidence and hope...

Ahmet Cahin, M.D., Prof.

Rector

MESSAGE OF DEAN



Dear Students,

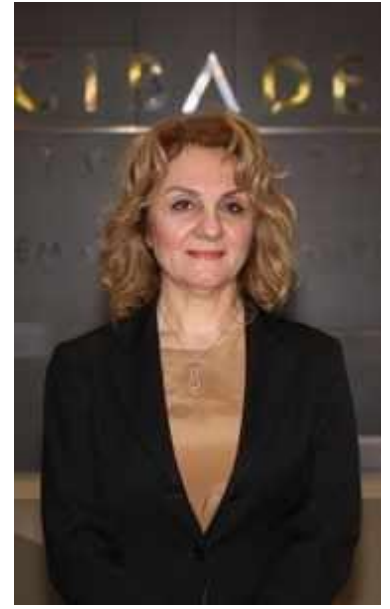
It is aimed that the professional knowledge and skill development of the students of the Faculty of Health Sciences should be at international standards. The dynamic and experienced faculty member staff created for this purpose is getting stronger with its trainers in the field of basic sciences and clinical sciences.

Kerem Campus Intellectuals have advanced technological infrastructure in addition to theoretical training, practical training, modern laboratories, nursing practical training part of our country's most well-equipped and modern at the center of simulation training are provided. Strong teaching staff, and the technological facilities of the campus, in addition to the practical training of the students, the faculty is one of the strengths of faculty members and the majority of which are equipped with the latest technology under the supervision of experienced colleagues Acibadem Saglik is the ability to hospitals and health centres.

Acibadem Mehmet Ali Aydin University Faculty of Health Sciences, the main goal of professionally qualified in their field, equipped and productive scientific thinking, students are able to use the technology very well, foreign languages, national and in the international arena itself, the institution of work is to educate health care professionals successfully able to represent our country and contemporary.

Murat Ba , Ph.D. Prof. (Dean)

MESSAGE FROM HEAD OF NURSING DEPARTMENT



Nursing is an applied health discipline based on scientific knowledge. It has a multi-faceted responsibility and role for the individual, family and society in meeting the needs such as care, relaxation, healing and information that people need at every stage of their life process. Nursing interventions applied in today's health care environment are carried out with the use of evidence based on research results. In order to meet the needs of the individual, family and society, the nurse initiates and makes clinical decisions in line with his knowledge. In order for nursing care to be effective, safe and adequate, interventions must be carefully and critically evaluated. All these reveal the necessity of continuing the theory and practice of nursing professional education with contemporary methods, with a philosophical belief in the uniqueness of human beings.

Aiming to train qualified manpower, in Acibadem University Faculty of Health Sciences Nursing Department; As in the training programs of all disciplines based on practice, theoretical knowledge and clinical experience are integral parts that complement each other. At Kerem Aydınlar Campus, which is equipped with modern technology that supports its philosophy, vision, mission and nursing education values, we put it into practice in university hospitals by providing training with simulation laboratories and equipment, where each student can transfer their theoretical education into practice.

As a result, the department aims to train world-class nurses who can provide excellent evidence-based care to the patient/healthy individual.

Ükke Karabacak Ph.D., Prof. (Head)

NURSING DEPARTMENT PURPOSE, VISION, MISSION AND VALUES

Our Goals;

The aim of the program is to train nurses employed in health care institutions at all levels, who can provide holistic care with a systematic problem-solving approach and ethical sensitivity at national and international standards.

Performance indicator: More than 90% of graduates are employed in healthcare organizations Graduates take on the role of educator, researcher and leader who will guide the development of care and profession in a team understanding with innovative applications based on scientific data and technology.

Performance indicator: They should assume the role of educator, researcher and leader, which will guide the development of the profession, by more than 25% in the process following graduation. Graduates continue their academic, professional and personal development with the awareness of lifelong learning.

Performance indicator: Continuing their professional and academic development above 25% after graduation

Our Vision;

is to be the leading, most preferred and referenced nursing education institution with its nursing education, practice and research at national and international standards.

Our Mission;

Sis to train world-class leader nurses who can provide safe, evidence-based and quality care for healthy/sick individual and society; and the nurses who think critically, make critical decisions, have ethical and universal values, research skills, team understanding, innovative, difference, sensitive to culture, and contribute to the development of the profession.,

Our Fundamental Values;

Acibadem University Faculty of Health Sciences Department of Nursing;

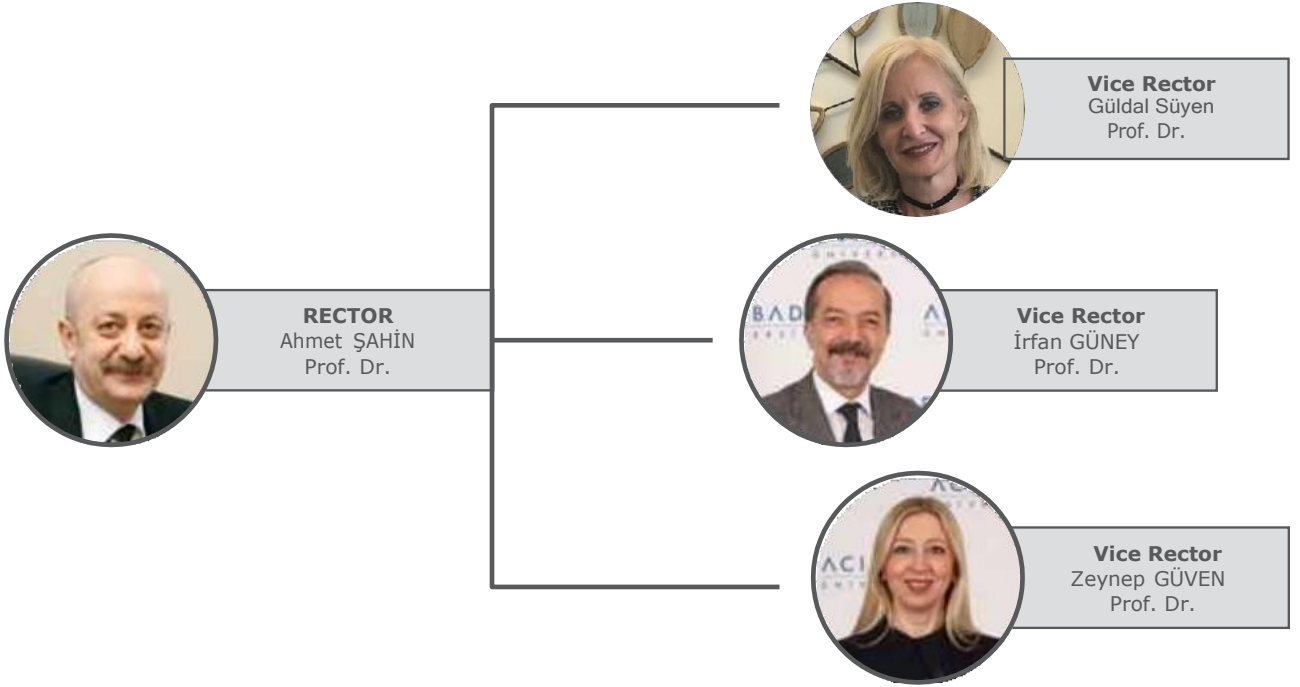
- Accepts that the human being as a whole is unique.
- Emphasizes being faithful, reliable and accountable to ethical principles in the services it provides to the society,
- Believes in the superiority of science, adopts a systematic approach,
- Believes in the importance of corporate belonging, effective communication and teamwork in success.

Education Model of the Program

Nursing undergraduate program was created in the "Classical Education Model", which is one of the programs based on the structure of the disciplines. The purpose of the disciplinary programs is to teach the concepts, theories and principles specific to that discipline, research, practice, education and management. In this way, it is essential to integrate, organize, show and develop the limits and gaps of the knowledge that falls within the field of discipline. In the structuring of the Acibadem Mehmet Ali Aydınlar University Nursing Department model, developments in meeting the health care needs of the society on a national and international scale were taken into account. The program consists of theoretical and practical parts of nursing education in the Classical Education Model. Lessons are carried out by academic members / staff who are experts in their fields. In line with the classical education model, all departments include course contents; It is planned within the framework of the main concepts of human, health/disease, environment and nursing and is carried out by using active learning methods to support students' learning at cognitive, psychomotor and affective levels. Different nursing models and theories are used while conducting courses specific to the department. Nursing Model Based on Life Activities, Functional Health Patterns Model, OMAHA Classification System, Adaptation Model, Interpersonal Communication Model and Human-People Relationship Model are the models used in the program. "Collaborative Model

- 1.A graduate nurse has professional basic theoretical knowledge, attitudes and skills in line with changing science, technology and health needs.
- 2.A graduate nurse, using the theoretical knowledge and skills she has acquired, meets the health care needs of the individual, family and society in a systematic way, based on evidence, with a holistic approach.
- 3.A graduate nurse demonstrates problem solving, conflict and crisis management competencies when necessary, using the knowledge and skills she has acquired.
- 4.A graduate nurse carries out her practices with the awareness of her legal rights and responsibilities, and acts sensitively to professional developments.
- 5.A graduate nurse, by taking a confident and effective role in the healthcare team, works in an interdisciplinary and interdisciplinary team, reflects her professional autonomy and communicates effectively.
- 6.A graduate nurse, by protecting the value and dignity of each individual, provides quality nursing care services related to the protection, development, maintenance and correction of health, in line with the principles of patient safety.
- 7.A graduate nurse uses her core professional competencies in the fields of education and management.
- 8.A graduate nurse can organize and implement projects and activities for the social environment in which she lives by collaborating with professional and non-governmental organizations with a sense of social responsibility.
- 9.A graduate nurse acts in accordance with professional, social, scientific, cultural and ethical values.
- 10.A graduate nurse can participate in research, critically evaluate scientific publications, and reflect on practice.
- 11.A graduate nurse carries out nursing practices within the framework of professional principles, in accordance with institutional policies, quality and process management.
- 12.A graduate nurse adopts the importance of lifelong learning, follows scientific, technological and current practices, develops herself and her colleagues and reflects them on care.
- 13.A graduate nurse uses English at least at "European Language Portfolio B1 General Level" in order to follow professional developments and communicate with colleagues, patients and the community.
- 14.A graduate nurse uses current information and communication technologies effectively, at least at the "European Computer Use License Basic Level", in order to access, disseminate, and use in care practices in the field.

ACIBADEM MEHMET ALİ AYDINLAR UNIVERSITY MANAGEMENT



FACULTY OF HEALTH SCIENCES MANAGEMENT



Dean
Murat Bař
Prof.



Vice Dean
Berna Eren
Assist. Prof.



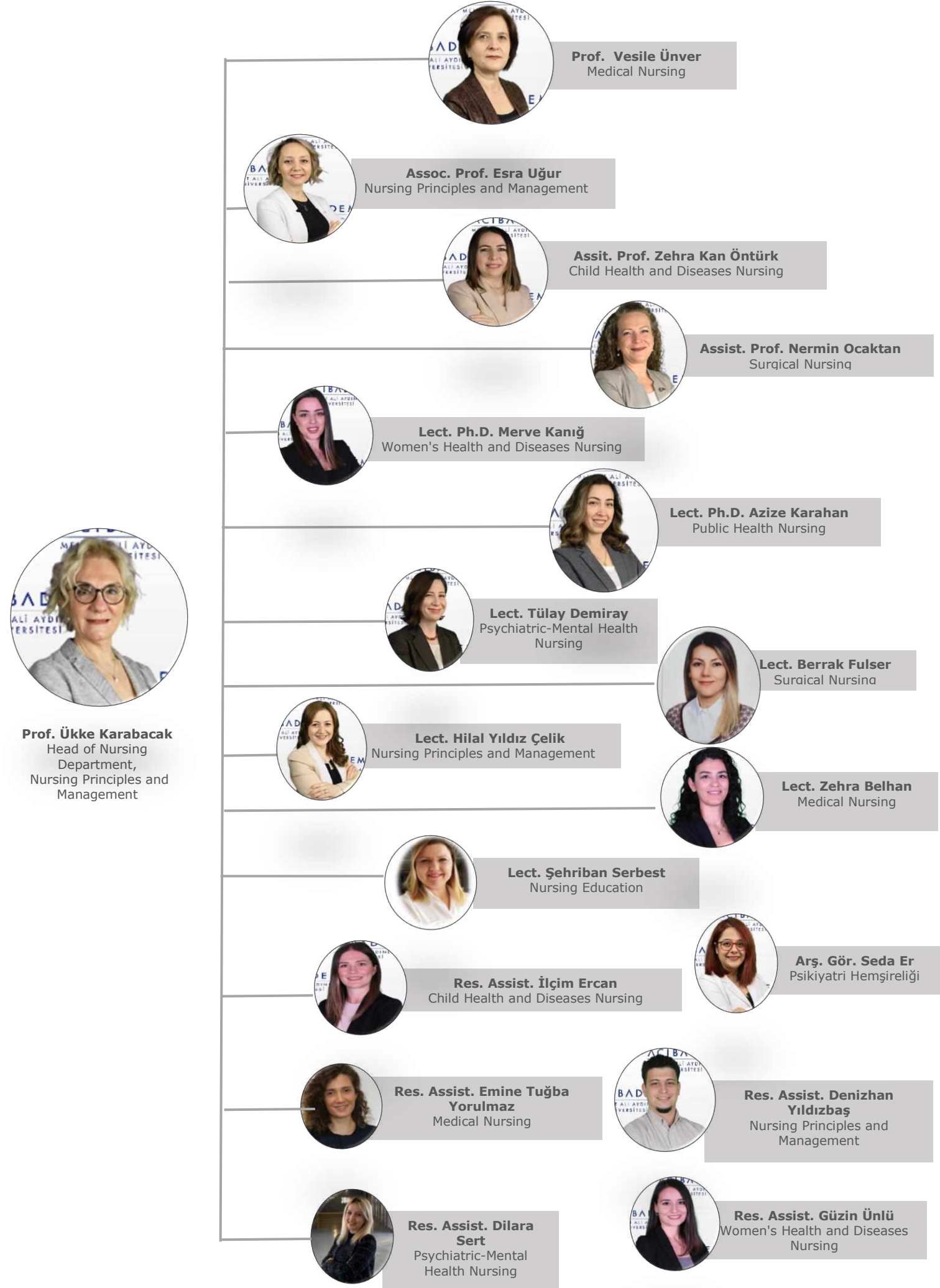
Nutrition and Dietetics
Head of Department
Prof. Murat Bař

Physiotherapy and Rehabilitation
Head of Department
Assoc. Prof. Nuray Alaca

Nursing
Head of Department
Prof. Ükke Karabacak

Healthcare Management
Head of Department
Prof. Mesut Çimen

ACADEMIC STRUCTURE OF THE DEPARTMENT OF NURSING



BOARDS AND COMMISSIONS OF THE NURSING DEPARTMENT

Boards/Comissions	Teaching Staff on Duty	Board/Comission President	Commission / Board Secretary
Board of Integration of Nursing Education and Practice	Prof. Vesile ÜNVER Assoc. Prof. Esra UĞUR Acibadem Healthcare Group Nursing Services Director Acibadem Healthcare Group Hospitals Nursing Services Managers Nursing Services Education Development Coordinator Coordinator of Operating Rooms and MSU's Business Development and Project Manager	Prof. Ükke KARABACAK	Assist. Prof. Zehra Kan ÖNTÜRK
Integration of Nursing Education and Practice Sub-Working Group	Prof. Ükke KARABACAK M.Sc. RN Şehriban SERBEST M.Sc. RN Evrim ŞAHİN M.Sc. RN Hem. Serpil İSABETLİ M.Sc. RN Muhammet DEMİR 4. Class Student Representative	Assist. Prof. Zehra Kan ÖNTÜRK	Assist. Prof. Zehra Kan ÖNTÜRK

Quality and Accreditation Commission	Prof. Vesile ÜNVER Assoc. Prof. Esra UĞUR Assist. Prof. Zehra Kan ÖNTÜRK Assist. Prof. Nermin OCAKTAN Lect. Tülay DEMİRAY Lect. Hilal YILDIZ ÇELİK Lect. Zehra BELHAN Lect. Berrak FULSER Res. Assist. İlçim ERCAN Res. Assist. Seda ER Res. Assist. Tuğba YORULMAZ Res. Assist. Denizhan YILDIZBAŞ Res. Assist. Güzin ÜNLÜ Res. Assist. Dilara SERT M.Sc. RN Şehriban SERBEST 3.ve 4th. Class Student Representatives	Prof. Ükke Karabacak	Lect. Ph.D. Merve Kaniğ/ Lect. Ph.D. Azize Karahan
Quality and Accreditation Commission: Strategic Planning Sub-Working Group	Assist. Prof. Zehra Kan ÖNTÜRK Lect. Ph.D. Azize Karahan Res. Assist. Dilara SERT 3.ve 4th. Class Student Representatives	Assoc. Prof. Esra UĞUR	Lect. Tülay DEMİRAY
Quality and Accreditation Commission: Continuous Improvement Sub-Working Group	Assoc. Prof. Esra UĞUR M.Sc. RN Şehriban SERBEST Lect. Ph.D. Merve KANIĞ Lect. Tülay DEMİRAY	Assist. Prof. Zehra Kan ÖNTÜRK	Res. Assist. Seda ER
The Curriculum Education Commission	Prof. Vesile ÜNVER Assoc. Prof. Esra UĞUR Assist. Prof. Zehra Kan ÖNTÜRK Assist. Prof. Nermin OCAKTAN Lect. Ph.D. Merve KANIĞ Lect. Ph.D. Azize KARAHAN Lect. Tülay DEMİRAY M.Sc. RN Şehriban SERBEST 2., 3.ve 4th. Class Student Representatives	Prof. Ükke KARABACAK	Lect. Hilal YILDIZ ÇELİK/ Res. Assist. Dilara SERT

Web Supervisor	Res. Assist. Emine Tuğba YORULMAZ	Prof. Ükke KARABACAK	Res. Assist. İlçim ERCAN
Graduation Committee	The advisor and coordinators of the class graduated from the faculty members / staff of the Nursing Department are members of the committee.		
Alumni Tracking Commission	Lect. Ph.D. Merve KANIĞ Lect. Ph.D. Azize KARAHAN Lect. Hilal YILDIZ ÇELİK Res. Assist. İlçim ERCAN Res. Assist. Seda ER Res. Assist. Emine Tuğba YORULMAZ	Assist. Prof. Nermin OCAKTAN	M.Sc. RN Şehriban SERBEST
Measurement and Evaluation Commission	Assist. Prof. Zehra Kan ÖNTÜRK Lect. Ph.D. Azize KARAHAN Lect. Zehra BELHAN Lect. Berrak FULSER Res. Assist. Seda ER Res. Assist. Emine Tuğba YORULMAZ Res. Assist. Güzin ÜNLÜ	Prof. Vesile ÜNVER	Res. Assist. İlçim ERCAN/ Res. Assist. Denizhan YILDIZBAŞ
Student Adaptation and Tracking Commission	Lect. Tülay DEMİRAY Res. Assist. Dilara SERT 1, 2, 3 and 4. Class Student Representatives	Prof. Vesile ÜNVER	Assist. Prof. Nermin OCAKTAN
Social and Scientific Activity Commission	Lect. Zehra BELHAN Lect. Berrak FULSER Res. Assist. Denizhan YILDIZBAŞ Res. Assist. Güzin ÜNLÜ 1, 2, 3 and 4. Class Student Representatives	Assist. Prof. Nermin OCAKTAN	Res. Assist. Emine Tuğba Yorulmaz/ Res. Assist. Güzin ÜNLÜ

NURSING DEPARTMENT CLASS CONSULTANTS AND COORDINATORS

1st Grade Consultant



Lect. Zehra Belhan

1st Grade Coordinators



Res. Assist. İlçim
Ercan



Res. Assist. Dilara
Sert Kasım

2nd Grade Consultant



Assoc. Prof. Esra
Uğur

2nd Grade Coordinator



Res. Assist.
Denizhan Yıldızbaş

ADMINISTRATIVE UNITS



Merve ÇİÇEK



NAME SURNAME	TITLE	WORKING AREAS
Bahar GÜLHAN KURU	Director of Student Affairs	
Cem MEDE	Automation and Reporting Executive	All Institute/Faculty/Vocational Schools
Merve ÇİÇEK	Student Affairs Specialist	Faculty of Health Sciences

LIBRARY



Centrally located on Kerem Aydınlar Campus, the library has a collection that supports the academic programs of the university and publications mainly consist of Health Sciences. As part of the Central Library, Acibadem Mehmet Ali Aydınlar University Atakent Hospital Library was opened in 2014 and Acibadem Maslak Hospital Library was opened in 2015.

The central and branch libraries have a total area of 1441.16 square meters and a seating capacity of 368 people. Offering a modern and comfortable working environment to its users, the library is open 24/7 during the academic year. The library has a computer study room and 18 study rooms that users can reserve. Printed Collection: There are 29,092 materials in the types of books, printed periodicals, theses, CD-Roms and DVDs in Central, Atakent and Maslak Libraries.

Electronic Collection: With 36 databases subscribed by the library, 61,652 e-journals, 151,660 e-books, 2,592,727 full-text theses, evidence-based medicine databases, bibliometric tools and indexes, and newspapers can be accessed. ACU members can access to the subscribed databases from out of the campus.

Library Trainings: Library staff provide library training to students in line with the demands of faculties and colleges. Trainings can be done in one part of the course, one or more sessions can be organized. In the trainings, information is given on the use of library catalogs, access to library databases and searching for academic publications. In addition, author workshops for young academics and graduate students and user trainings specific to certain databases can be organized.

INTERNATIONAL OFFICE

The ERASMUS+ Program covers projects that enable higher education institutions to realize student and staff (academic and administrative) mobility by partnering with higher education institutions in the program countries. With this activity, it is aimed to improve the qualifications of higher education students and staff and to provide these people with professional development opportunities abroad. Thus, to higher education or some higher education institutions to increase opportunities for overseas training of new graduates in continuing education to gain the skills they need to make the transition from business to higher education or improve their skills to obtain knowledge of the practice of pedagogical personnel, it is intended to work.

Acibadem Mehmet Ali Aydınlar University has been carrying out student and staff (academic and administrative) mobility within the scope of the program since 2009.

Students, faculty members / staff and administrative staff of the Faculty of Health Sciences can participate in Erasmus+ programs at another higher education institution during certain periods. Acibadem University International Students and Academic Relations Office (UO) organizes an information meeting about program promotion and processes every year during the application periods. Information about the applications is announced on the website of our university and also announced to the students and staff by e-mail.

LABRATORY AND CLINICAL RACTICE



CASE

The central purpose; do some academic work on simulation and modeling to develop projects, to organize courses and seminars, these programs and applications through the University's public institutions and agencies, the private sector and international organizations to contribute to the improvement of relations with it.

CASE consists of two centers - Clinical Simulation and Advanced Flat Endoscope - Robotic Surgery Training Center, which is located within the structure of Acıbadem Mehmet Ali Aydınlar University. Clinical Simulation Center A Block 4 on an area of 455.2 m². It is located on the floor. In the center, a nursing simulation lab 1, 2 emergency room, delivery room 1, 1, intensive care, 1 operating room, medicine preparation room 1, 1 exam, 1 Skill Lab, Control Room 8, 4 ratings, rooms, patient rooms, 1 bed, and male / female peeling consists of a room. Advanced Endoscopic - Robotic Surgery Training Center CASE A Block D -1 on an area of 293.66 m².on the floor.

The center consists of 2 skill laboratories, 2 evaluation rooms, 4 patient examination rooms, makeup room, male /female Decollete cabinets, student lobby and 2 inter-body sections. The center is accredited by the European Community under the umbrella of the European Association of Medical Professionals (UEMS), the European Network of Accredited Skill Centers (NASCE) and the Association for Simulation in Health (SSH) accreditation certificates.

Computer and Language Laboratory



17 computers in the central library, 27 computers in the English laboratory, 143 computers in the computer laboratory, and 18 computers at various points on campus were made available to students. In addition, SPSS 22.0 and MedCalc statistical package programs are available for students and faculty to analyze and use for educational purposes. Students check the current announcements from 30 digital boards located on campus. There is one computer in the rooms of the faculty members / staff of the Nursing Department. These computers are connected to a copier device that is a printer, fax and scanner feature that the department uses in common.



2022 – 2023 ACADEMIC YEAR
ASSOCIATE / UNDERGRADUATE ACADEMIC CALENDAR

FALL SEMESTER

Dates determined by ÖSYM will be announced.	Final Registration and Fee Deposits of Candidates Placed in Our University as a Result of 2022 YKS (Through E-Registration Method)
Dates determined by ÖSYM will be announced.	Final Registration and Fee Deposits of Candidates Placed in Our University as a Result of 2022 YKS (Through Face to Face Registration Method)
Dates determined by ÖSYM will be announced in accordance with the registration dates	2022 Exemption from English Courses and Placement Test (APPT) of Students Who Have Definite Registration in the Departments / Programs of Our University with Turkish Medium Education as a result of YKS
06-07-08 September 2022	ACCEPT for Students Who Failed the English Preparatory Program in the 2021-2022 Academic Year and Are Eligible to Take the English Proficiency (ACCEPT) Exam
Dates determined by ÖSYM will be announced in accordance with the registration dates.	*2022 Nutrition and Dietetics, Pharmacy, Nursing, Molecular Biology and Genetics, Psychology, Medicine, Biomedical Engineering, Computer Engineering Departments of our University as a result of YKS Compulsory English Preparatory Program Placement Exam (ACUPEP PPT 1st stage) * Optional English Preparatory Program Students Placement Exam (ACUPEP PT single stage)
Dates determined by ÖSYM will be announced in accordance with the registration dates	* Compulsory English Preparatory Program Exemption Examination of Students Placed in Nutrition and Dietetics, Pharmacy, Nursing, Molecular Biology and Genetics, Psychology, Medicine, Biomedical Engineering, Computer Engineering Departments of our University as a result of 2022 YKS (ACUPEP PPT 2nd and 3rd stage)
Dates determined by ÖSYM will be announced in accordance with the registration dates	Final Registration and Fee Deposits of Candidates Placed as a Result of 2022 YKS Additional Placement
Dates determined by ÖSYM will be announced in accordance with the registration dates	<ul style="list-style-type: none">2022 English Preparatory Program Exemption and Placement Examination (ACUPEP PPT) for Students Who Have Definite Enrollment in the English Language Departments of our University (Nutrition and Dietetics, Pharmacy, Nursing, Molecular Biology and Genetics, Psychology, Medicine, Biomedical

	<p>Engineering, Computer Engineering) as a result of YKS Additional Placement,</p> <ul style="list-style-type: none"> • 2022 Optional English Preparatory Program Students' Placement Exam (APPT), who have a definitive enrollment in the departments / programs of our university whose language of education is Turkish, as a result of YKS Additional Placement
Dates determined by ÖSYM will be announced in accordance with the registration dates	2022 Exemption from English Courses and Placement Exam (APPT) of Students Who Have Definite Registration in the Departments / Programs of Our University with Turkish Language of Education as a result of Additional Placement of YKS
19 September 2022	Fall Semester Curriculum Announcement
19 September 2022 – 23 September 2022	Deadline for Payment of School Fees for Students Registered Before 2022
26 September 2022 – 07 October 2022	<ul style="list-style-type: none"> • Course Registration • As a result of the OSYS, the students who are successful in the first course/ preparatory exam and will take the first course will be enrolled in the fall semester by the Student Affairs Directorate. These students will only choose their elective courses themselves. • Other Students will carry out the Course Registration themselves from the Student Information System.
26 September 2022	Course Transfer and Exemption Applications of Courses Learned in Previous Learning
03 October 2022	Fall Semester Beginning
10 October 2022	Final Day for Consultant Instructors to Approve Course Enrollments
11 October 2022 – 14 October 2022	Add – Drop Course
17 October 2022	Deadline for Consultant Instructors to Approve Add-Drop Courses
05 December 2022	Final Day for the Sending of Course Programs for the Courses to be Opened in the Spring Semester by Academic Units to the Classroom Planning Unit for Classroom Allocation
16 December 2022	Deadline for Grade entry for the Semester
26 December 2022	Final Day for Fall Semester Final Exam Program to be Sent to the Classroom Planning Unit by Academic Units
30 December 2022	The Last Day for Course Instructors to Enter their Absences into the System in order for the Students Who Fail out of Absence to See their "Absent-NA" Notes
02 January 2023	Final Day for Submission of Fall Semester Final Exam Program to the Rectorate for Announcement
06 January 2023	Final Day for Notifying the Course Schedules and Activity Definitions of the Courses to be Opened in the Spring Semester to the Department of Student Affairs by the Classroom Planning Unit

06 January 2023	Fall Semester
09 January 2023	Announcement of Fall Semester Final Exam Program
16 January 2023 – 27 January 2023	Fall Semester End-of-Semester Exams
30 January 2023	Final Grade Entry Date of Fall Semester Final Exam Grades
30 January 2023 – 17 February 2023	MID-TERM BREAK
31 January 2023	Final Day for Fall Semester Make-up Exam Program to be Sent to the Classroom Planning Unit by Academic Units
02 February 2023	Final Day for Submission of Fall Semester Make-up Exam Program to the Rectorate with Classrooms Designated
03 February 2023	Announcement of the Make-up Exam Program Fall Semester
06 February 2023	Announcement of Spring Term Course Schedule
06 February 2023	Course Transfer and Exemption Applications of Courses Learned in Previous Learning
06 February 2023 – 08 February 2023	Fall Semester Make-up Exams
09 February 2023	Final Grade Entry Date of Fall Term Make-up Exam Grades
SPRING SEMESTER	
06 February 2023-10 February 2023	Final Day for the Payment of Spring Semester School Fees
13 February 2023 – February 24, 2023	Course Registration
20 February 2023	Spring Semester Start
27 February 2023	Final Day for Consultant Instructors to Approve Course Enrollments
28 February 2023 – 03 March 2023	Course Add – Drop
06 March 2023	Deadline for Advisors to Approve Add-Drop
14 April 2023	Final Day for Notification of Changes in Made in Education Plans in 2022-2023 Academic Year to be presented to the Rectorate
12 May 2023	Deadline for Grade Entries for the semester
18 May 2023	Final Day for the Submission of the Spring Semester Final Exam Program by Academic Units to the Classroom Planning Unit
24 May 2023	The Last Day for Course Instructors to Enter their Absences in the System in order for the Students Who Fail out of Absence to See their "Absent-NA" Notes
29 May 2023	Final Day for Sending the Spring Semester Final Exam Program to the Rectorate for Announcement
31 May 2023	End of Spring semester
05 June 2023	Announcement of Spring Semester Final Exam Programs
05 June 2023	Final Day to Send Programs of the Courses to be Opened in the Fall Semester of 2023-2024 to the

	Classroom Planning Unit for Classroom Allocation by Academic Units
12 June 2023 – 23 June 2023	Spring Term Final Exams
26 June 2023	Final Grade Entry Date of Spring Semester Final Exam Grades
28 June 2022	Final Day for Submission of Spring Semester Make-up Exam Program by Academic Units to Classroom Planning Unit
04 July 2023	Final Day for Sending the Spring Semester Make-up Exam Program to the Rectorate with Designated Classrooms
05 July 2023	Spring Semester Make-up Exam Program Announcement
10 July 2023 – 12 July 2023	Spring Semester Re-sit Exams
13 July 2023	Final Grade Entry Date of Spring Semester Make-up Exam Grades
17 July 2023	Final Day for the Classroom Planning Unit to Notify the Directorate of Student Affairs about the Course Programs and Activity Definitions of the Courses to be Offered in the Fall Semester of 2023 - 2024
HORIZONTAL TRANSITION CALENDAR	
FALL SEMESTER – Inter-institutional – In-house Undergraduate Transfer	
18 July 2022 – 29 July 2022	Inter-Institutional and Intra-Institutional Undergraduate Transfer Applications
02 August 2022 – 03 August 2022	Exemption from English Preparatory Program and Placement Exam (ACUPEP PPT) of Students who come to English Language Departments via Institutional Undergraduate Transfer
10 August 2022	Final Day for Notification of Inter-Agency and In-house Undergraduate Transfer Results and Adaptations by Related Academic Units to the Rectorate
12 August 2022	Announcement of Inter-Institutional and Intra-Institutional Undergraduate Transfer Results on Our Website
15 August 2022 – 17 August 2022	Final Registration and Fee Deposits of Candidates Who Have Acquired Inter-Agency and Intra-Institutional Undergraduate Transfer Rights
19 August 2022	Final Registration and Fee Deposits of Substitute Candidates Who Have Acquired Inter-Agency and Intra-Institutional Undergraduate Transfer Rights
It will be held with the students enrolled with YKS in 2022.	Exemption from English Courses and Placement Exam (APPT) of Students who come to Departments / Programs with Turkish Language of Education via Undergraduate Transfer Between Institutions
FALL SEMESTER – Undergraduate Transfer by Central Score (Additional Article-1)	
01 August 2022 – 12 August 2022	Undergraduate Transfer by Central Score (Additional Article 1) Applications
August 16, 2022 – August 17, 2022	Undergraduate Transfer According to the Central Score for English Language Departments (Additional Article

	1) and Exemption from the English Preparatory Program and Placement Exam (ACUPEP PPT)
19 August 2022	Final Day for Notification of the Results and Adaptations of Undergraduate Transfer According to the Central Score (Additional Article 1) by the Related Academic Units to the Rectorate
22 August 2022	Announcement of Undergraduate Transfer by Central Score (Additional Article 1) and Undergraduate Transfer Results on our Website
23 August 2022 – August 25, 2022	Final Registration and Fee Deposits of Candidates Attaining the Right to Undergraduate Transfer with Undergraduate Transfer by Central Point (Additional Article 1)
It will be held with the students enrolled with YKS in 2022.	Exemption from English Courses and Placement Exam (APPT) of Students who come with Undergraduate Transfer (Additional Article 1) according to the Central Score to Departments / Programs whose Language of Education is Turkish
29 August 2022	Final Registration and Fee Deposits of Substitute Candidates Receiving Undergraduate Transfer Right with Undergraduate Transfer by Central Point (Additional Article 1)
SPRING SEMESTER	
06 February 2023 – 10 February 2023	Associate Degree Inter-Agency and Associate Degree In-house Undergraduate Transfer Applications (The same dates will be applied if an undergraduate transfer quota is opened within the scope of Central Placement Score (Additional Article-1))
13 February 2023	Undergraduate Transfer Students' Exemption from English Preparatory Program/English Courses and Placement Exam (ACUPEP PPT) English Exam
14 February 2023	Final Day for Notification of Associate Degree Inter-Agency and Associate Degree In-house Undergraduate Transfer Results by Related Academic Units to the Rectorate
15 February 2023	Announcement of Associate Degree Inter-Agency and Associate Degree In-house Undergraduate Transfer Results on our Website
16 – 17 February 2023	Final Registration and Fee Deposits of Candidates Receiving Associate Degree Inter-Agency and Associate Degree In-house Undergraduate Transfer Rights
20 February 2023	Final Registration and Fee Deposits of Substitute Candidates Receiving Associate Degree Inter-Agency and Associate Degree In-house Undergraduate Transfer Rights
DUAL MAJOR / SUB-BRANCH CALENDAR	
FALL SEMESTER	
15 August 2022 – 26 August 2022	Fall Semester Double Major, Minor Applications

01 September 2022 – 02 September 2022	Language Exam (ACUPEP PPT) of Students Registered in Turkish Language Programs and Applied to English Language Programs
09 September 2022	Deadline for Submitting Double Major, Minor Application Results to the Rectorate
13 September 2022	Announcement of Double Major, Minor Application Results on our Website
14 September 2022 – 16 September 2022	Registration of Candidates Admitted to Fall Semester Double Major/Minor
19 September 2022	Registration of Substitute Candidates Accepted in Fall Semester Double Major/Minor,
SPRING SEMESTER	
06 February 2023 – 10 February 2023	Spring Semester Double Major, Minor Applications
13 February 2023	Language Exam (ACUPEP PPT) of Students Registered in Programs whose medium of instruction is Turkish and Applied to Programs whose medium of instruction is English
14 February 2023	Deadline for Submitting Double Major, Minor Application Results to the Rectorate
15 February 2023	Announcement of Double Major, Minor Application Results on our Website
16 February 2023 – 17 February 2023	Registration of Candidates Admitted to Double Major, Minor with Spring Semester
20 February 2023	Registration of Substitute Candidates Accepted in Spring Semester Double Major, Minor
2022 – 2023 STUDENT ADMISSION QUOTA APPLICATION AND EVALUATION CALENDAR FROM ABROAD	
01 February 2022 – 31 July 2022	Applications and Evaluations of Foreign Students
First Day After YÖK Quota Announcement – 16 September 2022	Final Registration of Foreign Students
16 August 2022 (1st Stage) 17-18- 19 August 2022 (2nd and 3rd Stage)	Foreign Language Exam (ACUPEP PPT) for Foreign Students Who Are Placed in Departments/Programs whose medium of instruction is English
16 September 2022	Last Day of Foreign Students' Tuition Fees
10 October 2022	Foreign Language Exam (ACUPEP PPT) for Foreign Students Who Are Placed in Departments/Programs whose medium of instruction is Turkish
2023 – 2024 STUDENT ADMISSION QUOTA APPLICATION AND EVALUATION CALENDAR FROM ABROAD	
01 February 2023 – 31 July 2023	Start of Foreign Students' Applications
GRADUATION CEREMONY	
It will be determined by the Rectorate with the relevant units.	
SUMMER SCHOOL	
05 July 2023	Announcement of Courses Planned to Be Opened in Summer School

10 July 2023 – 13 July 2023	Summer School Course Registration /Payment of Fees
14 July 2023	Announcement of Summer School Curriculum
14 July 2023	Final Day for Consultant Instructors to Approve Course Enrollments
17 July 2023	Summer School Beginning
17 July 2023 – 20 July 2023	Add – Drop Period
21 July 2023	Summer School Advisor Approval to Course Add Drop
18 August 2023	Final Day for Submission of Summer School Semester-End Exam Program by Academic Units to Classroom Planning Unit
23 August 2023	Final Day for Submission of Summer School Final Exam Program to the Rectorate
28 August 2023	Announcement of Summer School Final Exam Schedule
01 September 2023	Summer school
04 September 2023 – 05 September 2023	End of Summer School Exams
06 September 2023	Final Grade Entry Date of Summer School End Exam Grades
11 September 2023	Summer School Make-up Exam Program Announcement
12 September 2023 – 13 September 2023	Summer School Make Up Exams
14 September 2023	Final Grade Entry Date of Summer School Make-up Exam Grades
Additional Exams	
09 February 2023 – 14 February 2023	Fall Semester 1st Additional Exam Application Dates
20 February 2023 – 23 February 2023	Fall Semester 1st Additional Exams
01 March 2023 – 06 March 2023	Fall Semester 2nd Additional Exam Application Dates
10 March 2023 – 15 March 2023	Fall Semester 2nd Additional Exams
13 July 2023 – 18 July 2023	Spring semester Additional Exam Application Dates
24 July 2023 – 27 July 2023	Spring semester Additional Exams
02 August 2023 – 07 August 2023	Spring semester Additional Exam Application Dates
11 August 2023 – 16 August 2023	Spring semester Additional Exams
14 September 2023 – 19 September 2023	Summer Semester 1st Additional Exam Application Dates
25 September 2023 – 28 September 2023	Summer Semester 1st Additional Exams
04 October 2023 – 09 October 2023	Summer Semester 2nd Additional Exam Application Dates
16 October 2023 – 19 October 2023	Summer Semester 2nd Additional Exams

ACIBADEM MEHMET ALİ AYDINLAR UNIVERSITY
HEALTH SCIENCE FACULTY
NURSING DEPARTMENT LESSON PLAN

I. Semester					
Course Code	Course Name	T	P	LC	ECTS
NRS 101	Introduction to Health Sciences and Nursing	2	0	2	4
NRS 109	Health Assessment	2	4	4	9
NRS 105	Anatomy I	1	2	2	3
NRS 107	Physiology I	2	0	2	3
PSI 101	Introduction to Psychology	2	0	2	3
BIL 101	Introduction to Computers I	1	2	2	2
ENG105	English for Academic Purposes I	2	2	3	5
ATA 101	Ataturk Principles and the History of Turkish Revolution-I	2	0	2	1
TUR 101	Turkish Language-I	2	0	2	1
ACU	Elective courses I	2	0	2	1
Total		18	10	23	32

II. Semester					
Course Code	Course Name	T	P	LC	ECTS
NRS 102	Basic Principles and Practices in Nursing	4	12	10	13
NRS 114	Clinical Microbiology and Infectious Diseases	1	2	2	2
NRS 110	Anatomy II	1	2	2	3
NRS 108	Physiology II	2	0	2	3
NRS 112	Innovations in Health Care and Technology	2	0	2	2
BIL 102	Introduction to Computers II	1	2	2	2
ENG 106	English for Academic Purposes II	2	2	3	5
ATA 102	Ataturk Principles and the History of Turkish Revolution-II	2	0	2	1
TUR 102	Turkish Language-I	2	0	2	1
Total		17	20	27	32

III. Semester					
Course Code	Course Name	T	P	LC	ECTS
NRS 207	Medical Nursing	4	12	10	13
NRS 209	Principles and Methods in Nursing Education	3	0	3	5
NRS 205	Nursing Specific Pharmacology	2	0	2	3
NRS 241	Pathology	2	0	2	2
NRS 237	Human Behaviour and Communication	2	2	3	3
ACU XXX	Elective Courses II	2	0	2	1
Total		15	14	22	27

IV. Semester					
Course Code	Course Name	T	P	LC	ECTS
NRS 204	Surgical Nursing	4	12	10	13
NRS 210	Sociology of Health	2	0	2	2
NRS 206	Epidemiology	2	0	2	2
NRS 234	First and Emergency Care	2	0	2	4
NRS 208	Ethics in Health Sciences	2	2	3	6
ACU XXX	Elective courses III	2	0	2	1
NRSEXXX	Spring Term Nursing Elective Subject Specific Courses (NRSE)	2	0	2	4
Total		16	14	23	32

V. Semester					
Course Code	Course Name	T	P	LC	ECTS
NRS 303	Women's Health and Diseases Nursing	4	12	10	13
NRS 305	Biochemistry	2	0	2	3
MIS 313	Research Methods	1	2	2	4
ACU XXX	Elective Courses IV	2	0	2	1
NRSEXXX	Fall Term Nursing Elective Subject Specific Courses (NRSE)	2	0	2	4
Total		11	14	18	25

VI. Semester					
Course Code	Course Name	T	P	LC	ECTS
NRS 304	Child Health and Diseases Nursing	4	12	10	13
NRS 306	Management in Nursing	3	0	3	5
NRS 308	Evidence Based Nursing	2	2	3	5
MIS 314	Biostatistics	1	2	2	3
NRSEXXX	Spring Term Nursing Elective Subject Specific Courses (NRSE)	2	0	2	4
Total		12	16	20	30

VII. Semester					
Course Code	Course Name	T	P	LC	ECTS
NRS 401	Mental Health and Psychiatric Nursing	4	12	10	13
NRS 403	Public Health Nursing	4	12	10	13
NRS 405	Community Awareness Project	3	0	3	6
Total		11	24	23	32

VIII. Semester					
Course Code	Course Name	T	P	LC	ECTS
	Elective Specific Courses I	2	16	10	15
NRS 422	Surgical Nursing				
NRS 424	Women's Health and Diseases Nursing				
NRS 428	Mental Health and Psychiatric Nursing				
NRS 434	Principles and Methods in Nursing Education				
	Elective Specific Courses II	2	16	10	15
NRS 420	Medical Nursing				
NRS 426	Child Health and Diseases Nursing				
NRS 430	Public Health Nursing				
NRS 436	Management in Nursing				
Total		4	32	20	30

Fall Term Nursing Elective Subject Specific Courses (NRSE)		T	P	LC	ECTS
NRSE 301	Medication Management in Nursing	2	0	2	4
NRSE 303	Critical Thinking in Nursing	2	0	2	4
NRSE 305	Forensic Case Recognition	2	0	2	4
NRSE 307	Innovation and Entrepreneurship in Nursing	2	0	2	4
NRSE 309	Transcultural Nursing	2	0	2	4
NRSE 311	Growth and Development	2	0	2	4
NRSE 313	Neonatal Nursing	2	0	2	4
NRSE 315	Leadership in Nursing	2	0	2	4
NRSE 317	Orthopedic Nursing	2	0	2	4
NRSE 319	Wound Nursing	2	0	2	4

Spring Term Nursing Elective Subject Specific Courses (NRSE)		T	P	LC	ECTS
NRSE 202	Palliative Care	2	0	2	4
NRSE 204	Nursing of Elderly Health	2	0	2	4
NRSE 206	Home Care	2	0	2	4
NRSE 208	Nutrition in Illnesses	2	0	2	4
NRSE 210	Assertivity in Nursing	2	0	2	4
NRSE 212	Quality Management	2	0	2	4
NRSE 214	Sexual and Reproductive Health	2	0	2	4
NRSE 216	Psychodrama	2	0	2	4
NRSE 218	Rehabilitation Nursing	2	0	2	4
NRSE 220	Patient and Employee Safety	2	0	2	4
NRSE 222	Children and Communication	2	0	2	4
NRSE 224	Regulation of Fertility	2	0	2	4

NURSING DEPARTMENT

2022-2023

*FIRST
SEMESTER-
FALL-
SCHEDULE*



I. GRADE FALL SEMESTER SCHEDULE

I. Semester					
Course Code	Course Name	T	P	LC	ECTS
NRS 101	Introduction to Health Sciences and Nursing	2	0	2	4
NRS 109	Health Assessment	2	4	4	9
NRS 105	Anatomy I	1	2	2	3
NRS 107	Physiology I	2	0	2	3
PSI 101	Introduction to Psychology	2	0	2	3
BIL 101	Introduction to Computers I	1	2	2	2
ENG105	English for Academic Purposes I	2	2	3	5
ATA 101	Ataturk Principles and the History of Turkish Revolution-I	2	0	2	1
TUR 101	Turkish Language-I	2	0	2	1
ACU	Elective courses I	2	0	2	1
Total		18	10	23	32

T.C
ACIBADEM UNIVERSITY
FACULTY OF HEALTH SCIENCE
NURSING (ENGLISH)
I. CLASS I. SEMESTER WEEKLY LESSON SCHEDULE
2022-2023 ACADEMIC YEAR

	MONDAY	TUESDAY	WEDNESDAY	THURSDAY	FRIDAY
8.30- 9.10		Physiology I NRS 107 Öğr.Gör. Tülin Altınoluk ONLINE		Ataturk Principles and the History of Turkish Revolution I ATA 101 ONLINE	Anatomy I NRS 105 Öğr. Gör. Abdulveli İsmailoğlu HİBRİT A 204
9.20-10.00	Introduction to Health Science and Nursing NRS 101 Doç.Dr.Esra Uğur IN CLASS C 601	Physiology I NRS 107 Öğr.Gör. Tülin Altınoluk ONLINE	English for Academic Purposes I ENG 105 Dr. Nafiye Çiğdem Aktekin IN CLASS	Ataturk Principles and the History of Turkish Revolution I ATA 101 ONLINE	Anatomy I NRS 105 Öğr. Gör. Abdulveli İsmailoğlu HİBRİT A 204
10.10-10.50	Introduction to Health Science and Nursing NRS 101 Doç.Dr.Esra Uğur IN CLASS C 601	Introduction to Psychology PSI 101 Öğr.Gör.Cansu Aktok ONLINE	English for Academic Purposes I ENG 105 Dr. Nafiye Çiğdem Aktekin IN CLASS		Anatomy I NRS 105 Öğr. Gör. Abdulveli İsmailoğlu HİBRİT A 204
11.00 -11.40	Introduction to Computers I BIL 101 Öğr. Gör. Murat Kaya IN CLASS A 204	Introduction to Psychology PSI 101 Öğr.Gör.Cansu Aktok ONLINE	Health Assessment NRS 109 Doç.Dr.Esra Uğur IN CLASS C 301	English for Academic Purposes I ENG 105 Dr. Nafiye Çiğdem Aktekin ONLINE	Turkish Language I TUR 101 ONLINE
11.50 -12.30			Health Assessment NRS 109 Doç.Dr.Esra Uğur IN CLASS C 301	English for Academic Purposes I ENG 105 Dr. Nafiye Çiğdem Aktekin ONLINE	Turkish Language I TUR 101 ONLINE
LUNCH BREAK					
13.30 -14.10	Health Assessment NRS 109 Doç.Dr.Esra Uğur LAB IN CLASS A 204		Introduction to Computers I BIL 101 Öğr. Gör. Murat Kaya IN CLASS A 105		
14.20 -15.00	Health Assessment NRS 109 Doç.Dr.Esra Uğur LAB IN CLASS A 204		Introduction to Computers I BIL 101 Öğr. Gör. Murat Kaya IN CLASS A 105		
15.10 -15.50	Health Assessment NRS 109 Doç.Dr.Esra Uğur LAB IN CLASS A 204				
16.00 -16.40	Health Assessment NRS 109 Doç.Dr.Esra Uğur LAB IN CLASS A 204	Elective courses I	Elective courses I	Elective courses I	
16.50-17.30		Elective courses I	Elective courses I	Elective courses I	

2022-2023 FALL SEMESTER PROGRAM GUIDE

03.10.2022 MONDAY		
08:30 -09:10	Free Hour	
09:20 -10:00	NRS 101: Introduction to the Health Sciences and Nursing <ul style="list-style-type: none"> • Introduction and Importance of the Course • Department Orientation 	Assoc. Prof. Esra Uğur Res. Asst. Denizhan Yıldızbaş
10:10 -10:50	NRS 101: Introduction to the Health Sciences and Nursing <ul style="list-style-type: none"> • Introduction and Importance of the Course • Department Orientation 	Assoc. Prof. Esra Uğur Res. Asst. Denizhan Yıldızbaş
11:00 -11:40	BIL 101: Introduction to Computers <ul style="list-style-type: none"> • History of computers and information technologies 	Lect. Murat KAYA
11:50 -12:30	Free Hour	
12:30 -13:30	Lunch Break	
13:30 -14:10	NRS 109: Health Assessment <ul style="list-style-type: none"> • Introduction and Importance of the Course • Introduction to Health Assessment • The Role of the Nurse in the Health Assessment • Critical Thinking in Nursing 	Assoc. Prof. Esra Uğur Res. Asst. Denizhan Yıldızbaş Res. Asst. Dilara Sert
14:20 -15:00	NRS 109: Health Assessment <ul style="list-style-type: none"> • Introduction and Importance of the Course • Introduction to Health Assessment • The Role of the Nurse in the Health Assessment • Critical Thinking in Nursing 	Assoc. Prof. Esra Uğur Res. Asst. Denizhan Yıldızbaş Res. Asst. Dilara Sert
15:10 -15:50	NRS 109: Health Assessment <ul style="list-style-type: none"> • Introduction and Importance of the Course • Introduction to Health Assessment • The Role of the Nurse in the Health Assessment • Critical Thinking in Nursing 	Assoc. Prof. Esra Uğur Res. Asst. Denizhan Yıldızbaş Res. Asst. Dilara Sert
16:00 -16:40	NRS 109: Health Assessment <ul style="list-style-type: none"> • Introduction and Importance of the Course • Introduction to Health Assessment • The Role of the Nurse in the Health Assessment • Critical Thinking in Nursing 	Assoc. Prof. Esra Uğur Res. Asst. Denizhan Yıldızbaş Res. Asst. Dilara Sert
16:50 -17:30	Free Hour	

04.10.2022 TUESDAY		
08:30 -09:10	NRS 107: Physiology I <ul style="list-style-type: none"> • Homeostasis, bioelectric potentials 	Lect. Tülin Altınoluk
09:20 -10:00	NRS 107: Physiology I <ul style="list-style-type: none"> • Homeostasis, bioelectric potentials 	Lect. Tülin Altınoluk
10:10 -10:50	PSI 101: General Psychology <ul style="list-style-type: none"> • Introduction to the Course • Course Rules of Procedure • Psychology Science 	Clinical Psychologist Cansu Hisar
11:00 -11:40	PSI 101: General Psychology <ul style="list-style-type: none"> • Introduction to the Course • Course Rules of Procedure • Psychology Science 	Clinical Psychologist Cansu Hisar
11:50 -12:30	Free Hour	
12:30 -13:30	Lunch Break	
13:30 -14:10	Free Hour	
14:20 -15:00	Free Hour	
15:10 -15:50	Free Hour	
16:00 -16:40	Elective Courses	
16:50 -17:30	Elective Courses	

05.10.2022 WEDNESDAY		
08:30 -09:10	Free Hour	
09:20 -10:00	ENG 105: English for Academic Purposes I Introduction to the course	Dr. Nafiye Çiğdem Aktekin
10:10 -10:50	ENG 105: English for Academic Purposes I Introduction to the course	Dr. Nafiye Çiğdem Aktekin
11:00 -11:40	NRS 109: Health Assessment <ul style="list-style-type: none"> • Taking a Health History • Holistic Approach • Evaluation of cultural changes and spiritual practices 	Assoc. Prof. Esra Uğur Res. Asst. Denizhan Yıldızbaş Res. Asst. Dilara Sert
11:50 -12:30	NRS 109: Health Assessment <ul style="list-style-type: none"> • Taking a Health History • Holistic Approach • Evaluation of cultural changes and spiritual practices 	Assoc. Prof. Esra Uğur Res. Asst. Denizhan Yıldızbaş Res. Asst. Dilara Sert
12:30 -13:30	Lunch Break	
13:30 -14:10	BIL 101: Introduction to Computers •Microsoft Word App I	Lect. Murat KAYA
14:20 -15:00	BIL 101: Introduction to Computers •Microsoft Word App I	Lect. Murat KAYA
15:10 -15:50	Free Hour	
16:00 -16:40	Elective Courses	
16:50 -17:30	Elective Courses	

06.10.2022 THURSDAY		
08:30 -09:10	ATA 101: Atatürk Principles and the History of Turkish Revolution	
09:20 -10:00	ATA 101: Atatürk Principles and the History of Turkish Revolution	
10:10 -10:50	Free Hour	
11:00 -11:40	ENG 105: English for Academic Purposes I Introduction to Medical Terminology Part 1	Dr. Nafiye Çiğdem Aktekin
11:50 -12:30	ENG 105: English for Academic Purposes I Introduction to Medical Terminology Part 1	Dr. Nafiye Çiğdem Aktekin
12:30 -13:30	Lunch Break	
13:30 -14:10	Free Hour	
14:20 -15:00	Free Hour	
15:10 -15:50	Free Hour	
16:00 -16:40	Elective Courses	
16:50 -17:30	Elective Courses	

07.10.2022 FRIDAY		
08:30 -09:10	NRS 105: Anatomy I Introduction: bones, joints and muscle general considerations	Assist. Prof. Abdulveli İsmailoğlu
09:20 -10:00	NRS 105: Anatomy I Introduction: bones, joints and muscle general considerations	Assist. Prof. Abdulveli İsmailoğlu
10:10 -10:50	NRS 105: Anatomy I Introduction: bones, joints and muscle general considerations	Assist. Prof. Abdulveli İsmailoğlu
11:00 -11:40	TUR 101: Turkish Language I	
11:50 -12:30	TUR 101: Turkish Language I	
12:30 -13:30	Lunch Break	
13:30 -14:10	Free Hour	
14:20 -15:00	Free Hour	
15:10 -15:50	Free Hour	
16:00 -16:40	Free Hour	

16:50 -17:30	Free Hour	
--------------	-----------	--

10.10.2022 MONDAY		
08:30 -09:10	Free Hour	
09:20 -10:00	NRS 101: Introduction to the Health Sciences and Nursing <ul style="list-style-type: none"> Historical Development of Nursing in the World and in Turkey: From Past to Present 	Assoc. Prof. Esra Uğur Res. Asst. Denizhan Yıldızbaş
10:10 -10:50	NRS 101: Introduction to the Health Sciences and Nursing <ul style="list-style-type: none"> Historical Development of Nursing in the World and in Turkey: From Past to Present 	Assoc. Prof. Esra Uğur Res. Asst. Denizhan Yıldızbaş
11:00 -11:40	BIL 101: Introduction to Computers <ul style="list-style-type: none"> Using and understanding basic computer terminology 	Lect. Murat KAYA
11:50 -12:30	Free Hour	
12:30 -13:30	Lunch Break	
13:30 -14:10	NRS 109: Health Assessment <ul style="list-style-type: none"> Holistic Approach Evaluation of nutritional status Body weight, height, waist measurement, BMI calculation Physical Assessment 	Assoc. Prof. Esra Uğur Res. Asst. Denizhan Yıldızbaş Res. Asst. Dilara Sert
14:20 -15:00	NRS 109: Health Assessment <ul style="list-style-type: none"> Holistic Approach Evaluation of nutritional status Body weight, height, waist measurement, BMI calculation Physical Assessment 	Assoc. Prof. Esra Uğur Res. Asst. Denizhan Yıldızbaş Res. Asst. Dilara Sert
15:10 -15:50	NRS 109: Health Assessment <ul style="list-style-type: none"> Holistic Approach Evaluation of nutritional status Body weight, height, waist measurement, BMI calculation Physical Assessment 	Assoc. Prof. Esra Uğur Res. Asst. Denizhan Yıldızbaş Res. Asst. Dilara Sert
16:00 -16:40	NRS 109: Health Assessment <ul style="list-style-type: none"> Holistic Approach Evaluation of nutritional status Body weight, height, waist measurement, BMI calculation Physical Assessment 	Assoc. Prof. Esra Uğur Res. Asst. Denizhan Yıldızbaş Res. Asst. Dilara Sert
16:50 -17:30	Free Hour	

11.10.2022 TUESDAY		
08:30 -09:10	NRS 107: Physiology I <ul style="list-style-type: none"> Intercellular communication, transport of substances 	Lect. Tülin Altınoluk
09:20 -10:00	NRS 107: Physiology I Homeostasis, bioelectric potentials <ul style="list-style-type: none"> Intercellular communication, transport of substance 	Lect. Tülin Altınoluk
10:10 -10:50	PSI 101: General Psychology <ul style="list-style-type: none"> Research methods in psychology 	Clinical Psychologist Cansu Hisar
11:00 -11:40	PSI 101: General Psychology <ul style="list-style-type: none"> Research methods in psychology 	Clinical Psychologist Cansu Hisar
11:50 -12:30	Free Hour	
12:30 -13:30	Lunch Break	
13:30 -14:10	Free Hour	
14:20 -15:00	Free Hour	
15:10 -15:50	Free Hour	

16:00 -16:40	Elective Courses	
16:50 -17:30	Elective Courses	

12.10.2022 WEDNESDAY		
08:30 -09:10	Free Hour	
09:20 -10:00	ENG 105: English for Academic Purposes I Module 1: Academic Culture	Dr. Nafiye Çiğdem Aktekin
10:10 -10:50	ENG 105: English for Academic Purposes I Module 1: Academic Culture	Dr. Nafiye Çiğdem Aktekin
11:00 -11:40	NRS 109: Health Assessment • Evaluation of Vital Signs	Assoc. Prof. Esra Uğur Res. Asst. Denizhan Yıldızbaş Res. Asst. Dilara Sert
11:50 -12:30	NRS 109: Health Assessment • Evaluation of Vital Signs	Assoc. Prof. Esra Uğur Res. Asst. Denizhan Yıldızbaş Res. Asst. Dilara Sert
12:30 -13:30	Lunch Break	
13:30 -14:10	BIL 101: Introduction to Computers • Microsoft Word App II	Lect. Murat KAYA
14:20 -15:00	BIL 101: Introduction to Computers •Microsoft Word App II	Lect. Murat KAYA
15:10 -15:50	Free Hour	
16:00 -16:40	Elective Courses	
16:50 -17:30	Elective Courses	

13.10.2022 THURSDAY		
08:30 -09:10	ATA 101: Atatürk Principles and the History of Turkish Revolution	
09:20 -10:00	ATA 101: Atatürk Principles and the History of Turkish Revolution	
10:10 -10:50	Free Hour	
11:00 -11:40	ENG 105: English for Academic Purposes I Introduction to Medical Terminology Part 2	Dr. Nafiye Çiğdem Aktekin
11:50 -12:30	ENG 105: English for Academic Purposes I Introduction to Medical Terminology Part 2	Dr. Nafiye Çiğdem Aktekin
12:30 -13:30	Lunch Break	
13:30 -14:10	Free Hour	
14:20 -15:00	Free Hour	
15:10 -15:50	Free Hour	
16:00 -16:40	Elective Courses	
16:50 -17:30	Elective Courses	

14.10.2022FRIDAY		
08:30 -09:10	NRS 105: Anatomy I Bones and joints of upper extremity	Assist. Prof. Abdulveli İsmailoğlu
09:20 -10:00	NRS 105: Anatomy I Bones and joints of upper extremity	Assist. Prof. Abdulveli İsmailoğlu
10:10 -10:50	NRS 105: Anatomy I Bones and joints of upper extremity	Assist. Prof. Abdulveli İsmailoğlu
11:00 -11:40	TUR 101: Turkish Language I	
11:50 -12:30	TUR 101: Turkish Language I	
12:30 -13:30	Lunch Break	
13:30 -14:10	Free Hour	
14:20 -15:00	Free Hour	
15:10 -15:50	Free Hour	
16:00 -16:40	Free Hour	
16:50 -17:30	Free Hour	

17.10.2022 MONDAY		
08:30 -09:10	Free Hour	
09:20 -10:00	NRS 101: Introduction to the Health Sciences and Nursing <ul style="list-style-type: none"> Nursing as a Profession, the Power of Nursing Nursing Philosophy 	Assoc. Prof. Esra Uğur Res. Asst. Denizhan Yıldızbaş
10:10 -10:50	NRS 101: Introduction to the Health Sciences and Nursing <ul style="list-style-type: none"> Nursing as a Profession, the Power of Nursing Nursing Philosophy 	Assoc. Prof. Esra Uğur Res. Asst. Denizhan Yıldızbaş
11:00 -11:40	BIL 101: Introduction to Computers <ul style="list-style-type: none"> The inner world of the computer and its hardware parts 	Lect. Murat KAYA
11:50 -12:30	Free Hour	
12:30 -13:30	Lunch Break	
13:30 -14:10	NRS 109: Health Assessment <ul style="list-style-type: none"> Physical Assessment Examination positions FM methods and tools Body weight, height, waist measurement, BMI calculation 	Assoc. Prof. Esra Uğur Res. Asst. Denizhan Yıldızbaş Res. Asst. Dilara Sert
14:20 -15:00	NRS 109: Health Assessment <ul style="list-style-type: none"> Physical Assessment Examination positions FM methods and tools Body weight, height, waist measurement, BMI calculation 	Assoc. Prof. Esra Uğur Res. Asst. Denizhan Yıldızbaş Res. Asst. Dilara Sert
15:10 -15:50	NRS 109: Health Assessment <ul style="list-style-type: none"> Physical Assessment Examination positions FM methods and tools Body weight, height, waist measurement, BMI calculation 	Assoc. Prof. Esra Uğur Res. Asst. Denizhan Yıldızbaş Res. Asst. Dilara Sert
16:00 -16:40	NRS 109: Health Assessment <ul style="list-style-type: none"> Physical Assessment Examination positions FM methods and tools Body weight, height, waist measurement, BMI calculation 	Assoc. Prof. Esra Uğur Res. Asst. Denizhan Yıldızbaş Res. Asst. Dilara Sert
16:50 -17:30	Free Hour	

18.10.2022 TUESDAY		
08:30 -09:10	NRS 107: Physiology I <ul style="list-style-type: none"> Physiological properties of the skeletal muscle 	Lect. Tülin Altınoluk
09:20 -10:00	NRS 107: Physiology I Homeostasis, bioelectric potentials <ul style="list-style-type: none"> Physiological properties of the skeletal muscle 	Lect. Tülin Altınoluk
10:10 -10:50	PSI 101: General Psychology <ul style="list-style-type: none"> Sensation and perception in psychology 	Clinical Psychologist Cansu Hisar
11:00 -11:40	PSI 101: General Psychology <ul style="list-style-type: none"> Sensation and perception in psychology 	Clinical Psychologist Cansu Hisar
11:50 -12:30	Free Hour	
12:30 -13:30	Lunch Break	
13:30 -14:10	Free Hour	
14:20 -15:00	Free Hour	
15:10 -15:50	Free Hour	
16:00 -16:40	Elective Courses	
16:50 -17:30	Elective Courses	

19.10.2022 WEDNESDAY		
08:30 -09:10	Free Hour	
09:20 -10:00	ENG 105: English for Academic Purposes I Module 1: Academic Culture	Dr. Nafiye Çiğdem Aktekin
10:10 -10:50	ENG 105: English for Academic Purposes I Module 1: Academic Culture	Dr. Nafiye Çiğdem Aktekin
11:00 -11:40	NRS 109: Health Assessment <ul style="list-style-type: none"> • System Assessment-1 • Evaluation of hair, skin, lymphatic system and nail structure 	Assoc. Prof. Esra Uğur Res. Asst. Denizhan Yıldızbaş Res. Asst. Dilara Sert
11:50 -12:30	NRS 109: Health Assessment <ul style="list-style-type: none"> • System Assessment-1 • Evaluation of hair, skin, lymphatic system and nail structure 	Assoc. Prof. Esra Uğur Res. Asst. Denizhan Yıldızbaş Res. Asst. Dilara Sert
12:30 -13:30	Lunch Break	
13:30 -14:10	BIL 101: Introduction to Computers • Microsoft Word App III	Lect. Murat KAYA
14:20 -15:00	BIL 101: Introduction to Computers •Microsoft Word App III	Lect. Murat KAYA
15:10 -15:50	Free Hour	
16:00 -16:40	Elective Courses	
16:50 -17:30	Free Hour	

20.10.2022 THURSDAY		
08:30 -09:10	ATA 101: Atatürk Principles and the History of Turkish Revolution	
09:20 -10:00	ATA 101: Atatürk Principles and the History of Turkish Revolution	
10:10 -10:50	Free Hour	
11:00 -11:40	ENG 105: English for Academic Purposes I Introduction to Medical Terminology Part 3	Dr. Nafiye Çiğdem Aktekin
11:50 -12:30	ENG 105: English for Academic Purposes I Introduction to Medical Terminology Part 3	Dr. Nafiye Çiğdem Aktekin
12:30 -13:30	Lunch Break	
13:30 -14:10	Free Hour	
14:20 -15:00	Free Hour	
15:10 -15:50	Free Hour	
16:00 -16:40	Elective Courses	
16:50 -17:30	Elective Courses	

21.10.2022FRIDAY		
08:30 -09:10	NRS 105: Anatomy I Bones and joints of upper extremity	Assist. Prof. Abdulveli İsmailoğlu
09:20 -10:00	NRS 105: Anatomy I Bones and joints of upper extremity	Assist. Prof. Abdulveli İsmailoğlu
10:10 -10:50	NRS 105: Anatomy I Bones and joints of lower extremity	Assist. Prof. Abdulveli İsmailoğlu
11:00 -11:40	TUR 101: Turkish Language I	
11:50 -12:30	TUR 101: Turkish Language I	
12:30 -13:30	Lunch Break	
13:30 -14:10	Free Hour	
14:20 -15:00	Free Hour	
15:10 -15:50	Free Hour	
16:00 -16:40	Free Hour	
16:50 -17:30	Free Hour	

24.10.2022 MONDAY		
08:30 -09:10	Free Hour	
09:20 -10:00	NRS 101: Introduction to the Health Sciences and Nursing <ul style="list-style-type: none"> Nursing Education and Career Planning in Turkey and in the World 	Assoc. Prof. Esra Uğur Res. Asst. Denizhan Yıldızbaş
10:10 -10:50	NRS 101: Introduction to the Health Sciences and Nursing <ul style="list-style-type: none"> Nursing Education and Career Planning in Turkey and in the World 	Assoc. Prof. Esra Uğur Res. Asst. Denizhan Yıldızbaş
11:00 -11:40	BIL 101: Introduction to Computers General information about input, output and storage in the computer	Lect. Murat KAYA
11:50 -12:30	Free Hour	
12:30 -13:30	Lunch Break	
13:30 -14:10	NRS 109: Health Assessment <ul style="list-style-type: none"> Evaluation of Vital Signs Body temperature Pulse breathing Evaluation of Blood Pressure Assessment of pain 	Assoc. Prof. Esra Uğur Res. Asst. Denizhan Yıldızbaş Res. Asst. Dilara Sert
14:20 -15:00	NRS 109: Health Assessment <ul style="list-style-type: none"> Evaluation of Vital Signs Body temperature Pulse Breathing Evaluation of Blood Pressure Assessment of pain 	Assoc. Prof. Esra Uğur Res. Asst. Denizhan Yıldızbaş Res. Asst. Dilara Sert
15:10 -15:50	NRS 109: Health Assessment <ul style="list-style-type: none"> Evaluation of Vital Signs Body temperature Pulse Breathing Evaluation of Blood Pressur Assessment of pain 	Assoc. Prof. Esra Uğur Res. Asst. Denizhan Yıldızbaş Res. Asst. Dilara Sert
16:00 -16:40	NRS 109: Health Assessment <ul style="list-style-type: none"> Evaluation of Vital Signs Body temperature Pulse breathing Evaluation of Blood Pressure Assessment of pain 	Assoc. Prof. Esra Uğur Res. Asst. Denizhan Yıldızbaş Res. Asst. Dilara Sert
16:50 -17:30	Free Hour	

25.10.2022 TUESDAY		
08:30 -09:10	NRS 107: Physiology I <ul style="list-style-type: none"> Neuromuscular transmission of the skeletal muscle, smooth muscle physiology 	Lect. Tülin Altınoluk
09:20 -10:00	NRS 107: Physiology I <ul style="list-style-type: none"> Neuromuscular transmission of the skeletal muscle, smooth muscle physiology 	Lect. Tülin Altınoluk
10:10 -10:50	PSI 101: General Psychology <ul style="list-style-type: none"> Learning Psychology 1 	Clinical Psychologist Cansu Hisar
11:00 -11:40	PSI 101: General Psychology <ul style="list-style-type: none"> Learning Psychology 1 	Clinical Psychologist Cansu Hisar
11:50 -12:30	Free Hour	
12:30 -13:30	Lunch Break	

13:30 -14:10	Free Hour	
14:20 -15:00	Free Hour	
15:10 -15:50	Free Hour	
16:00 -16:40	Elective Courses	
16:50 -17:30	Elective Courses	

26.10.2022 WEDNESDAY		
08:30 -09:10	Free Hour	
09:20 -10:00	ENG 105: English for Academic Purposes I Module 1: Academic Culture	Dr. Nafiye Çiğdem Aktekin
10:10 -10:50	ENG 105: English for Academic Purposes I Module 1: Academic Culture	Dr. Nafiye Çiğdem Aktekin
11:00 -11:40	NRS 109: Health Assessment <ul style="list-style-type: none"> • System Assessment-2 • Evaluation of the head, neck, throat, sinuses and eyes • Evaluation of the breast and axilla, breast self-examination 	Assoc. Prof. Esra Uğur Res. Asst. Denizhan Yıldızbaş Res. Asst. Dilara Sert
11:50 -12:30	NRS 109: Health Assessment <ul style="list-style-type: none"> • System Assessment-2 • Evaluation of the head, neck, throat, sinuses and eyes • Evaluation of the breast and axilla, breast self-examination 	Assoc. Prof. Esra Uğur Res. Asst. Denizhan Yıldızbaş Res. Asst. Dilara Sert
12:30 -13:30	Lunch Break	
13:30 -14:10	BIL 101: Introduction to Computers • Microsoft Word App IV	Lect. Murat KAYA
14:20 -15:00	BIL 101: Introduction to Computers •Microsoft Word App IV	Lect. Murat KAYA
15:10 -15:50	Free Hour	
16:00 -16:40	Elective Courses	
16:50 -17:30	Free Hour	

27.10.2022 THURSDAY		
08:30 -09:10	ATA 101: Atatürk Principles and the History of Turkish Revolution	
09:20 -10:00	ATA 101: Atatürk Principles and the History of Turkish Revolution	
10:10 -10:50	Free Hour	
11:00 -11:40	ENG 105: English for Academic Purposes I Introduction to Medical Terminology Part 4	Dr. Nafiye Çiğdem Aktekin
11:50 -12:30	ENG 105: English for Academic Purposes I Introduction to Medical Terminology Part 4	Dr. Nafiye Çiğdem Aktekin
12:30 -13:30	Lunch Break	
13:30 -14:10	Free Hour	
14:20 -15:00	Free Hour	
15:10 -15:50	Free Hour	
16:00 -16:40	Elective Courses	
16:50 -17:30	Elective Courses	

28.10.2022FRIDAY		
08:30 -09:10	NRS 105: Anatomy I <ul style="list-style-type: none"> • Cranium, vertebral column, ribs and sternum. Joints of thoracic wall and vertebral column 	Assist. Prof. Abdulveli İsmailoğlu
09:20 -10:00	NRS 105: Anatomy I <ul style="list-style-type: none"> • Cranium, vertebral column, ribs and sternum. Joints of thoracic wall and vertebral column 	Assist. Prof. Abdulveli İsmailoğlu
10:10 -10:50	NRS 105: Anatomy I <ul style="list-style-type: none"> • Cranium, vertebral column, ribs and sternum. Joints of thoracic wall and vertebral column 	Assist. Prof. Abdulveli İsmailoğlu
11:00 -11:40	TUR 101: Turkish Language I	

11:50 -12:30	TUR 101: Turkish Language I	
12:30 -13:30	Lunch Break	
13:30 -14:10	Free Hour	
14:20 -15:00	Free Hour	
15:10 -15:50	Free Hour	
16:00 -16:40	Free Hour	
16:50 -17:30	Free Hour	

31.10.2022 MONDAY		
08:30 -09:10	Free Hour	
09:20 -10:00	NRS 101: Introduction to the Health Sciences and Nursing -National and International Nursing Organizations -Laws and Regulations - Job Description of Nursing	Assoc. Prof. Esra Uğur Res. Asst. Denizhan Yıldızbaş
10:10 -10:50	NRS 101: Introduction to the Health Sciences and Nursing -National and International Nursing Organizations -Laws and Regulations - Job Description of Nursing	Assoc. Prof. Esra Uğur Res. Asst. Denizhan Yıldızbaş
11:00 -11:40	BIL 101: Introduction to Computers • System Software	Lect. Murat KAYA
11:50 -12:30	Free Hour	
12:30 -13:30	Lunch Break	
13:30 -14:10	NRS 109: Health Assessment • System Assessment • -Evaluation of the head, neck, throat, sinuses and eyes • -Evaluation of the breast and axilla	Assoc. Prof. Esra Uğur Res. Asst. Denizhan Yıldızbaş Res. Asst. Dilara Sert
14:20 -15:00	NRS 109: Health Assessment • System Assessment • -Evaluation of the head, neck, throat, sinuses and eyes • -Evaluation of the breast and axilla	Assoc. Prof. Esra Uğur Res. Asst. Denizhan Yıldızbaş Res. Asst. Dilara Sert
15:10 -15:50	NRS 109: Health Assessment • System Assessment • -Evaluation of the head, neck, throat, sinuses and eyes • -Evaluation of the breast and axilla	Assoc. Prof. Esra Uğur Res. Asst. Denizhan Yıldızbaş Res. Asst. Dilara Sert
16:00 -16:40	NRS 109: Health Assessment • System Assessment • -Evaluation of the head, neck, throat, sinuses and eyes • -Evaluation of the breast and axilla	Assoc. Prof. Esra Uğur Res. Asst. Denizhan Yıldızbaş Res. Asst. Dilara Sert
16:50 -17:30	Free Hour	

01.11.2022 TUESDAY		
08:30 -09:10	NRS 107: Physiology I Synapses and neuronal integration, neurotransmitters, sensory perception, physiology of pain	Lect. Tülin Altınoluk
09:20 -10:00	NRS 107: Physiology I Synapses and neuronal integration, neurotransmitters, sensory perception, physiology of pain	Lect. Tülin Altınoluk
10:10 -10:50	PSI 101: General Psychology Learning Psychology 2	Clinical Psychologist Cansu Hisar
11:00 -11:40	PSI 101: General Psychology Learning Psychology 2	Clinical Psychologist Cansu Hisar
11:50 -12:30	Free Hour	
12:30 -13:30	Lunch Break	

13:30 -14:10	Free Hour	
14:20 -15:00	Free Hour	
15:10 -15:50	Free Hour	
16:00 -16:40	Elective Courses	
16:50 -17:30	Elective Courses	

02.11.2022 WEDNESDAY		
08:30 -09:10	Free Hour	
09:20 -10:00	ENG 105: English for Academic Purposes I Module 1: Academic Culture	Dr. Nafiye Çiğdem Aktekin
10:10 -10:50	ENG 105: English for Academic Purposes I Module 1: Academic Culture	Dr. Nafiye Çiğdem Aktekin
11:00 -11:40	NRS 109: Health Assessment <ul style="list-style-type: none"> • System Assessment-3 • -Assessment of the respiratory system 	Assoc. Prof. Esra Uğur Res. Asst. Denizhan Yıldızbaş Res. Asst. Dilara Sert
11:50 -12:30	NRS 109: Health Assessment <ul style="list-style-type: none"> • System Assessment-3 • -Assessment of the respiratory system 	Assoc. Prof. Esra Uğur Res. Asst. Denizhan Yıldızbaş Res. Asst. Dilara Sert
12:30 -13:30	Lunch Break	
13:30 -14:10	BIL 101: Introduction to Computers <ul style="list-style-type: none"> • Microsoft Excel I 	Lect. Murat KAYA
14:20 -15:00	BIL 101: Introduction to Computers <ul style="list-style-type: none"> •Microsoft Excel I 	Lect. Murat KAYA
15:10 -15:50	Free Hour	
16:00 -16:40	Elective Courses	
16:50 -17:30	NRS 105: Anatomy I Quiz 1	Assist. Prof. Abdulveli İsmailoğlu

03.11.2022 THURSDAY		
08:30 -09:10	ATA 101: Atatürk Principles and the History of Turkish Revolution	
09:20 -10:00	ATA 101: Atatürk Principles and the History of Turkish Revolution	
10:10 -10:50	Free Hour	
11:00 -11:40	ENG 105: English for Academic Purposes I Introduction to Medical Terminology Part 5	Dr. Nafiye Çiğdem Aktekin
11:50 -12:30	ENG 105: English for Academic Purposes I Introduction to Medical Terminology Part 5	Dr. Nafiye Çiğdem Aktekin
12:30 -13:30	Lunch Break	
13:30 -14:10	Free Hour	
14:20 -15:00	Free Hour	
15:10 -15:50	Free Hour	
16:00 -16:40	Elective Courses	
16:50 -17:30	Elective Courses	

04.11.2022 FRIDAY		
08:30 -09:10	NRS 105: Anatomy I Discussion (Quiz)	Assist. Prof. Abdulveli İsmailoğlu
09:20 -10:00	NRS 105: Anatomy I Discussion (Quiz)	Assist. Prof. Abdulveli İsmailoğlu
10:10 -10:50	NRS 105: Anatomy I Revision	Assist. Prof. Abdulveli İsmailoğlu
11:00 -11:40	TUR 101: Turkish Language I	
11:50 -12:30	TUR 101: Turkish Language I	
12:30 -13:30	Lunch Break	
13:30 -14:10	Free Hour	
14:20 -15:00	Free Hour	
15:10 -15:50	Free Hour	
16:00 -16:40	Free Hour	
16:50 -17:30	Free Hour	

07.11.2022 MONDAY		
08:30 -09:10	Free Hour	
09:20 -10:00	NRS 101: Introduction to the Health Sciences and Nursing - Basic Concepts-1 - Human-Environment Concept	Assoc. Prof. Esra Uğur Res. Asst. Denizhan Yıldızbaş
10:10 -10:50	NRS 101: Introduction to the Health Sciences and Nursing - Basic Concepts-1 - Human-Environment Concept	Assoc. Prof. Esra Uğur Res. Asst. Denizhan Yıldızbaş
11:00 -11:40	BIL 101: Introduction to Computers - Internet research, e-commerce, education, etc. for efficient search and use.	Lect. Murat KAYA
11:50 -12:30	Free Hour	
12:30 -13:30	Lunch Break	
13:30 -14:10	NRS 109: Health Assessment -System Assessment -Evaluation of the head, neck, throat, sinuses and eyes -Evaluation of the breast and axilla	Assoc. Prof. Esra Uğur Res. Asst. Denizhan Yıldızbaş Res. Asst. Dilara Sert
14:20 -15:00	NRS 109: Health Assessment -System Assessment -Evaluation of the head, neck, throat, sinuses and eyes -Evaluation of the breast and axilla	Assoc. Prof. Esra Uğur Res. Asst. Denizhan Yıldızbaş Res. Asst. Dilara Sert
15:10 -15:50	NRS 109: Health Assessment -System Assessment -Evaluation of the head, neck, throat, sinuses and eyes -Evaluation of the breast and axilla	Assoc. Prof. Esra Uğur Res. Asst. Denizhan Yıldızbaş Res. Asst. Dilara Sert
16:00 -16:40	NRS 109: Health Assessment -System Assessment -Evaluation of the head, neck, throat, sinuses and eyes -Evaluation of the breast and axilla	Assoc. Prof. Esra Uğur Res. Asst. Denizhan Yıldızbaş Res. Asst. Dilara Sert
16:50 -17:30	Free Hour	

8.11.2022 TUESDAY		
08:30 -09:10	NRS 107: Physiology I Organization of the cortex, motor cortex and corticospinal system, cerebellum, basal nuclei, vestibular system	Lect. Tülin Altınoluk
09:20 -10:00	NRS 107: Physiology I Organization of the cortex, motor cortex and corticospinal system, cerebellum, basal nuclei, vestibular system	Lect. Tülin Altınoluk
10:10 -10:50	PSI 101: General Psychology Cognition: Thinking and Problem Solving	Clinical Psychologist Cansu Hisar
11:00 -11:40	PSI 101: General Psychology Cognition: Thinking and Problem Solving	Clinical Psychologist Cansu Hisar
11:50 -12:30	Free Hour	
12:30 -13:30	Lunch Break	
13:30 -14:10	Free Hour	
14:20 -15:00	Free Hour	
15:10 -15:50	Free Hour	
16:00 -16:40	Elective Courses	
16:50 -17:30	Elective Courses	

9.11.2022 WEDNESDAY		
08:30 -09:10	Free Hour	
09:20 -10:00	ENG 105: English for Academic Purposes I Medical Terminology Midterm	Dr. Nafiye Çiğdem Aktekin
10:10 -10:50	ENG 105: English for Academic Purposes I Medical Terminology Midterm	Dr. Nafiye Çiğdem Aktekin

11:00 -11:40	NRS 109: Health Assessment <ul style="list-style-type: none"> • System Assessment-4 • - Evaluation of the circulatory system 	Assoc. Prof. Esra Uğur Res. Asst. Denizhan Yıldızbaş Res. Asst. Dilara Sert
11:50 -12:30	NRS 109: Health Assessment <ul style="list-style-type: none"> • System Assessment-4 • - Evaluation of the circulatory system 	Assoc. Prof. Esra Uğur Res. Asst. Denizhan Yıldızbaş Res. Asst. Dilara Sert
12:30 -13:30	Lunch Break	
13:30 -14:10	BIL 101: Introduction to Computers <ul style="list-style-type: none"> • Microsoft Excel I 	Lect. Murat KAYA
14:20 -15:00	BIL 101: Introduction to Computers <ul style="list-style-type: none"> •Microsoft Excel I 	Lect. Murat KAYA
15:10 -15:50	Free Hour	
16:00 -16:40	Elective Courses	
16:50 -17:30	NRS 105: Anatomy I Quiz 1	Assist. Prof. Abdulveli İsmailoğlu

10.11.2022 THURSDAY		
08:30 -09:10	ATA 101: Atatürk Principles and the History of Turkish Revolution	
09:20 -10:00	ATA 101: Atatürk Principles and the History of Turkish Revolution	
10:10 -10:50	Free Hour	
11:00 -11:40	ENG 105: English for Academic Purposes I Study Time	Dr. Nafiye Çiğdem Aktekin
11:50 -12:30	ENG 105: English for Academic Purposes I Study Time	Dr. Nafiye Çiğdem Aktekin
12:30 -13:30	Lunch Break	
13:30 -14:10	Free Hour	
14:20 -15:00	Free Hour	
15:10 -15:50	Free Hour	
16:00 -16:40	Elective Courses	
16:50 -17:30	Elective Courses	

11.11.2022FRIDAY		
08:30 -09:10	NRS 105: Anatomy I Superficial back and upper extremity muscles. Vessels and Nerves of Upper extremity, Spinal nerve overview and brachial plexus	Assist. Prof. Abdulveli İsmailoğlu
09:20 -10:00	NRS 105: Anatomy I Superficial back and upper extremity muscles. Vessels and Nerves of Upper extremity, Spinal nerve overview and brachial plexus	Assist. Prof. Abdulveli İsmailoğlu
10:10 -10:50	NRS 105: Anatomy I Superficial back and upper extremity muscles. Vessels and Nerves of Upper extremity, Spinal nerve overview and brachial plexus	Assist. Prof. Abdulveli İsmailoğlu
11:00 -11:40	TUR 101: Turkish Language I	
11:50 -12:30	TUR 101: Turkish Language I	
12:30 -13:30	Lunch Break	
13:30 -14:10	Free Hour	
14:20 -15:00	Free Hour	
15:10 -15:50	Free Hour	
16:00 -16:40	Free Hour	
16:50 -17:30	Free Hour	

14.11.2022 MONDAY		
08:30 -09:10	Free Hour	
09:20 -10:00	NRS 101: Introduction to the Health Sciences and Nursing MIDTERM	Assoc. Prof. Esra Uğur Res. Asst. Denizhan Yıldızbaş

10:10 -10:50	NRS 101: Introduction to the Health Sciences and Nursing MIDTERM	Assoc. Prof. Esra Uğur Res. Asst. Denizhan Yıldızbaş
11:00 -11:40	BIL 101: Introduction to Computers - Understanding the criteria for purchasing a computer based on its intended use (hardware, operating system, and application software)	Lect. Murat KAYA
11:50 -12:30	Free Hour	
12:30 -13:30	Lunch Break	
13:30 -14:10	NRS 109: Health Assessment - System Assessment - Evaluation of the respiratory system -Evaluation of the circulatory system	Assoc. Prof. Esra Uğur Res. Asst. Denizhan Yıldızbaş Res. Asst. Dilara Sert
14:20 -15:00	NRS 109: Health Assessment -System Assessment - Evaluation of the respiratory system -Evaluation of the circulatory system	Assoc. Prof. Esra Uğur Res. Asst. Denizhan Yıldızbaş Res. Asst. Dilara Sert
15:10 -15:50	NRS 109: Health Assessment -System Assessment - Evaluation of the respiratory system -Evaluation of the circulatory system	Assoc. Prof. Esra Uğur Res. Asst. Denizhan Yıldızbaş Res. Asst. Dilara Sert
16:00 -16:40	NRS 109: Health Assessment -System Assessment - Evaluation of the respiratory system -Evaluation of the circulatory system	Assoc. Prof. Esra Uğur Res. Asst. Denizhan Yıldızbaş Res. Asst. Dilara Sert
16:50 -17:30	Free Hour	

15.11.2022 TUESDAY		
08:30 -09:10	NRS 107: Physiology I Autonomic nervous system, the limbic system	Lect. Tülin Altınoluk
09:20 -10:00	NRS 107: Physiology I Autonomic nervous system, the limbic system	Lect. Tülin Altınoluk
10:10 -10:50	PSI 101: General Psychology Lifetime Development : Cognitive, Sensory	Clinical Psychologist Cansu Hisar
11:00 -11:40	PSI 101: General Psychology Lifetime Development : Cognitive, Sensory	Clinical Psychologist Cansu Hisar
11:50 -12:30	Free Hour	
12:30 -13:30	Lunch Break	
13:30 -14:10	Free Hour	
14:20 -15:00	Free Hour	
15:10 -15:50	Free Hour	
16:00 -16:40	Elective Courses	
16:50 -17:30	Elective Courses	

16.11.2022 WEDNESDAY		
08:30 -09:10	Free Hour	
09:20 -10:00	ENG 105: English for Academic Purposes I Module 2: Group Work & Projects	Dr. Nafiye Çiğdem Aktekin
10:10 -10:50	ENG 105: English for Academic Purposes I Module 2: Group Work & Projects	Dr. Nafiye Çiğdem Aktekin
11:00 -11:40	NRS 109: Health Assessment MIDTERM	Assoc. Prof. Esra Uğur Res. Asst. Denizhan Yıldızbaş Res. Asst. Dilara Sert
11:50 -12:30	NRS 109: Health Assessment MIDTERM	Assoc. Prof. Esra Uğur Res. Asst. Denizhan Yıldızbaş Res. Asst. Dilara Sert
12:30 -13:30	Lunch Break	
13:30 -14:10	BIL 101: Introduction to Computers • Microsoft Excel II	Lect. Murat KAYA
14:20 -15:00	BIL 101: Introduction to Computers	Lect. Murat KAYA

	•Microsoft Excel II	
15:10 -15:50	Free Hour	
16:00 -16:40	Elective Courses	
16:50 -17:30	Elective Courses	

17.11.2022 THURSDAY		
08:30 -09:10	ATA 101: Atatürk Principles and the History of Turkish Revolution	
09:20 -10:00	ATA 101: Atatürk Principles and the History of Turkish Revolution	
10:10 -10:50	Free Hour	
11:00 -11:40	ENG 105: English for Academic Purposes I Body Organization Part 1	Dr. Nafiye Çiğdem Aktekin
11:50 -12:30	ENG 105: English for Academic Purposes I Body Organization Part 1	Dr. Nafiye Çiğdem Aktekin
12:30 -13:30	Lunch Break	
13:30 -14:10	Free Hour	
14:20 -15:00	Free Hour	
15:10 -15:50	Free Hour	
16:00 -16:40	Elective Courses	
16:50 -17:30	Elective Courses	

18.11.2022 FRIDAY		
08:30 -09:10	NRS 105: Anatomy I Midterm Examination	Assist. Prof. Abdulveli İsmailoğlu
09:20 -10:00	NRS 105: Anatomy I Midterm Examination	Assist. Prof. Abdulveli İsmailoğlu
10:10 -10:50	NRS 105: Anatomy I Midterm Examination	Assist. Prof. Abdulveli İsmailoğlu
11:00 -11:40	TUR 101: Turkish Language I	
11:50 -12:30	TUR 101: Turkish Language I	
12:30 -13:30	Lunch Break	
13:30 -14:10	Free Hour	
14:20 -15:00	Free Hour	
15:10 -15:50	Free Hour	
16:00 -16:40	Free Hour	
16:50 -17:30	Free Hour	

21.11.2022 MONDAY		
08:30 - 09:10	Free Hour	
09:20 - 10:00	NRS 101: Introduction to the Health Sciences and Nursing Basic Concepts-2 Nurse-Health/Illness Concept	Assoc. Prof. Esra Uğur Res. Asst. Denizhan Yıldızbaş
10:10 - 10:50	NRS 101: Introduction to the Health Sciences and Nursing Basic Concepts-2 Nurse-Health/Illness Concept	Assoc. Prof. Esra Uğur Res. Asst. Denizhan Yıldızbaş
11:00 - 11:40	BIL 101: Introduction to Computers - MIDTERM EXAMS	Lect. Murat KAYA
11:50 - 12:30	Free Hour	
12:30 - 13:30	Lunch Break	
13:30 - 14:10	NRS 109: Health Assessment - System Assessment - Evaluation of the respiratory system - Evaluation of the circulatory system	Assoc. Prof. Esra Uğur Res. Asst. Denizhan Yıldızbaş Res. Asst. Dilara Sert
14:20 - 15:00	NRS 109: Health Assessment	Assoc. Prof. Esra Uğur Res. Asst. Denizhan Yıldızbaş Res. Asst. Dilara Sert

	- System Assessment - Evaluation of the respiratory system -Evaluation of the circulatory system	
15:10 - 15:50	NRS 109: Health Assessment -System Assessment - Evaluation of the respiratory system -Evaluation of the circulatory system	Assoc. Prof. Esra Uğur Res. Asst. Denizhan Yıldızbaş Res. Asst. Dilara Sert
16:00 - 16:40	NRS 109: Health Assessment -System Assessment - Evaluation of the respiratory system -Evaluation of the circulatory system	Assoc. Prof. Esra Uğur Res. Asst. Denizhan Yıldızbaş Res. Asst. Dilara Sert
16:50 - 17:30	Free Hour	

22.11.2022 TUESDAY		
08:30 -09:10	NRS 107: Physiology I MIDTERM EXAMS	Lect. Tülin Altınoluk
09:20 -10:00	NRS 107: Physiology I MIDTERM EXAMS	Lect. Tülin Altınoluk
10:10 -10:50	PSI 101: General Psychology MIDTERM EXAMS	Clinical Psychologist Cansu Hisar
11:00 -11:40	PSI 101: General Psychology MIDTERM EXAMS	Clinical Psychologist Cansu Hisar
11:50 -12:30	Free Hour	
12:30 -13:30	Lunch Break	
13:30 -14:10	Free Hour	
14:20 -15:00	Free Hour	
15:10 -15:50	Free Hour	
16:00 -16:40	Elective Courses	
16:50 -17:30	Elective Courses	

23.11.2022 WEDNESDAY		
08:30 -09:10	Free Hour	
09:20 -10:00	ENG 105: English for Academic Purposes I Module 2: Group Work & Projects	Dr. Nafiye Çiğdem Aktekin
10:10 -10:50	ENG 105: English for Academic Purposes I Module 2: Group Work & Projects	Dr. Nafiye Çiğdem Aktekin
11:00 -11:40	NRS 109: Health Assessment -System Assessment-5 - Evaluation of the abdomen	Assoc. Prof. Esra Uğur Res. Asst. Denizhan Yıldızbaş Res. Asst. Dilara Sert
11:50 -12:30	NRS 109: Health Assessment - System Assessment-5 - Evaluation of the abdomen	Assoc. Prof. Esra Uğur Res. Asst. Denizhan Yıldızbaş Res. Asst. Dilara Sert
12:30 -13:30	Lunch Break	
13:30 -14:10	BIL 101: Introduction to Computers • Microsoft Excel III	Lect. Murat KAYA
14:20 -15:00	BIL 101: Introduction to Computers •Microsoft Excel III	Lect. Murat KAYA
15:10 -15:50	Free Hour	
16:00 -16:40	Elective Courses	
16:50 -17:30	Elective Courses	

24.11.2022 THURSDAY		
08:30 -09:10	ATA 101: Atatürk Principles and the History of Turkish Revolution	
09:20 -10:00	ATA 101: Atatürk Principles and the History of Turkish Revolution	
10:10 -10:50	Free Hour	
11:00 -11:40	ENG 105: English for Academic Purposes I Body Organization Part 2	Dr. Nafiye Çiğdem Aktekin
11:50 -12:30	ENG 105: English for Academic Purposes I Body Organization Part 2	Dr. Nafiye Çiğdem Aktekin

12:30 -13:30	Lunch Break	
13:30 -14:10	Free Hour	
14:20 -15:00	Free Hour	
15:10 -15:50	Free Hour	
16:00 -16:40	Elective Courses	
16:50 -17:30	Elective Courses	

25.11.2022FRIDAY		
08:30 -09:10	NRS 105: Anatomy I Vessels and nerves of lower extremity and lumbosacral plexus	Assist. Prof. Abdulveli İsmailoğlu
09:20 -10:00	NRS 105: Anatomy I Vessels and nerves of lower extremity and lumbosacral plexus	Assist. Prof. Abdulveli İsmailoğlu
10:10 -10:50	NRS 105: Anatomy I Vessels and nerves of lower extremity and lumbosacral plexus	Assist. Prof. Abdulveli İsmailoğlu
11:00 -11:40	TUR 101: Turkish Language I	
11:50 -12:30	TUR 101: Turkish Language I	
12:30 -13:30	Lunch Break	
13:30 -14:10	Free Hour	
14:20 -15:00	Free Hour	
15:10 -15:50	Free Hour	
16:00 -16:40	Free Hour	
16:50 -17:30	Free Hour	

28.11.2022 MONDAY		
08:30 -09:10	Free Hour	
09:20 -10:00	NRS 101: Introduction to the Health Sciences and Nursing Basic Concepts-3 Care concept	Assoc. Prof. Esra Uğur Res. Asst. Denizhan Yıldızbaş
10:10 -10:50	NRS 101: Introduction to the Health Sciences and Nursing Basic Concepts-3 Care concept	Assoc. Prof. Esra Uğur Res. Asst. Denizhan Yıldızbaş
11:00 -11:40	BIL 101: Introduction to Computers - The Internet & www	Lect. Murat KAYA
11:50 -12:30	Free Hour	
12:30 -13:30	Lunch Break	
13:30 -14:10	NRS 109: Health Assessment System Assessment-6 - Evaluation of the urinary system - Evaluation of excretion System Assessment-7 -Evaluation of the musculoskeletal system -Assessment of movement and balance	Assoc. Prof. Esra Uğur Res. Asst. Denizhan Yıldızbaş Res. Asst. Dilara Sert
14:20 -15:00	NRS 109: Health Assessment System Assessment-6 - Evaluation of the urinary system - Evaluation of excretion System Assessment-7 -Evaluation of the musculoskeletal system -Assessment of movement and balance	Assoc. Prof. Esra Uğur Res. Asst. Denizhan Yıldızbaş Res. Asst. Dilara Sert
15:10 -15:50	NRS 109: Health Assessment	Assoc. Prof. Esra Uğur Res. Asst. Denizhan Yıldızbaş Res. Asst. Dilara Sert

	- System Assessment-6 - Evaluation of the urinary system - Evaluation of excretion System Assessment-7 -Evaluation of the musculoskeletal system -Assessment of movement and balance	
16:00 -16:40	NRS 109: Health Assessment System Assessment-6 - Evaluation of the urinary system - Evaluation of excretion System Assessment-7 -Evaluation of the musculoskeletal system -Assessment of movement and balance	Assoc. Prof. Esra Uğur Res. Asst. Denizhan Yıldızbaş Res. Asst. Dilara Sert
16:50 -17:30	Free Hour	

29.11.2022 TUESDAY		
08:30 -09:10	NRS 107: Physiology I Functions of the hypothalamus and pituitary	Lect. Tülin Altınoluk
09:20 -10:00	NRS 107: Physiology I Functions of the hypothalamus and pituitary	Lect. Tülin Altınoluk
10:10 -10:50	PSI 101: General Psychology Lifelong Development: Psychosocial, physical development	Clinical Psychologist Cansu Hisar
11:00 -11:40	PSI 101: General Psychology Lifelong Development: Psychosocial, physical development	Clinical Psychologist Cansu Hisar
11:50 -12:30	Free Hour	
12:30 -13:30	Lunch Break	
13:30 -14:10	Free Hour	
14:20 -15:00	Free Hour	
15:10 -15:50	Free Hour	
16:00 -16:40	Elective Courses	
16:50 -17:30	Elective Courses	

30.11.2022 WEDNESDAY		
08:30 -09:10	Free Hour	
09:20 -10:00	ENG 105: English for Academic Purposes I Module 2: Group Work & Projects	Dr. Nafiye Çiğdem Aktekin
10:10 -10:50	ENG 105: English for Academic Purposes I Module 2: Group Work & Projects	Dr. Nafiye Çiğdem Aktekin
11:00 -11:40	NRS 109: Health Assessment System Assessment-8 -Evaluation of the neurological system	Assoc. Prof. Esra Uğur Res. Asst. Denizhan Yıldızbaş Res. Asst. Dilara Sert
11:50 -12:30	NRS 109: Health Assessment System Assessment-8 -Evaluation of the neurological system	Assoc. Prof. Esra Uğur Res. Asst. Denizhan Yıldızbaş Res. Asst. Dilara Sert
12:30 -13:30	Lunch Break	
13:30 -14:10	BIL 101: Introduction to Computers • Microsoft Power Point App I	Lect. Murat KAYA
14:20 -15:00	BIL 101: Introduction to Computers • Microsoft Power Point App I	Lect. Murat KAYA
15:10 -15:50	Free Hour	
16:00 -16:40	Elective Courses	
16:50 -17:30	Elective Courses	

01.12.2022 THURSDAY		
08:30 -09:10	ATA 101: Atatürk Principles and the History of Turkish Revolution	
09:20 -10:00	ATA 101: Atatürk Principles and the History of Turkish Revolution	

10:10 -10:50	Free Hour	
11:00 -11:40	ENG 105: English for Academic Purposes I Body Organization Part 3	Dr. Nafiye Çiğdem Aktekin
11:50 -12:30	ENG 105: English for Academic Purposes I Body Organization Part 3	Dr. Nafiye Çiğdem Aktekin
12:30 -13:30	Lunch Break	
13:30 -14:10	Free Hour	
14:20 -15:00	Free Hour	
15:10 -15:50	Free Hour	
16:00 -16:40	Elective Courses	
16:50 -17:30	Elective Courses	

02.12.2022FRIDAY		
08:30 -09:10	NRS 105: Anatomy I Anterior abdominal wall topography, muscles and fascias, inguinal canal	Assist. Prof. Abdulveli İsmailoğlu
09:20 -10:00	NRS 105: Anatomy I Anterior abdominal wall topography, muscles and fascias, inguinal canal	Assist. Prof. Abdulveli İsmailoğlu
10:10 -10:50	NRS 105: Anatomy I Anterior abdominal wall topography, muscles and fascias, inguinal canal	Assist. Prof. Abdulveli İsmailoğlu
11:00 -11:40	TUR 101: Turkish Language I	
11:50 -12:30	TUR 101: Turkish Language I	
12:30 -13:30	Lunch Break	
13:30 -14:10	Free Hour	
14:20 -15:00	Free Hour	
15:10 -15:50	Free Hour	
16:00 -16:40	Free Hour	
16:50 -17:30	Free Hour	

05.12.2022 MONDAY		
08:30 -09:10	Free Hour	
09:20 -10:00	NRS 101: Introduction to the Health Sciences and Nursing Models and Theories in Nursing	Assoc. Prof. Esra Uğur Res. Asst. Denizhan Yıldızbaş
10:10 -10:50	NRS 101: Introduction to the Health Sciences and Nursing Models and Theories in Nursing	Assoc. Prof. Esra Uğur Res. Asst. Denizhan Yıldızbaş
11:00 -11:40	BIL 101: Introduction to Computers - Application Software	Lect. Murat KAYA
11:50 -12:30	Free Hour	
12:30 -13:30	Lunch Break	
13:30 -14:10	NRS 109: Health Assessment System Assessment -Abdominal examination -Evaluation of the musculoskeletal system -Evaluation of the neurological system	Assoc. Prof. Esra Uğur Res. Asst. Denizhan Yıldızbaş Res. Asst. Dilara Sert
14:20 -15:00	NRS 109: Health Assessment System Assessment -Abdominal examination -Evaluation of the musculoskeletal system -Evaluation of the neurological system	Assoc. Prof. Esra Uğur Res. Asst. Denizhan Yıldızbaş Res. Asst. Dilara Sert
15:10 -15:50	NRS 109: Health Assessment System Assessment -Abdominal examination -Evaluation of the musculoskeletal system -Evaluation of the neurological system	Assoc. Prof. Esra Uğur Res. Asst. Denizhan Yıldızbaş Res. Asst. Dilara Sert

16:00 -16:40	NRS 109: Health Assessment System Assessment -Abdominal examination -Evaluation of the musculoskeletal system -Evaluation of the neurological system	Assoc. Prof. Esra Uğur Res. Asst. Denizhan Yıldızbaş Res. Asst. Dilara Sert
16:50 -17:30	Free Hour	

06.12.2022 TUESDAY		
08:30 -09:10	NRS 107: Physiology I Composition and function of blood	Lect. Tülin Altınoluk
09:20 -10:00	NRS 107: Physiology I Composition and function of blood	Lect. Tülin Altınoluk
10:10 -10:50	PSI 101: General Psychology Motivation, Stress and Emotion1	Clinical Psychologist Cansu Hisar
11:00 -11:40	PSI 101: General Psychology Motivation, Stress and Emotion1	Clinical Psychologist Cansu Hisar
11:50 -12:30	Free Hour	
12:30 -13:30	Lunch Break	
13:30 -14:10	Free Hour	
14:20 -15:00	Free Hour	
15:10 -15:50	Free Hour	
16:00 -16:40	Elective Courses	
16:50 -17:30	Elective Courses	

07.12.2022 WEDNESDAY		
08:30 -09:10	Free Hour	
09:20 -10:00	ENG 105: English for Academic Purposes I Module 2: Group Work & Projects	Dr. Nafiye Çiğdem Aktekin
10:10 -10:50	ENG 105: English for Academic Purposes I Module 2: Group Work & Projects	Dr. Nafiye Çiğdem Aktekin
11:00 -11:40	NRS 109: Health Assessment Assesment of Health according to the Stages of Development -Assessment of the healthy child	Assoc. Prof. Esra Uğur Res. Asst. Denizhan Yıldızbaş Res. Asst. Dilara Sert
11:50 -12:30	NRS 109: Health Assessment Assesment of Health according to the Stages of Development -Assessment of the healthy child	Assoc. Prof. Esra Uğur Res. Asst. Denizhan Yıldızbaş Res. Asst. Dilara Sert
12:30 -13:30	Lunch Break	
13:30 -14:10	BIL 101: Introduction to Computers • Microsoft Power Point App II	Lect. Murat KAYA
14:20 -15:00	BIL 101: Introduction to Computers • Microsoft Power Point App II	Lect. Murat KAYA
15:10 -15:50	Free Hour	
16:00 -16:40	Elective Courses	
16:50 -17:30	Elective Courses	

08.12.2022 THURSDAY		
08:30 -09:10	ATA 101: Atatürk Principles and the History of Turkish Revolution	
09:20 -10:00	ATA 101: Atatürk Principles and the History of Turkish Revolution	
10:10 -10:50	Free Hour	
11:00 -11:40	ENG 105: English for Academic Purposes I Body Organization Part 4	Dr. Nafiye Çiğdem Aktekin
11:50 -12:30	ENG 105: English for Academic Purposes I Body Organization Part 4	Dr. Nafiye Çiğdem Aktekin
12:30 -13:30	Lunch Break	
13:30 -14:10	Free Hour	
14:20 -15:00	Free Hour	
15:10 -15:50	Free Hour	

16:00 -16:40	Elective Courses	
16:50 -17:30	Elective Courses	

09.12.2022FRIDAY		
08:30 -09:10	NRS 105: Anatomy I Neck muscles, mimic muscles, masticatory muscles, face vessels and nerves, cervical plexus	Assist. Prof. Abdulveli İsmailoğlu
09:20 -10:00	NRS 105: Anatomy I Neck muscles, mimic muscles, masticatory muscles, face vessels and nerves, cervical plexus	Assist. Prof. Abdulveli İsmailoğlu
10:10 -10:50	NRS 105: Anatomy I Neck muscles, mimic muscles, masticatory muscles, face vessels and nerves, cervical plexus	Assist. Prof. Abdulveli İsmailoğlu
11:00 -11:40	TUR 101: Turkish Language I	
11:50 -12:30	TUR 101: Turkish Language I	
12:30 -13:30	Lunch Break	
13:30 -14:10	Free Hour	
14:20 -15:00	Free Hour	
15:10 -15:50	Free Hour	
16:00 -16:40	Free Hour	
16:50 -17:30	Free Hour	

12.12.2022 MONDAY		
08:30 -09:10	Free Hour	
09:20 -10:00	NRS 101: Introduction to the Health Sciences and Nursing Models and Theories in Nursing-2	Assoc. Prof. Esra Uğur Res. Asst. Denizhan Yıldızbaş
10:10 -10:50	NRS 101: Introduction to the Health Sciences and Nursing Models and Theories in Nursing-2	Assoc. Prof. Esra Uğur Res. Asst. Denizhan Yıldızbaş
11:00 -11:40	BIL 101: Introduction to Computers - Communicating & Sharing Resources on Network	Lect. Murat KAYA
11:50 -12:30	Free Hour	
12:30 -13:30	Lunch Break	
13:30 -14:10	NRS 109: Health Assessment Taking Health History and Physical Examination (HEAD TO TOE ASSESSMENT)	Assoc. Prof. Esra Uğur Res. Asst. Denizhan Yıldızbaş Res. Asst. Dilara Sert
14:20 -15:00	NRS 109: Health Assessment Taking Health History and Physical Examination (HEAD TO TOE ASSESSMENT)	Assoc. Prof. Esra Uğur Res. Asst. Denizhan Yıldızbaş Res. Asst. Dilara Sert
15:10 -15:50	NRS 109: Health Assessment Taking Health History and Physical Examination (HEAD TO TOE ASSESSMENT)	Assoc. Prof. Esra Uğur Res. Asst. Denizhan Yıldızbaş Res. Asst. Dilara Sert
16:00 -16:40	NRS 109: Health Assessment Taking Health History and Physical Examination (HEAD TO TOE ASSESSMENT)	Assoc. Prof. Esra Uğur Res. Asst. Denizhan Yıldızbaş Res. Asst. Dilara Sert
16:50 -17:30	Free Hour	

13.12.2022 TUESDAY		
08:30 -09:10	NRS 107: Physiology I Physiology of body defense system	Lect. Tülin Altınoluk
09:20 -10:00	NRS 107: Physiology I Physiology of body defense system	Lect. Tülin Altınoluk
10:10 -10:50	PSI 101: General Psychology Stress and emotion 2	Clinical Psychologist Cansu Hisar
11:00 -11:40	PSI 101: General Psychology Stress and emotion 2	Clinical Psychologist Cansu Hisar
11:50 -12:30	Free Hour	
12:30 -13:30	Lunch Break	

13:30 -14:10	Free Hour	
14:20 -15:00	Free Hour	
15:10 -15:50	Free Hour	
16:00 -16:40	Elective Courses	
16:50 -17:30	Elective Courses	

14.12.2022 WEDNESDAY		
08:30 -09:10	Free Hour	
09:20 -10:00	ENG 105: English for Academic Purposes I Body Organization Part 5	Dr. Nafiye Çiğdem Aktekin
10:10 -10:50	ENG 105: English for Academic Purposes I Body Organization Part 5	Dr. Nafiye Çiğdem Aktekin
11:00 -11:40	NRS 109: Health Assessment Assessment of Health according to the Stages of Development -Assessment of elderly health	Assoc. Prof. Esra Uğur Res. Asst. Denizhan Yıldızbaş Res. Asst. Dilara Sert
11:50 -12:30	NRS 109: Health Assessment Assessment of Health according to the Stages of Development -Assessment of elderly health	Assoc. Prof. Esra Uğur Res. Asst. Denizhan Yıldızbaş Res. Asst. Dilara Sert
12:30 -13:30	Lunch Break	
13:30 -14:10	BIL 101: Introduction to Computers • Microsoft Power Point App III	Lect. Murat KAYA
14:20 -15:00	BIL 101: Introduction to Computers • Microsoft Power Point App III	Lect. Murat KAYA
15:10 -15:50	Free Hour	
16:00 -16:40	Elective Courses	
16:50 -17:30	Elective Courses	

15.12.2022 THURSDAY		
08:30 -09:10	ATA 101: Atatürk Principles and the History of Turkish Revolution	
09:20 -10:00	ATA 101: Atatürk Principles and the History of Turkish Revolution	
10:10 -10:50	Free Hour	
11:00 -11:40	ENG 105: English for Academic Purposes I Module 2: Group Work & Projects	Dr. Nafiye Çiğdem Aktekin
11:50 -12:30	ENG 105: English for Academic Purposes I Module 2: Group Work & Projects	Dr. Nafiye Çiğdem Aktekin
12:30 -13:30	Lunch Break	
13:30 -14:10	Free Hour	
14:20 -15:00	Free Hour	
15:10 -15:50	Free Hour	
16:00 -16:40	Elective Courses	
16:50 -17:30	Elective Courses	

16.12.2022 FRIDAY		
08:30 -09:10	NRS 105: Anatomy I Muscles of posterior abdominal wall, Deep back muscles, Muscles of thoracic wall, Intercostal nerves and vessels	Assist. Prof. Abdulveli İsmailoğlu
09:20 -10:00	NRS 105: Anatomy I Muscles of posterior abdominal wall, Deep back muscles, Muscles of thoracic wall, Intercostal nerves and vessels	Assist. Prof. Abdulveli İsmailoğlu
10:10 -10:50	NRS 105: Anatomy I Muscles of posterior abdominal wall, Deep back muscles, Muscles of thoracic wall, Intercostal nerves and vessels	Assist. Prof. Abdulveli İsmailoğlu
11:00 -11:40	TUR 101: Turkish Language I	
11:50 -12:30	TUR 101: Turkish Language I	
12:30 -13:30	Lunch Break	

13:30 -14:10	Free Hour	
14:20 -15:00	Free Hour	
15:10 -15:50	Free Hour	
16:00 -16:40	Free Hour	
16:50 -17:30	Free Hour	

19.12.2022 MONDAY		
08:30 -09:10	Free Hour	
09:20 -10:00	NRS 101: Introduction to the Health Sciences and Nursing Ethics and values in nursing	Assoc. Prof. Esra Uğur Res. Asst. Denizhan Yıldızbaş
10:10 -10:50	NRS 101: Introduction to the Health Sciences and Nursing Ethics and values in nursing	Assoc. Prof. Esra Uğur Res. Asst. Denizhan Yıldızbaş
11:00 -11:40	BIL 101: Introduction to Computers Wired&Wireless Communication	Lect. Murat KAYA
11:50 -12:30	Free Hour	
12:30 -13:30	Lunch Break	
13:30 -14:10	NRS 109: Health Assessment Taking Health History and Physical Examination (HEAD TO TOE ASSESSMENT)	Assoc. Prof. Esra Uğur Res. Asst. Denizhan Yıldızbaş Res. Asst. Dilara Sert
14:20 -15:00	NRS 109: Health Assessment Taking Health History and Physical Examination (HEAD TO TOE ASSESSMENT)	Assoc. Prof. Esra Uğur Res. Asst. Denizhan Yıldızbaş Res. Asst. Dilara Sert
15:10 -15:50	NRS 109: Health Assessment Taking Health History and Physical Examination (HEAD TO TOE ASSESSMENT)	Assoc. Prof. Esra Uğur Res. Asst. Denizhan Yıldızbaş Res. Asst. Dilara Sert
16:00 -16:40	NRS 109: Health Assessment Taking Health History and Physical Examination (HEAD TO TOE ASSESSMENT)	Assoc. Prof. Esra Uğur Res. Asst. Denizhan Yıldızbaş Res. Asst. Dilara Sert
16:50 -17:30	Free Hour	

20.12.2022 TUESDAY		
08:30 -09:10	NRS 107: Physiology I Functional structures of the heart and circulation	Lect. Tülin Altınoluk
09:20 -10:00	NRS 107: Physiology I Functional structures of the heart and circulation	Lect. Tülin Altınoluk
10:10 -10:50	PSI 101: General Psychology Social Psychology 1	Clinical Psychologist Cansu Hisar
11:00 -11:40	PSI 101: General Psychology Social Psychology 1	Clinical Psychologist Cansu Hisar
11:50 -12:30	Free Hour	
12:30 -13:30	Lunch Break	
13:30 -14:10	Free Hour	
14:20 -15:00	Free Hour	
15:10 -15:50	Free Hour	
16:00 -16:40	Elective Courses	
16:50 -17:30	Elective Courses	

21.12.2022 WEDNESDAY		
08:30 -09:10	Free Hour	
09:20 -10:00	ENG 105: English for Academic Purposes I Module 2: Group Work & Projects	Dr. Nafiye Çiğdem Aktekin
10:10 -10:50	ENG 105: English for Academic Purposes I Module 2: Group Work & Projects	Dr. Nafiye Çiğdem Aktekin
11:00 -11:40	NRS 109: Health Assessment General Review-Competition-Portfolio Carnival	Assoc. Prof. Esra Uğur Res. Asst. Denizhan Yıldızbaş Res. Asst. Dilara Sert

11:50 -12:30	NRS 109: Health Assessment General Review-Competition-Portfolio Carnival	Assoc. Prof. Esra Uğur Res. Asst. Denizhan Yıldızbaş Res. Asst. Dilara Sert
12:30 -13:30	Lunch Break	
13:30 -14:10	BIL 101: Introduction to Computers • Microsoft Access App I	Lect. Murat KAYA
14:20 -15:00	BIL 101: Introduction to Computers • Microsoft Access App I	Lect. Murat KAYA
15:10 -15:50	Free Hour	
16:00 -16:40	Elective Courses	
16:50 -17:30	NRS 105: Anatomy I Quiz 2	Assist. Prof. Abdulveli İsmailoğlu

22.12.2022 THURSDAY		
08:30 -09:10	ATA 101: Atatürk Principles and the History of Turkish Revolution	
09:20 -10:00	ATA 101: Atatürk Principles and the History of Turkish Revolution	
10:10 -10:50	Free Hour	
11:00 -11:40	ENG 105: English for Academic Purposes I Module 2: Group Work & Projects	Dr. Nafiye Çiğdem Aktekin
11:50 -12:30	ENG 105: English for Academic Purposes I Module 2: Group Work & Projects	Dr. Nafiye Çiğdem Aktekin
12:30 -13:30	Lunch Break	
13:30 -14:10	Free Hour	
14:20 -15:00	Free Hour	
15:10 -15:50	Free Hour	
16:00 -16:40	Elective Courses	
16:50 -17:30	Elective Courses	

23.12.2022 FRIDAY		
08:30 -09:10	NRS 105: Anatomy I Discussion	Assist. Prof. Abdulveli İsmailoğlu
09:20 -10:00	NRS 105: Anatomy I Discussion	Assist. Prof. Abdulveli İsmailoğlu
10:10 -10:50	NRS 105: Anatomy I Revision	Assist. Prof. Abdulveli İsmailoğlu
11:00 -11:40	TUR 101: Turkish Language I	
11:50 -12:30	TUR 101: Turkish Language I	
12:30 -13:30	Lunch Break	
13:30 -14:10	Free Hour	
14:20 -15:00	Free Hour	
15:10 -15:50	Free Hour	
16:00 -16:40	Free Hour	
16:50 -17:30	Free Hour	

25.12.2022 MONDAY		
08:30 -09:10	Free Hour	
09:20 -10:00	NRS 101: Introduction to the Health Sciences and Nursing Healthcare Team & Nurse's Role in the Healthcare Team	Assoc. Prof. Esra Uğur Res. Asst. Denizhan Yıldızbaş
10:10 -10:50	NRS 101: Introduction to the Health Sciences and Nursing Healthcare Team & Nurse's Role in the Healthcare Team	Assoc. Prof. Esra Uğur Res. Asst. Denizhan Yıldızbaş
11:00 -11:40	BIL 101: Introduction to Computers Privacy, Crime & Security	Lect. Murat KAYA
11:50 -12:30	Free Hour	
12:30 -13:30	Lunch Break	

13:30 -14:10	NRS 109: Health Assessment PRACTICAL EXAM Health history taking and physical examination (General Review)	Assoc. Prof. Esra Uğur Res. Asst. Denizhan Yıldızbaş Res. Asst. Dilara Sert
14:20 -15:00	NRS 109: Health Assessment PRACTICAL EXAM Health history taking and physical examination (General Review)	Assoc. Prof. Esra Uğur Res. Asst. Denizhan Yıldızbaş Res. Asst. Dilara Sert
15:10 -15:50	NRS 109: Health Assessment PRACTICAL EXAM Health history taking and physical examination (General Review)	Assoc. Prof. Esra Uğur Res. Asst. Denizhan Yıldızbaş Res. Asst. Dilara Sert
16:00 -16:40	NRS 109: Health Assessment PRACTICAL EXAM Health history taking and physical examination (General Review)	Assoc. Prof. Esra Uğur Res. Asst. Denizhan Yıldızbaş Res. Asst. Dilara Sert
16:50 -17:30	Free Hour	

26.12.2022 TUESDAY		
08:30 -09:10	NRS 107: Physiology I Physiological properties of cardiac muscle, regulation of cardiac function	Lect. Tülin Altınoluk
09:20 -10:00	NRS 107: Physiology I Physiological properties of cardiac muscle, regulation of cardiac function	Lect. Tülin Altınoluk
10:10 -10:50	PSI 101: General Psychology Social Psychology 2	Clinical Psychologist Cansu Hisar
11:00 -11:40	PSI 101: General Psychology Social Psychology 2	Clinical Psychologist Cansu Hisar
11:50 -12:30	Free Hour	
12:30 -13:30	Lunch Break	
13:30 -14:10	Free Hour	
14:20 -15:00	Free Hour	
15:10 -15:50	Free Hour	
16:00 -16:40	Elective Courses	
16:50 -17:30	Elective Courses	

27.12.2022 WEDNESDAY		
08:30 -09:10	Free Hour	
09:20 -10:00	ENG 105: English for Academic Purposes I Study Time for the Medical Terminology Final	Dr. Nafiye Çiğdem Aktekin
10:10 -10:50	ENG 105: English for Academic Purposes I Study Time for the Medical Terminology Final	Dr. Nafiye Çiğdem Aktekin
11:00 -11:40	NRS 109: Health Assessment General Review	Assoc. Prof. Esra Uğur Res. Asst. Denizhan Yıldızbaş Res. Asst. Dilara Sert
11:50 -12:30	NRS 109: Health Assessment General Review	Assoc. Prof. Esra Uğur Res. Asst. Denizhan Yıldızbaş Res. Asst. Dilara Sert
12:30 -13:30	Lunch Break	
13:30 -14:10	BIL 101: Introduction to Computers • HTML	Lect. Murat KAYA
14:20 -15:00	BIL 101: Introduction to Computers • HTML	Lect. Murat KAYA
15:10 -15:50	Free Hour	
16:00 -16:40	Elective Courses	
16:50 -17:30	Elective Courses	

28.12.2022 THURSDAY		
08:30 -09:10	ATA 101: Atatürk Principles and the History of Turkish Revolution	

09:20 -10:00	ATA 101: Atatürk Principles and the History of Turkish Revolution	
10:10 -10:50	Free Hour	
11:00 -11:40	ENG 105: English for Academic Purposes I Study Time for the Medical Terminology Final	Dr. Nafiye Çiğdem Aktekin
11:50 -12:30	ENG 105: English for Academic Purposes I Study Time for the Medical Terminology Final	Dr. Nafiye Çiğdem Aktekin
12:30 -13:30	Lunch Break	
13:30 -14:10	Free Hour	
14:20 -15:00	Free Hour	
15:10 -15:50	Free Hour	
16:00 -16:40	Elective Courses	
16:50 -17:30	Elective Courses	

29.12.2022FRIDAY		
08:30 -09:10	NRS 105: Anatomy I General considerations: gastrointestinal system. Oral cavity, pharynx, oesophagus, stomach	Assist. Prof. Abdulveli İsmailoğlu
09:20 -10:00	NRS 105: Anatomy I General considerations: gastrointestinal system. Oral cavity, pharynx, oesophagus, stomach	Assist. Prof. Abdulveli İsmailoğlu
10:10 -10:50	NRS 105: Anatomy I General considerations: gastrointestinal system. Oral cavity, pharynx, oesophagus, stomach	Assist. Prof. Abdulveli İsmailoğlu
11:00 -11:40	TUR 101: Turkish Language I	
11:50 -12:30	TUR 101: Turkish Language I	
12:30 -13:30	Lunch Break	
13:30 -14:10	Free Hour	
14:20 -15:00	Free Hour	
15:10 -15:50	Free Hour	
16:00 -16:40	Free Hour	
16:50 -17:30	Free Hour	

02.01.2023 MONDAY		
08:30 -09:10	Free Hour	
09:20 -10:00	NRS 101: Introduction to the Health Sciences and Nursing Reflections of Technology on Nursing Profession and Care -Course Evaluation	Assoc. Prof. Esra Uğur Res. Asst. Denizhan Yıldızbaş
10:10 -10:50	NRS 101: Introduction to the Health Sciences and Nursing Reflections of Technology on Nursing Profession and Care -Course Evaluation	Assoc. Prof. Esra Uğur Res. Asst. Denizhan Yıldızbaş
11:00 -11:40	BIL 101: Introduction to Computers Overview	Lect. Murat KAYA
11:50 -12:30	Free Hour	
12:30 -13:30	Lunch Break	
13:30 -14:10	NRS 109: Health Assessment PRACTICAL EXAM Health history taking and physical examination (General Review)	Assoc. Prof. Esra Uğur Res. Asst. Denizhan Yıldızbaş Res. Asst. Dilara Sert
14:20 -15:00	NRS 109: Health Assessment PRACTICAL EXAM Health history taking and physical examination (General Review)	Assoc. Prof. Esra Uğur Res. Asst. Denizhan Yıldızbaş Res. Asst. Dilara Sert
15:10 -15:50	NRS 109: Health Assessment PRACTICAL EXAM Health history taking and physical examination (General Review)	Assoc. Prof. Esra Uğur Res. Asst. Denizhan Yıldızbaş Res. Asst. Dilara Sert

16:00 -16:40	NRS 109: Health Assessment PRACTICAL EXAM Health history taking and physical examination (General Review)	Assoc. Prof. Esra Uğur Res. Asst. Denizhan Yıldızbaş Res. Asst. Dilara Sert
16:50 -17:30	Free Hour	

03.01.2023 TUESDAY		
08:30 -09:10	NRS 107: Physiology I Local and humoral control of blood flow, microcirculation, lymphatic circulation	Lect. Tülin Altınoluk
09:20 -10:00	NRS 107: Physiology I Local and humoral control of blood flow, microcirculation, lymphatic circulation	Lect. Tülin Altınoluk
10:10 -10:50	PSI 101: General Psychology Psychological Disorders	Clinical Psychologist Cansu Hisar
11:00 -11:40	PSI 101: General Psychology Psychological Disorders	Clinical Psychologist Cansu Hisar
11:50 -12:30	Free Hour	
12:30 -13:30	Lunch Break	
13:30 -14:10	Free Hour	
14:20 -15:00	Free Hour	
15:10 -15:50	Free Hour	
16:00 -16:40	Elective Courses	
16:50 -17:30	Elective Courses	

04.01.2023 WEDNESDAY		
08:30 -09:10	Free Hour	
09:20 -10:00	ENG 105: English for Academic Purposes I Medical Terminology Final Exam	Dr. Nafiye Çiğdem Aktekin
10:10 -10:50	ENG 105: English for Academic Purposes I Medical Terminology Final Exam	Dr. Nafiye Çiğdem Aktekin
11:00 -11:40	NRS 109: Health Assessment Course evaluation	Assoc. Prof. Esra Uğur Res. Asst. Denizhan Yıldızbaş Res. Asst. Dilara Sert
11:50 -12:30	NRS 109: Health Assessment Course evaluation	Assoc. Prof. Esra Uğur Res. Asst. Denizhan Yıldızbaş Res. Asst. Dilara Sert
12:30 -13:30	Lunch Break	
13:30 -14:10	BIL 101: Introduction to Computers • HTML	Lect. Murat KAYA
14:20 -15:00	BIL 101: Introduction to Computers • HTML	Lect. Murat KAYA
15:10 -15:50	Free Hour	
16:00 -16:40	Elective Courses	
16:50 -17:30	Elective Courses	

05.01.2023 THURSDAY		
08:30 -09:10	ATA 101: Atatürk Principles and the History of Turkish Revolution	
09:20 -10:00	ATA 101: Atatürk Principles and the History of Turkish Revolution	
10:10 -10:50	Free Hour	
11:00 -11:40	ENG 105: English for Academic Purposes I	Dr. Nafiye Çiğdem Aktekin
11:50 -12:30	ENG 105: English for Academic Purposes I	Dr. Nafiye Çiğdem Aktekin
12:30 -13:30	Lunch Break	
13:30 -14:10	Free Hour	
14:20 -15:00	Free Hour	
15:10 -15:50	Free Hour	
16:00 -16:40	Elective Courses	
16:50 -17:30	Elective Courses	

06.01.2023 FRIDAY		
-------------------	--	--

08:30 -09:10	NRS 105: Anatomy I Small intestines: Duodenum, jejunum, ileum, large intestines, rectum and anal canal, Liver, Gall bladder, pancreas, spleen, vessels and nerves of gastrointestinal system	Assist. Prof. Abdulveli İsmailoğlu
09:20 -10:00	NRS 105: Anatomy I Small intestines: Duodenum, jejunum, ileum, large intestines, rectum and anal canal, Liver, Gall bladder, pancreas, spleen, vessels and nerves of gastrointestinal system	Assist. Prof. Abdulveli İsmailoğlu
10:10 -10:50	NRS 105: Anatomy I Small intestines: Duodenum, jejunum, ileum, large intestines, rectum and anal canal, Liver, Gall bladder, pancreas, spleen, vessels and nerves of gastrointestinal system	Assist. Prof. Abdulveli İsmailoğlu
11:00 -11:40	TUR 101: Turkish Language I	
11:50 -12:30	TUR 101: Turkish Language I	
12:30 -13:30	Lunch Break	
13:30 -14:10	Free Hour	
14:20 -15:00	Free Hour	
15:10 -15:50	Free Hour	
16:00 -16:40	Free Hour	
16:50 -17:30	Free Hour	

NURSING DEPARTMENT

2022 -2023

*THIRD
SEMESTER-
FALL-
SCHEDULE*



II. GRADE FALL SEMESTER PROGRAM GUIDE

III. Semester					
Course Code	Course Name	T	P	LC	ECTS
NRS 207	Medical Nursing	4	12	10	13
NRS 209	Principles and Methods in Nursing Education	3	0	3	5
NRS 205	Nursing Specific Pharmacology	2	0	2	3
NRS 241	Pathology	2	0	2	2
NRS 201 English For Specific Purposes I dersi kaldırıldı.					
NRS 237	Human Behaviour and Communication	2	2	3	3
ACU XXX	Elective Courses II	2	0	2	1
Total		15	14	22	27

T.C
ACIBADEM UNIVERSITY
FACULTY OF HEALTH SCIENCE
NURSING (ENGLISH)
II. CLASS III. SEMESTER WEEKLY LESSON SCHEDULE
2022-2023 ACADEMIC YEAR

	MONDAY	TUESDAY	WEDNESDAY	THURSDAY	FRIDAY
8.30- 9.10					Medical Nursing NRS 207 Öğr. Gör. Zehra Belhan PRACTICE IN CLASS
9.20-10.00	Medical Nursing NRS 207 Öğr. Gör. Zehra Belhan THEROTICAL IN CLASS A 102		Medical Nursing NRS 207 Öğr. Gör. Zehra Belhan LAB IN CLASS A 206	Pathology NRS 241 Dr. Zeynep Tosuner ONLINE	Medical Nursing NRS 207 Öğr. Gör. Zehra Belhan PRACTICE IN CLASS
10.10-10.50	Medical Nursing NRS 207 Öğr. Gör. Zehra Belhan THEROTICAL IN CLASS A 102		Medical Nursing NRS 207 Öğr. Gör. Zehra Belhan LAB IN CLASS A 206	Pathology NRS 241 Dr. Zeynep Tosuner ONLINE	Medical Nursing NRS 207 Öğr. Gör. Zehra Belhan PRACTICE IN CLASS
11.00 -11.40	Medical Nursing NRS 207 Öğr. Gör. Zehra Belhan THEROTICAL IN CLASS A 102		Medical Nursing NRS 207 Öğr. Gör. Zehra Belhan LAB IN CLASS A 206	Nursing Spesific Pharmacology NRS 205 Dr.Öğr.Üyesi Dilara Bayram Dr.Öğr.Üyesi Melis Yavuz ONLINE	Medical Nursing NRS 207 Öğr. Gör. Zehra Belhan PRACTICE IN CLASS
11.50 -12.30	Medical Nursing NRS 207 Öğr. Gör. Zehra Belhan THEROTICAL IN CLASS A 102		Medical Nursing NRS 207 Öğr. Gör. Zehra Belhan LAB IN CLASS A 206	Nursing Spesific Pharmacology NRS 205 Dr.Öğr.Üyesi Dilara Bayram Dr.Öğr.Üyesi Melis Yavuz ONLINE	Medical Nursing NRS 207 Öğr. Gör. Zehra Belhan PRACTICE IN CLASS
LUNCH BREAK					
13.30 -14.10					Medical Nursing NRS 207 Öğr. Gör. Zehra Belhan PRACTICE IN CLASS
14.20 -15.00			Human Behaviour and Communication NRS 237 Zeynep Zonp IN CLASS A 204		Medical Nursing NRS 207 Öğr. Gör. Zehra Belhan PRACTICE IN CLASS
15.10 -15.50			Human Behaviour and Communication NRS 237 Zeynep Zonp IN CLASS A 204	Principles and Methods in Nursing Education NRS 209 Zeynep Zonp ONLINE	Medical Nursing NRS 207 Öğr. Gör. Zehra Belhan PRACTICE IN CLASS
16.00 -16.40	Elective courses II	Human Behaviour and Communication NRS 237 Zeynep Zonp ONLINE	Elective courses II	Principles and Methods in Nursing Education NRS 209 Zeynep Zonp ONLINE	
16.50-17.30	Elective courses II	Human Behaviour and Communication NRS 237 Zeynep Zonp ONLINE	Elective courses II	Principles and Methods in Nursing Education NRS 209 Zeynep Zonp ONLINE	

2022-2023 FALL SEMESTER PROGRAM GUIDE

16:50 -17:30	Elective Courses	
--------------	------------------	--

04.10.2022 TUESDAY		
08:30 -09:10	Free Hour	
09:20 -10:00	Free Hour	
10:10 -10:50	Free Hour	
11:00 -11:40	Free Hour	
11:50 -12:30	Free Hour	
12:30 -13:30	Lunch Break	
13:30 -14:10	Free Hour	
14:20 -15:00	Free Hour	
15:10 -15:50	Free Hour	
16:00 -16:40	Introduction and Importance of the Course Lab description Brain and Behavior Nervous system Cortex and its parts Brain lobes and their functions-I	Ass. Prof. Zeynep Zonp
16:50 -17:30	Introduction and Importance of the Course Lab description Brain and Behavior Nervous system Cortex and its parts Brain lobes and their functions-I	Ass. Prof. Zeynep Zonp

05.10.2022 WEDNESDAY		
08:30 -09:10	Free Hour	
09:20 -10:00	Laboratory processes introduction Basic Life Support Concept map	Prof. Dr. Vesile Ünver, Res. Asst. Tuğba Yorulmaz, Instr. Zehra Belhan, Assist. Prof.Nermin Ocaktan, Instr. Berrak Fulser, MSc RN. Canan Yüksel Acar
10:10 -10:50	Laboratory processes introduction Basic Life Support Concept map	Prof. Dr. Vesile Ünver, Res. Asst. Tuğba Yorulmaz, Instr. Zehra Belhan, Assist. Prof.Nermin Ocaktan, Instr. Berrak Fulser, MSc RN. Canan Yüksel Acar
11:00 -11:40	Laboratory processes introduction Basic Life Support Concept map	Prof. Dr. Vesile Ünver, Res. Asst. Tuğba Yorulmaz, Instr. Zehra Belhan, Assist. Prof.Nermin Ocaktan, Instr. Berrak Fulser, MSc RN. Canan Yüksel Acar
11:50 -12:30	Laboratory processes introduction Basic Life Support Concept map	Prof. Dr. Vesile Ünver, Res. Asst. Tuğba Yorulmaz, Instr. Zehra Belhan, Assist. Prof.Nermin Ocaktan, Instr. Berrak Fulser, MSc RN. Canan Yüksel Acar
12:30 -13:30	Lunch Break	
13:30 -14:10	Free Hour	
14:20 -15:00	Get to know each other: Cultural differences and sameness	Ass. Prof. Zeynep Zonp

15:10 -15:50	Get to know each other: Cultural differences and sameness	Ass. Prof. Zeynep Zonp
16:00 -16:40	Elective Courses	
16:50 -17:30	Elective Courses	

06.10.2022 THURSDAY		
08:30 -09:10	Free Hour	
09:20 -10:00	Free Hour	
10:10 -10:50	Free Hour	
11:00 -11:40	Introduction to Pharmacology, Basic Concepts	Ass.Prof. Dilara Bayram
11:50 -12:30	Introduction to Pharmacology, Basic Concepts	Ass.Prof. Dilara Bayram
12:30 -13:30	Lunch Break	
13:30 -14:10	Free Hour	
14:20 -15:00	Free Hour	
15:10 -15:50	Basic Concepts of Education -Learning-teaching process -Lifelong learning	Ass. Prof. Zeynep Zonp
16:00 -16:40	Basic Concepts of Education -Learning-teaching process -Lifelong learning	Ass. Prof. Zeynep Zonp
16:50 -17:30	Basic Concepts of Education -Learning-teaching process -Lifelong learning	Ass. Prof. Zeynep Zonp

07.10.2022 FRIDAY		
08:30 -09:10	Basic Life Support	Prof. Dr. Vesile Ünver, Res. Asst. Tuğba Yorulmaz, Instr. Zehra Belhan, Assist. Prof.Nermin Ocaktan, Instr. Berrak Fulser, MSc RN. Canan Yüksel Acar
09:20 -10:00	Basic Life Support	Prof. Dr. Vesile Ünver, Res. Asst. Tuğba Yorulmaz, Instr. Zehra Belhan, Assist. Prof.Nermin Ocaktan, Instr. Berrak Fulser, MSc RN. Canan Yüksel Acar
10:10 -10:50	Basic Life Support	Prof. Dr. Vesile Ünver, Res. Asst. Tuğba Yorulmaz, Instr. Zehra Belhan, Assist. Prof.Nermin Ocaktan, Instr. Berrak Fulser, MSc RN. Canan Yüksel Acar
11:00 -11:40	Basic Life Support	Prof. Dr. Vesile Ünver, Res. Asst. Tuğba Yorulmaz, Instr. Zehra Belhan, Assist. Prof.Nermin Ocaktan, Instr. Berrak Fulser, MSc RN. Canan Yüksel Acar
11:50 -12:30	Basic Life Support	Prof. Dr. Vesile Ünver, Res. Asst. Tuğba Yorulmaz, Instr. Zehra Belhan, Assist. Prof.Nermin Ocaktan, Instr. Berrak Fulser, MSc RN. Canan Yüksel Acar
12:30 -13:30	Lunch Break	Prof. Dr. Vesile Ünver, Res. Asst. Tuğba Yorulmaz, Instr. Zehra Belhan, Assist. Prof.Nermin Ocaktan, Instr.

		Berrak Fulser, MSc RN. Canan Yüksel Acar
13:30 -14:10	Basic Life Support	Prof. Dr. Vesile Ünver, Res. Asst. Tuğba Yorulmaz, Instr. Zehra Belhan, Assist. Prof.Nermin Ocaktan, Instr. Berrak Fulser, MSc RN. Canan Yüksel Acar
14:20 -15:00	Basic Life Support	Prof. Dr. Vesile Ünver, Res. Asst. Tuğba Yorulmaz, Instr. Zehra Belhan, Assist. Prof.Nermin Ocaktan, Instr. Berrak Fulser, MSc RN. Canan Yüksel Acar
15:10 -15:50	Basic Life Support	Prof. Dr. Vesile Ünver, Res. Asst. Tuğba Yorulmaz, Instr. Zehra Belhan, Assist. Prof.Nermin Ocaktan, Instr. Berrak Fulser, MSc RN. Canan Yüksel Acar
16:00 -16:40	Basic Life Support	Prof. Dr. Vesile Ünver, Res. Asst. Tuğba Yorulmaz, Instr. Zehra Belhan, Assist. Prof.Nermin Ocaktan, Instr. Berrak Fulser, MSc RN. Canan Yüksel Acar
16:50 -17:30	Free Hour	

10.10.2022 MONDAY		
08:30 -09:10	Free Hour	
09:20 -10:00	<ul style="list-style-type: none"> • Homeostasis and affecting factors • - Fluid-electrolyte imbalances and nursing care -Acid-base imbalances and nursing care	Instr.Zehra Belhan
10:10 -10:50	Homeostasis and affecting factors - Fluid-electrolyte imbalances and nursing care -Acid-base imbalances and nursing care	Instr.Zehra Belhan
11:00 -11:40	Homeostasis and affecting factors - Fluid-electrolyte imbalances and nursing care -Acid-base imbalances and nursing care	Instr.Zehra Belhan
11:50 -12:30	Homeostasis and affecting factors - Fluid-electrolyte imbalances and nursing care -Acid-base imbalances and nursing care	Instr.Zehra Belhan
12:30 -13:30	Lunch Break	
13:30 -14:10	Free Hour	
14:20 -15:00	Free Hour	
15:10 -15:50	Free Hour	
16:00 -16:40	Elective Courses	
16:50 -17:30	Elective Courses	

11.10.2022 TUESDAY		
08:30 -09:10	Free Hour	
09:20 -10:00	Free Hour	
10:10 -10:50	Free Hour	
11:00 -11:40	Free Hour	
11:50 -12:30	Free Hour	
12:30 -13:30	Lunch Break	
13:30 -14:10	Free Hour	
14:20 -15:00	Free Hour	
15:10 -15:50	Free Hour	
16:00 -16:40	Brain and Behavior *Neurotransmitters *Hormones effective on behavior-II	Ass. Prof. Zeynep Zonp

16:50 -17:30	Brain and Behavior *Neurotransmitters *Hormones effective on behavior-II	Ass. Prof. Zeynep Zonp
--------------	--	------------------------

12.10.2022 WEDNESDAY		
08:30 -09:10	Free Hour	
09:20 -10:00	Lab: Tracheostomy Care and tracheostomy aspiration	Prof. Dr. Vesile Ünver, Res. Asst. Tuğba Yorulmaz, Instr. Zehra Belhan, Assist. Prof. Nermin Ocaktan, Instr. Berrak Fulser, MSc RN. Canan Yüksel Acar
10:10 -10:50	Lab: Tracheostomy Care and tracheostomy aspiration	Prof. Dr. Vesile Ünver, Res. Asst. Tuğba Yorulmaz, Instr. Zehra Belhan, Assist. Prof. Nermin Ocaktan, Instr. Berrak Fulser, MSc RN. Canan Yüksel Acar
11:00 -11:40	Lab: Tracheostomy Care and tracheostomy aspiration	Prof. Dr. Vesile Ünver, Res. Asst. Tuğba Yorulmaz, Instr. Zehra Belhan, Assist. Prof. Nermin Ocaktan, Instr. Berrak Fulser, MSc RN. Canan Yüksel Acar
11:50 -12:30	Lab: Tracheostomy Care and tracheostomy aspiration	Prof. Dr. Vesile Ünver, Res. Asst. Tuğba Yorulmaz, Instr. Zehra Belhan, Assist. Prof. Nermin Ocaktan, Instr. Berrak Fulser, MSc RN. Canan Yüksel Acar
12:30 -13:30	Lunch Break	
13:30 -14:10	Free Hour	
14:20 -15:00	*Starting with YOU: *To Learn to Communicate *Understanding Yourself * Recognizing and defining yourself and the other person.	Ass. Prof. Zeynep Zonp
15:10 -15:50	*Starting with YOU: *To Learn to Communicate *Understanding Yourself * Recognizing and defining yourself and the other person.	Ass. Prof. Zeynep Zonp
16:00 -16:40	Elective Courses	
16:50 -17:30	Elective Courses	

13.10.2022 THURSDAY		
08:30 -09:10	Free Hour	
09:20 -10:00	Introduction to Pathology and Terminology	Ass. Prof. Kemal Behzatoğlu
10:10 -10:50	Introduction to Pathology and Terminology	Ass. Prof. Kemal Behzatoğlu
11:00 -11:40	Pharmacokinetics, Pharmacodynamics	Ass. Prof. Dilara Bayram
11:50 -12:30	Pharmacokinetics, Pharmacodynamics	Ass. Prof. Dilara Bayram
12:30 -13:30	Lunch Break	
13:30 -14:10	Free Hour	
14:20 -15:00	Free Hour	
15:10 -15:50	Learning Theories Nursing Education Philosophy	Ass. Prof. Zeynep Zonp
16:00 -16:40	Learning Theories Nursing Education Philosophy	Ass. Prof. Zeynep Zonp
16:50 -17:30	Learning Theories Nursing Education Philosophy	Ass. Prof. Zeynep Zonp

14.10.2022 FRIDAY		
08:30 -09:10	Clinical Practice Orientation Programme	Prof. Dr. Vesile Ünver, Res. Asst. Tuğba Yorulmaz, Instr.

		Zehra Belhan, Assist. Prof.Nermin Ocaktan, Instr. Berrak Fulser, MSc RN. Canan Yüksel Acar
09:20 -10:00	Clinical Practice Orientation Programme	Prof. Dr. Vesile Ünver, Res. Asst. Tuğba Yorulmaz, Instr. Zehra Belhan, Assist. Prof.Nermin Ocaktan, Instr. Berrak Fulser, MSc RN. Canan Yüksel Acar
10:10 -10:50	Clinical Practice Orientation Programme	Prof. Dr. Vesile Ünver, Res. Asst. Tuğba Yorulmaz, Instr. Zehra Belhan, Assist. Prof.Nermin Ocaktan, Instr. Berrak Fulser, MSc RN. Canan Yüksel Acar
11:00 -11:40	Clinical Practice Orientation Programme	Prof. Dr. Vesile Ünver, Res. Asst. Tuğba Yorulmaz, Instr. Zehra Belhan, Assist. Prof.Nermin Ocaktan, Instr. Berrak Fulser, MSc RN. Canan Yüksel Acar
11:50 -12:30	Clinical Practice Orientation Programme	Prof. Dr. Vesile Ünver, Res. Asst. Tuğba Yorulmaz, Instr. Zehra Belhan, Assist. Prof.Nermin Ocaktan, Instr. Berrak Fulser, MSc RN. Canan Yüksel Acar
12:30 -13:30	Lunch Break	
13:30 -14:10	Clinical Practice Orientation Programme	Prof. Dr. Vesile Ünver, Res. Asst. Tuğba Yorulmaz, Instr. Zehra Belhan, Assist. Prof.Nermin Ocaktan, Instr. Berrak Fulser, MSc RN. Canan Yüksel Acar
14:20 -15:00	Clinical Practice Orientation Programme	Prof. Dr. Vesile Ünver, Res. Asst. Tuğba Yorulmaz, Instr. Zehra Belhan, Assist. Prof.Nermin Ocaktan, Instr. Berrak Fulser, MSc RN. Canan Yüksel Acar
15:10 -15:50	Clinical Practice Orientation Programme	Prof. Dr. Vesile Ünver, Res. Asst. Tuğba Yorulmaz, Instr. Zehra Belhan, Assist. Prof.Nermin Ocaktan, Instr. Berrak Fulser, MSc RN. Canan Yüksel Acar
16:00 -16:40	Clinical Practice Orientation Programme	Prof. Dr. Vesile Ünver, Res. Asst. Tuğba Yorulmaz, Instr. Zehra Belhan, Assist. Prof.Nermin Ocaktan, Instr. Berrak Fulser, MSc RN. Canan Yüksel Acar
16:50 -17:30	Free Hour	

17.10.2022 MONDAY		
08:30 -09:10	Free Hour	
09:20 -10:00	Blood diseases and nursing care	Instr.Zehra Belhan
10:10 -10:50	Blood diseases and nursing care	Instr.Zehra Belhan
11:00 -11:40	Blood diseases and nursing care	Instr.Zehra Belhan
11:50 -12:30	Blood diseases and nursing care	Instr.Zehra Belhan
12:30 -13:30	Lunch Break	

13:30 -14:10	Free Hour	
14:20 -15:00	Free Hour	
15:10 -15:50	Free Hour	
16:00 -16:40	Elective Courses	
16:50 -17:30	Elective Courses	

18.10.2022 TUESDAY		
08:30 -09:10	Free Hour	
09:20 -10:00	Free Hour	
10:10 -10:50	Free Hour	
11:00 -11:40	Free Hour	
11:50 -12:30	Free Hour	
12:30 -13:30	Lunch Break	
13:30 -14:10	Free Hour	
14:20 -15:00	Free Hour	
15:10 -15:50	Free Hour	
16:00 -16:40	The Concept of Personality and Ego Defense Mechanisms *Theories of personality *Structural theory of personality	Ass. Prof. Zeynep Zonp
16:50 -17:30	The Concept of Personality and Ego Defense Mechanisms *Theories of personality *Structural theory of personality	Ass. Prof. Zeynep Zonp

19.10.2022 WEDNESDAY		
08:30 -09:10	Free Hour	
09:20 -10:00	Lab: Blood transfusion	Prof. Dr. Vesile Ünver, Res. Asst. Tuğba Yorulmaz, Instr. Zehra Belhan, Assist. Prof. Nermin Ocaktan, Instr. Berrak Fulser, MSc RN. Canan Yüksel Acar
10:10 -10:50	Lab: Blood transfusion	Prof. Dr. Vesile Ünver, Res. Asst. Tuğba Yorulmaz, Instr. Zehra Belhan, Assist. Prof. Nermin Ocaktan, Instr. Berrak Fulser, MSc RN. Canan Yüksel Acar
11:00 -11:40	Lab: Blood transfusion	Prof. Dr. Vesile Ünver, Res. Asst. Tuğba Yorulmaz, Instr. Zehra Belhan, Assist. Prof. Nermin Ocaktan, Instr. Berrak Fulser, MSc RN. Canan Yüksel Acar
11:50 -12:30	Lab: Blood transfusion	Prof. Dr. Vesile Ünver, Res. Asst. Tuğba Yorulmaz, Instr. Zehra Belhan, Assist. Prof. Nermin Ocaktan, Instr. Berrak Fulser, MSc RN. Canan Yüksel Acar
12:30 -13:30	Lunch Break	
13:30 -14:10	Free Hour	
14:20 -15:00	Self-Knowledge and Understanding Others Prof. Dr. Mehmet Zihni Sungur and Prof. Dr. Doğan Cüceloğlu videos	Ass. Prof. Zeynep Zonp
15:10 -15:50	Self-Knowledge and Understanding Others Prof. Dr. Mehmet Zihni Sungur and Prof. Dr. Doğan Cüceloğlu videos	Ass. Prof. Zeynep Zonp
16:00 -16:40	Elective Courses	
16:50 -17:30	Elective Courses	

20.10.2022 THURSDAY		
---------------------	--	--

08:30 -09:10	Free Hour	
09:20 -10:00	Cell Injury	Ass.Prof. Kemal Behzatoğlu
10:10 -10:50	Cell Injury	Ass.Prof. Kemal Behzatoğlu
11:00 -11:40	Medication Administration	Ass.Prof. Dilara Bayram
11:50 -12:30	Medication Administration	Ass.Prof. Dilara Bayram
12:30 -13:30	Lunch Break	
13:30 -14:10	Free Hour	
14:20 -15:00	Free Hour	
15:10 -15:50	Educator Role of Nurse Adult Education	Ass. Prof. Zeynep Zonp
16:00 -16:40	Educator Role of Nurse Adult Education	Ass. Prof. Zeynep Zonp
16:50 -17:30	Educator Role of Nurse Adult Education	Ass. Prof. Zeynep Zonp

21.10.2022 FRIDAY		
08:30 -09:10	Clinical Practice	Prof. Dr. Vesile Ünver, Res. Asst. Tuğba Yorulmaz, Instr. Zehra Belhan, Assist. Prof.Nermin Ocaktan, Instr. Berrak Fulser, MSc RN. Canan Yüksel Acar
09:20 -10:00	Clinical Practice	Prof. Dr. Vesile Ünver, Res. Asst. Tuğba Yorulmaz, Instr. Zehra Belhan, Assist. Prof.Nermin Ocaktan, Instr. Berrak Fulser, MSc RN. Canan Yüksel Acar
10:10 -10:50	Clinical Practice	Prof. Dr. Vesile Ünver, Res. Asst. Tuğba Yorulmaz, Instr. Zehra Belhan, Assist. Prof.Nermin Ocaktan, Instr. Berrak Fulser, MSc RN. Canan Yüksel Acar
11:00 -11:40	Clinical Practice	Prof. Dr. Vesile Ünver, Res. Asst. Tuğba Yorulmaz, Instr. Zehra Belhan, Assist. Prof.Nermin Ocaktan, Instr. Berrak Fulser, MSc RN. Canan Yüksel Acar
11:50 -12:30	Clinical Practice	Prof. Dr. Vesile Ünver, Res. Asst. Tuğba Yorulmaz, Instr. Zehra Belhan, Assist. Prof.Nermin Ocaktan, Instr. Berrak Fulser, MSc RN. Canan Yüksel Acar
12:30 -13:30	Lunch Break	
13:30 -14:10	Clinical Practice	Prof. Dr. Vesile Ünver, Res. Asst. Tuğba Yorulmaz, Instr. Zehra Belhan, Assist. Prof.Nermin Ocaktan, Instr. Berrak Fulser, MSc RN. Canan Yüksel Acar
14:20 -15:00	Clinical Practice	Prof. Dr. Vesile Ünver, Res. Asst. Tuğba Yorulmaz, Instr. Zehra Belhan, Assist. Prof.Nermin Ocaktan, Instr. Berrak Fulser, MSc RN. Canan Yüksel Acar
15:10 -15:50	Clinical Practice	Prof. Dr. Vesile Ünver, Res. Asst. Tuğba Yorulmaz, Instr. Zehra Belhan, Assist. Prof.Nermin Ocaktan, Instr.

		Berrak Fulser, MSc RN. Canan Yüksel Acar
16:00 -16:40	Clinical Practice	Prof. Dr. Vesile Ünver, Res. Asst. Tuğba Yorulmaz, Instr. Zehra Belhan, Assist. Prof.Nermin Ocaktan, Instr. Berrak Fulser, MSc RN. Canan Yüksel Acar
16:50 -17:30	Free Hour	

24.10.2022 MONDAY		
08:30 -09:10	Free Hour	
09:20 -10:00	Heart and Circulatory System Diseases and Nursing care - 1	Instr.Zehra Belhan
10:10 -10:50	Heart and Circulatory System Diseases and Nursing care - 1	Instr.Zehra Belhan
11:00 -11:40	Heart and Circulatory System Diseases and Nursing care - 1	Instr.Zehra Belhan
11:50 -12:30	Heart and Circulatory System Diseases and Nursing care - 1	Instr.Zehra Belhan
12:30 -13:30	Lunch Break	
13:30 -14:10	Free Hour	
14:20 -15:00	Free Hour	
15:10 -15:50	Free Hour	
16:00 -16:40	Elective Courses	
16:50 -17:30	Elective Courses	

25.10.2022 TUESDAY		
08:30 -09:10	Free Hour	
09:20 -10:00	Free Hour	
10:10 -10:50	Free Hour	
11:00 -11:40	Free Hour	
11:50 -12:30	Free Hour	
12:30 -13:30	Lunch Break	
13:30 -14:10	Free Hour	
14:20 -15:00	Free Hour	
15:10 -15:50	Free Hour	
16:00 -16:40	Erik H. Erikson and Stages of Psychosocial Development	Ass. Prof. Zeynep Zonp
16:50 -17:30	Erik H. Erikson and Stages of Psychosocial Development	Ass. Prof. Zeynep Zonp

26.10.2022 WEDNESDAY		
08:30 -09:10	Free Hour	
09:20 -10:00	Lab: Blood transfusion	Prof. Dr. Vesile Ünver, Res. Asst. Tuğba Yorulmaz, Instr. Zehra Belhan, Assist. Prof.Nermin Ocaktan, Instr. Berrak Fulser, MSc RN. Canan Yüksel Acar
10:10 -10:50	Lab: Blood transfusion	Prof. Dr. Vesile Ünver, Res. Asst. Tuğba Yorulmaz, Instr. Zehra Belhan, Assist. Prof.Nermin Ocaktan, Instr. Berrak Fulser, MSc RN. Canan Yüksel Acar
11:00 -11:40	Lab: Blood transfusion	Prof. Dr. Vesile Ünver, Res. Asst. Tuğba Yorulmaz, Instr. Zehra Belhan, Assist. Prof.Nermin Ocaktan, Instr. Berrak Fulser, MSc RN. Canan Yüksel Acar

11:50 -12:30	Lab: Blood transfusion	Prof. Dr. Vesile Ünver, Res. Asst. Tuğba Yorulmaz, Instr. Zehra Belhan, Assist. Prof.Nermin Ocaktan, Instr. Berrak Fulser, MSc RN. Canan Yüksel Acar
12:30 -13:30	Lunch Break	
13:30 -14:10	Free Hour	
14:20 -15:00	A Kahoot study will be conducted on *Defense Mechanisms *Brain Anatomy and Physiology *Development Stages *Case study	Ass. Prof. Zeynep Zonp
15:10 -15:50	A Kahoot study will be conducted on *Defense Mechanisms *Brain Anatomy and Physiology *Development Stages *Case study	Ass. Prof. Zeynep Zonp
16:00 -16:40	Elective Courses	
16:50 -17:30	Elective Courses	

27.10.2022 THURSDAY

08:30 -09:10	Free Hour	
09:20 -10:00	Free Hour	
10:10 -10:50	Free Hour	
11:00 -11:40	Central Nervous System Drugs	Ass.Prof. Melis Yavuz
11:50 -12:30	Central Nervous System Drugs	Ass.Prof. Melis Yavuz
12:30 -13:30	Lunch Break	
13:30 -14:10	Free Hour	
14:20 -15:00	Free Hour	
15:10 -15:50	Curriculum Development -Teaching Goals (Writing Purpose and Goal, Creating Content) Training Needs Analysis	Ass. Prof. Zeynep Zonp
16:00 -16:40	Curriculum Development -Teaching Goals (Writing Purpose and Goal, Creating Content) Training Needs Analysis	Ass. Prof. Zeynep Zonp
16:50 -17:30	Curriculum Development -Teaching Goals (Writing Purpose and Goal, Creating Content) Training Needs Analysis	Ass. Prof. Zeynep Zonp

28.10.2022 FRIDAY

08:30 -09:10	Clinical Practice	Prof. Dr. Vesile Ünver, Res. Asst. Tuğba Yorulmaz, Instr. Zehra Belhan, Assist. Prof.Nermin Ocaktan, Instr. Berrak Fulser, MSc RN. Canan Yüksel Acar
09:20 -10:00	Clinical Practice	Prof. Dr. Vesile Ünver, Res. Asst. Tuğba Yorulmaz, Instr. Zehra Belhan, Assist. Prof.Nermin Ocaktan, Instr. Berrak Fulser, MSc RN. Canan Yüksel Acar
10:10 -10:50	Clinical Practice	Prof. Dr. Vesile Ünver, Res. Asst. Tuğba Yorulmaz, Instr. Zehra Belhan, Assist. Prof.Nermin Ocaktan, Instr. Berrak Fulser, MSc RN. Canan Yüksel Acar

11:00 -11:40	Clinical Practice	Prof. Dr. Vesile Ünver, Res. Asst. Tuğba Yorulmaz, Instr. Zehra Belhan, Assist. Prof.Nermin Ocaktan, Instr. Berrak Fulser, MSc RN. Canan Yüksel Acar
11:50 -12:30	Clinical Practice	Prof. Dr. Vesile Ünver, Res. Asst. Tuğba Yorulmaz, Instr. Zehra Belhan, Assist. Prof.Nermin Ocaktan, Instr. Berrak Fulser, MSc RN. Canan Yüksel Acar
12:30 -13:30	Lunch Break	
13:30 -14:10	Clinical Practice	Prof. Dr. Vesile Ünver, Res. Asst. Tuğba Yorulmaz, Instr. Zehra Belhan, Assist. Prof.Nermin Ocaktan, Instr. Berrak Fulser, MSc RN. Canan Yüksel Acar
14:20 -15:00	Clinical Practice	Prof. Dr. Vesile Ünver, Res. Asst. Tuğba Yorulmaz, Instr. Zehra Belhan, Assist. Prof.Nermin Ocaktan, Instr. Berrak Fulser, MSc RN. Canan Yüksel Acar
15:10 -15:50	Clinical Practice	Prof. Dr. Vesile Ünver, Res. Asst. Tuğba Yorulmaz, Instr. Zehra Belhan, Assist. Prof.Nermin Ocaktan, Instr. Berrak Fulser, MSc RN. Canan Yüksel Acar
16:00 -16:40	Clinical Practice	Prof. Dr. Vesile Ünver, Res. Asst. Tuğba Yorulmaz, Instr. Zehra Belhan, Assist. Prof.Nermin Ocaktan, Instr. Berrak Fulser, MSc RN. Canan Yüksel Acar
16:50 -17:30	Free Hour	

31.10.2022 MONDAY		
08:30 -09:10	Free Hour	
09:20 -10:00	Heart and Circulatory System Diseases and Nursing care – 2	Instr.Zehra Belhan
10:10 -10:50	Heart and Circulatory System Diseases and Nursing care – 2	Instr.Zehra Belhan
11:00 -11:40	Heart and Circulatory System Diseases and Nursing care – 2	Instr.Zehra Belhan
11:50 -12:30	Heart and Circulatory System Diseases and Nursing care - 2	Instr.Zehra Belhan
12:30 -13:30	Lunch Break	
13:30 -14:10	Free Hour	
14:20 -15:00	Free Hour	
15:10 -15:50	Free Hour	
16:00 -16:40	Elective Courses	
16:50 -17:30	Elective Courses	

01.11.2022 TUESDAY		
08:30 -09:10	Free Hour	
09:20 -10:00	Free Hour	
10:10 -10:50	Free Hour	
11:00 -11:40	Free Hour	

11:50 -12:30	Free Hour	
12:30 -13:30	Lunch Break	
13:30 -14:10	Free Hour	
14:20 -15:00	Free Hour	
15:10 -15:50	Free Hour	
16:00 -16:40	The Concept of Communication, Importance, Types	Ass. Prof. Zeynep Zonp
16:50 -17:30	The Concept of Communication, Importance, Types	Ass. Prof. Zeynep Zonp

02.11.2022 WEDNESDAY		
08:30 -09:10	Free Hour	
09:20 -10:00	Lab: ECG (electrocardiogram) and Basic Rhythms	Prof. Dr. Vesile Ünver, Res. Asst. Tuğba Yorulmaz, Instr. Zehra Belhan, Assist. Prof.Nermin Ocaktan, Instr. Berrak Fulser, MSc RN. Canan Yüksel Acar
10:10 -10:50	Lab: ECG (electrocardiogram) and Basic Rhythms	Prof. Dr. Vesile Ünver, Res. Asst. Tuğba Yorulmaz, Instr. Zehra Belhan, Assist. Prof.Nermin Ocaktan, Instr. Berrak Fulser, MSc RN. Canan Yüksel Acar
11:00 -11:40	Lab: ECG (electrocardiogram) and Basic Rhythms	Prof. Dr. Vesile Ünver, Res. Asst. Tuğba Yorulmaz, Instr. Zehra Belhan, Assist. Prof.Nermin Ocaktan, Instr. Berrak Fulser, MSc RN. Canan Yüksel Acar
11:50 -12:30	Lab: ECG (electrocardiogram) and Basic Rhythms	Prof. Dr. Vesile Ünver, Res. Asst. Tuğba Yorulmaz, Instr. Zehra Belhan, Assist. Prof.Nermin Ocaktan, Instr. Berrak Fulser, MSc RN. Canan Yüksel Acar
12:30 -13:30	Lunch Break	
13:30 -14:10	Free Hour	
14:20 -15:00	Picture Completion and Storytelling Work	Ass. Prof. Zeynep Zonp
15:10 -15:50	Picture Completion and Storytelling Work	Ass. Prof. Zeynep Zonp
16:00 -16:40	Elective Courses	
16:50 -17:30	Elective Courses	

03.11.2022 THURSDAY		
08:30 -09:10	Free Hour	
09:20 -10:00	Inflammation	Dr.Zeynep Tosuner
10:10 -10:50	Inflammation	Dr.Zeynep Tosuner
11:00 -11:40	Autonomic Nervous System Drugs	Ass.Prof. Dilara Bayram
11:50 -12:30	Autonomic Nervous System Drugs	Ass.Prof. Dilara Bayram
12:30 -13:30	Lunch Break	
13:30 -14:10	Free Hour	
14:20 -15:00	Free Hour	
15:10 -15:50	Teaching Methods and Techniques, Educational Technologies Effective Presentation Techniques	Ass. Prof. Zeynep Zonp
16:00 -16:40	Teaching Methods and Techniques, Educational Technologies Effective Presentation Techniques	Ass. Prof. Zeynep Zonp
16:50 -17:30	Teaching Methods and Techniques, Educational Technologies Effective Presentation Techniques	Ass. Prof. Zeynep Zonp

04.11.2022 FRIDAY		
08:30 -09:10	Clinical Practice	Prof. Dr. Vesile Ünver, Res. Asst. Tuğba Yorulmaz, Instr.

		Zehra Belhan, Assist. Prof.Nermin Ocaktan, Instr. Berrak Fulser, MSc RN. Canan Yüksel Acar
09:20 -10:00	Clinical Practice	Prof. Dr. Vesile Ünver, Res. Asst. Tuğba Yorulmaz, Instr. Zehra Belhan, Assist. Prof.Nermin Ocaktan, Instr. Berrak Fulser, MSc RN. Canan Yüksel Acar
10:10 -10:50	Clinical Practice	Prof. Dr. Vesile Ünver, Res. Asst. Tuğba Yorulmaz, Instr. Zehra Belhan, Assist. Prof.Nermin Ocaktan, Instr. Berrak Fulser, MSc RN. Canan Yüksel Acar
11:00 -11:40	Clinical Practice	Prof. Dr. Vesile Ünver, Res. Asst. Tuğba Yorulmaz, Instr. Zehra Belhan, Assist. Prof.Nermin Ocaktan, Instr. Berrak Fulser, MSc RN. Canan Yüksel Acar
11:50 -12:30	Clinical Practice	Prof. Dr. Vesile Ünver, Res. Asst. Tuğba Yorulmaz, Instr. Zehra Belhan, Assist. Prof.Nermin Ocaktan, Instr. Berrak Fulser, MSc RN. Canan Yüksel Acar
12:30 -13:30	Lunch Break	
13:30 -14:10	Clinical Practice	Prof. Dr. Vesile Ünver, Res. Asst. Tuğba Yorulmaz, Instr. Zehra Belhan, Assist. Prof.Nermin Ocaktan, Instr. Berrak Fulser, MSc RN. Canan Yüksel Acar
14:20 -15:00	Clinical Practice	Prof. Dr. Vesile Ünver, Res. Asst. Tuğba Yorulmaz, Instr. Zehra Belhan, Assist. Prof.Nermin Ocaktan, Instr. Berrak Fulser, MSc RN. Canan Yüksel Acar
15:10 -15:50	Clinical Practice	Prof. Dr. Vesile Ünver, Res. Asst. Tuğba Yorulmaz, Instr. Zehra Belhan, Assist. Prof.Nermin Ocaktan, Instr. Berrak Fulser, MSc RN. Canan Yüksel Acar
16:00 -16:40	Clinical Practice	Prof. Dr. Vesile Ünver, Res. Asst. Tuğba Yorulmaz, Instr. Zehra Belhan, Assist. Prof.Nermin Ocaktan, Instr. Berrak Fulser, MSc RN. Canan Yüksel Acar
16:50 -17:30	Free Hour	

07.11.2022 MONDAY		
08:30 -09:10	Free Hour	
09:20 -10:00	Respiratory System Diseases and nursing care	Instr.Zehra Belhan
10:10 -10:50	Respiratory System Diseases and nursing care	Instr.Zehra Belhan
11:00 -11:40	Respiratory System Diseases and nursing care	Instr.Zehra Belhan
11:50 -12:30	Respiratory System Diseases and nursing care	Instr.Zehra Belhan
12:30 -13:30	Lunch Break	
13:30 -14:10	Free Hour	

14:20 -15:00	Free Hour	
15:10 -15:50	Free Hour	
16:00 -16:40	Elective Courses	
16:50 -17:30	Elective Courses	

8.11.2022 TUESDAY		
08:30 -09:10	Free Hour	
09:20 -10:00	Free Hour	
10:10 -10:50	Free Hour	
11:00 -11:40	Free Hour	
11:50 -12:30	Free Hour	
12:30 -13:30	Lunch Break	
13:30 -14:10	Free Hour	
14:20 -15:00	Free Hour	
15:10 -15:50	Free Hour	
16:00 -16:40	Factors Affecting Communication * Knowing yourself * Empathy, listening, and perception * Culture, values, and emotions	Ass. Prof. Zeynep Zonp
16:50 -17:30	Factors Affecting Communication * Knowing yourself * Empathy, listening, and perception * Culture, values, and emotions	Ass. Prof. Zeynep Zonp

9.11.2022 WEDNESDAY		
08:30 -09:10	Free Hour	
09:20 -10:00	Lab: Percutaneous Coronary Intervention	Prof. Dr. Vesile Ünver, Res. Asst. Tuğba Yorulmaz, Instr. Zehra Belhan, Assist. Prof.Nermin Ocaktan, Instr. Berrak Fulser, MSc RN. Canan Yüksel Acar
10:10 -10:50	Lab: Percutaneous Coronary Intervention	Prof. Dr. Vesile Ünver, Res. Asst. Tuğba Yorulmaz, Instr. Zehra Belhan, Assist. Prof.Nermin Ocaktan, Instr. Berrak Fulser, MSc RN. Canan Yüksel Acar
11:00 -11:40	Lab: Percutaneous Coronary Intervention	Prof. Dr. Vesile Ünver, Res. Asst. Tuğba Yorulmaz, Instr. Zehra Belhan, Assist. Prof.Nermin Ocaktan, Instr. Berrak Fulser, MSc RN. Canan Yüksel Acar
11:50 -12:30	Lab: Percutaneous Coronary Intervention	Prof. Dr. Vesile Ünver, Res. Asst. Tuğba Yorulmaz, Instr. Zehra Belhan, Assist. Prof.Nermin Ocaktan, Instr. Berrak Fulser, MSc RN. Canan Yüksel Acar
12:30 -13:30	Lunch Break	
13:30 -14:10	Free Hour	
14:20 -15:00	Watching a Sexual Trauma video-Empathy Video *Case study	Ass. Prof. Zeynep Zonp
15:10 -15:50	Watching a Sexual Trauma video-Empathy Video *Case study	Ass. Prof. Zeynep Zonp
16:00 -16:40	Elective Courses	
16:50 -17:30	Elective Courses	

10.11.2022 THURSDAY		
08:30 -09:10	Free Hour	
09:20 -10:00	Regeneration	Ass.Prof. Kemal Behzatoğlu
10:10 -10:50	Regeneration	Ass.Prof. Kemal Behzatoğlu

11:00 -11:40	Antibiotics	Ass.Prof. Dilara Bayram
11:50 -12:30	Antibiotics	Ass.Prof. Dilara Bayram
12:30 -13:30	Lunch Break	
13:30 -14:10	Free Hour	
14:20 -15:00	Free Hour	
15:10 -15:50	Factors Affecting Learning and Creating a Learning Environment	Ass. Prof. Zeynep Zonp
16:00 -16:40	Factors Affecting Learning and Creating a Learning Environment	Ass. Prof. Zeynep Zonp
16:50 -17:30	Factors Affecting Learning and Creating a Learning Environment	Ass. Prof. Zeynep Zonp

11.11.2022FRIDAY		
08:30 -09:10	Clinical Practice	Prof. Dr. Vesile Ünver, Res. Asst. Tuğba Yorulmaz, Instr. Zehra Belhan, Assist. Prof.Nermin Ocaktan, Instr. Berrak Fulser, MSc RN. Canan Yüksel Acar
09:20 -10:00	Clinical Practice	Prof. Dr. Vesile Ünver, Res. Asst. Tuğba Yorulmaz, Instr. Zehra Belhan, Assist. Prof.Nermin Ocaktan, Instr. Berrak Fulser, MSc RN. Canan Yüksel Acar
10:10 -10:50	Clinical Practice	Prof. Dr. Vesile Ünver, Res. Asst. Tuğba Yorulmaz, Instr. Zehra Belhan, Assist. Prof.Nermin Ocaktan, Instr. Berrak Fulser, MSc RN. Canan Yüksel Acar
11:00 -11:40	Clinical Practice	Prof. Dr. Vesile Ünver, Res. Asst. Tuğba Yorulmaz, Instr. Zehra Belhan, Assist. Prof.Nermin Ocaktan, Instr. Berrak Fulser, MSc RN. Canan Yüksel Acar
11:50 -12:30	Clinical Practice	Prof. Dr. Vesile Ünver, Res. Asst. Tuğba Yorulmaz, Instr. Zehra Belhan, Assist. Prof.Nermin Ocaktan, Instr. Berrak Fulser, MSc RN. Canan Yüksel Acar
12:30 -13:30	Lunch Break	
13:30 -14:10	Clinical Practice	Prof. Dr. Vesile Ünver, Res. Asst. Tuğba Yorulmaz, Instr. Zehra Belhan, Assist. Prof.Nermin Ocaktan, Instr. Berrak Fulser, MSc RN. Canan Yüksel Acar
14:20 -15:00	Clinical Practice	Prof. Dr. Vesile Ünver, Res. Asst. Tuğba Yorulmaz, Instr. Zehra Belhan, Assist. Prof.Nermin Ocaktan, Instr. Berrak Fulser, MSc RN. Canan Yüksel Acar
15:10 -15:50	Clinical Practice	Prof. Dr. Vesile Ünver, Res. Asst. Tuğba Yorulmaz, Instr. Zehra Belhan, Assist. Prof.Nermin Ocaktan, Instr. Berrak Fulser, MSc RN. Canan Yüksel Acar
16:00 -16:40	Clinical Practice	Prof. Dr. Vesile Ünver, Res. Asst. Tuğba Yorulmaz, Instr.

		Zehra Belhan, Assist. Prof.Nermin Ocaktan, Instr. Berrak Fulser, MSc RN. Canan Yüksel Acar
16:50 -17:30	Free Hour	

14.11.2022 MONDAY		
08:30 -09:10	Free Hour	
09:20 -10:00	Oncology Nursing	Instr.Zehra Belhan
10:10 -10:50	Oncology Nursing	Instr.Zehra Belhan
11:00 -11:40	Oncology Nursing	Instr.Zehra Belhan
11:50 -12:30	Oncology Nursing	Instr.Zehra Belhan
12:30 -13:30	Lunch Break	
13:30 -14:10	Free Hour	
14:20 -15:00	Free Hour	
15:10 -15:50	Free Hour	
16:00 -16:40	Elective Courses	
16:50 -17:30	Elective Courses	

15.11.2022 TUESDAY		
08:30 -09:10	Free Hour	
09:20 -10:00	Free Hour	
10:10 -10:50	Free Hour	
11:00 -11:40	Free Hour	
11:50 -12:30	Free Hour	
12:30 -13:30	Lunch Break	
13:30 -14:10	Free Hour	
14:20 -15:00	Free Hour	
15:10 -15:50	Free Hour	
16:00 -16:40	Emotion-Thought-Behavior Processes and Cognitive Distortions	Ass. Prof. Zeynep Zonp
16:50 -17:30	Emotion-Thought-Behavior Processes and Cognitive Distortions	Ass. Prof. Zeynep Zonp

16.11.2022 WEDNESDAY		
08:30 -09:10	Free Hour	
09:20 -10:00	Lab: Percutaneous Coronary Intervention	Prof. Dr. Vesile Ünver, Res. Asst. Tuğba Yorulmaz, Instr. Zehra Belhan, Assist. Prof.Nermin Ocaktan, Instr. Berrak Fulser, MSc RN. Canan Yüksel Acar
10:10 -10:50	Lab: Percutaneous Coronary Intervention	Prof. Dr. Vesile Ünver, Res. Asst. Tuğba Yorulmaz, Instr. Zehra Belhan, Assist. Prof.Nermin Ocaktan, Instr. Berrak Fulser, MSc RN. Canan Yüksel Acar
11:00 -11:40	Lab: Percutaneous Coronary Intervention	Prof. Dr. Vesile Ünver, Res. Asst. Tuğba Yorulmaz, Instr. Zehra Belhan, Assist. Prof.Nermin Ocaktan, Instr. Berrak Fulser, MSc RN. Canan Yüksel Acar
11:50 -12:30	Lab: Percutaneous Coronary Intervention	Prof. Dr. Vesile Ünver, Res. Asst. Tuğba Yorulmaz, Instr. Zehra Belhan, Assist. Prof.Nermin Ocaktan, Instr. Berrak Fulser, MSc RN. Canan Yüksel Acar
12:30 -13:30	Free Hour	

13:30 -14:10	MIDTERM	Ass. Prof. Zeynep Zonp
14:20 -15:00	MIDTERM	Ass. Prof. Zeynep Zonp
15:10 -15:50	Free Hour	
16:00 -16:40	Elective Courses	
16:50 -17:30	Elective Courses	

17.11.2022 THURSDAY		
08:30 -09:10	Free Hour	
09:20 -10:00	Hemodynamic Disorders	Ass.Prof. Kemal Behzatoğlu
10:10 -10:50	Hemodynamic Disorders	Ass.Prof. Kemal Behzatoğlu
11:00 -11:40	Chemotherapeutics (Antivirals, Antifungals, Antiprotozoals)	Ass.Prof. Dilara Bayram
11:50 -12:30	Chemotherapeutics (Antivirals, Antifungals, Antiprotozoals)	Ass.Prof. Dilara Bayram
12:30 -13:30	Lunch Break	
13:30 -14:10	Free Hour	
14:20 -15:00	Free Hour	
15:10 -15:50	MIDTERM	Ass. Prof. Zeynep Zonp
16:00 -16:40	MIDTERM	Ass. Prof. Zeynep Zonp
16:50 -17:30	MIDTERM	Ass. Prof. Zeynep Zonp

18.11.2022 FRIDAY		
08:30 -09:10	Clinical Practice	Prof. Dr. Vesile Ünver, Res. Asst. Tuğba Yorulmaz, Instr. Zehra Belhan, Assist. Prof.Nermin Ocaktan, Instr. Berrak Fulser, MSc RN. Canan Yüksel Acar
09:20 -10:00	Clinical Practice	Prof. Dr. Vesile Ünver, Res. Asst. Tuğba Yorulmaz, Instr. Zehra Belhan, Assist. Prof.Nermin Ocaktan, Instr. Berrak Fulser, MSc RN. Canan Yüksel Acar
10:10 -10:50	Clinical Practice	Prof. Dr. Vesile Ünver, Res. Asst. Tuğba Yorulmaz, Instr. Zehra Belhan, Assist. Prof.Nermin Ocaktan, Instr. Berrak Fulser, MSc RN. Canan Yüksel Acar
11:00 -11:40	Clinical Practice	Prof. Dr. Vesile Ünver, Res. Asst. Tuğba Yorulmaz, Instr. Zehra Belhan, Assist. Prof.Nermin Ocaktan, Instr. Berrak Fulser, MSc RN. Canan Yüksel Acar
11:50 -12:30	Clinical Practice	Prof. Dr. Vesile Ünver, Res. Asst. Tuğba Yorulmaz, Instr. Zehra Belhan, Assist. Prof.Nermin Ocaktan, Instr. Berrak Fulser, MSc RN. Canan Yüksel Acar
12:30 -13:30	Lunch Break	
13:30 -14:10	Clinical Practice	Prof. Dr. Vesile Ünver, Res. Asst. Tuğba Yorulmaz, Instr. Zehra Belhan, Assist. Prof.Nermin Ocaktan, Instr. Berrak Fulser, MSc RN. Canan Yüksel Acar
14:20 -15:00	Clinical Practice	Prof. Dr. Vesile Ünver, Res. Asst. Tuğba Yorulmaz, Instr. Zehra Belhan, Assist.

		Prof.Nermin Ocaktan, Instr. Berrak Fulser, MSc RN. Canan Yüksel Acar
15:10 -15:50	Clinical Practice	Prof. Dr. Vesile Ünver, Res. Asst. Tuğba Yorulmaz, Instr. Zehra Belhan, Assist. Prof.Nermin Ocaktan, Instr. Berrak Fulser, MSc RN. Canan Yüksel Acar
16:00 -16:40	Clinical Practice	Prof. Dr. Vesile Ünver, Res. Asst. Tuğba Yorulmaz, Instr. Zehra Belhan, Assist. Prof.Nermin Ocaktan, Instr. Berrak Fulser, MSc RN. Canan Yüksel Acar
16:50 -17:30	Free Hour	

21.11.2022 MONDAY		
08:30 - 09:10	Free Hour	
09:20 - 10:00	MIDTERM EXAM	Instr.Zehra Belhan
10:10 - 10:50	MIDTERM EXAM	Instr.Zehra Belhan
11:00 - 11:40	MIDTERM EXAM	Instr.Zehra Belhan
11:50 - 12:30	MIDTERM EXAM	Instr.Zehra Belhan
12:30 - 13:30	Lunch Break	
13:30 - 14:10	Free Hour	
14:20 - 15:00	Free Hour	
15:10 - 15:50	Free Hour	
16:00 - 16:40	Elective Courses	
16:50 - 17:30	Elective Courses	

22.11.2022 TUESDAY		
08:30 -09:10	Free Hour	
09:20 -10:00	Free Hour	
10:10 -10:50	Free Hour	
11:00 -11:40	Free Hour	
11:50 -12:30	Free Hour	
12:30 -13:30	Lunch Break	
13:30 -14:10	Free Hour	
14:20 -15:00	Free Hour	
15:10 -15:50	Free Hour	
16:00 -16:40	MIDTERM	Ass. Prof. Zeynep Zonp
16:50 -17:30	MIDTERM	Ass. Prof. Zeynep Zonp

23.11.2022 WEDNESDAY		
08:30 -09:10	Free Hour	
09:20 -10:00	Lab: Oxygen and Inhaler drug applications	Prof. Dr. Vesile Ünver, Res. Asst. Tuğba Yorulmaz, Instr. Zehra Belhan, Assist. Prof.Nermin Ocaktan, Instr. Berrak Fulser, MSc RN. Canan Yüksel Acar

10:10 -10:50	Lab: Oxygen and Inhaler drug applications	Prof. Dr. Vesile Ünver, Res. Asst. Tuğba Yorulmaz, Instr. Zehra Belhan, Assist. Prof.Nermin Ocaktan, Instr. Berrak Fulser, MSc RN. Canan Yüksel Acar
11:00 -11:40	Lab: Oxygen and Inhaler drug applications	Prof. Dr. Vesile Ünver, Res. Asst. Tuğba Yorulmaz, Instr. Zehra Belhan, Assist. Prof.Nermin Ocaktan, Instr. Berrak Fulser, MSc RN. Canan Yüksel Acar
11:50 -12:30	Lab: Oxygen and Inhaler drug applications	Prof. Dr. Vesile Ünver, Res. Asst. Tuğba Yorulmaz, Instr. Zehra Belhan, Assist. Prof.Nermin Ocaktan, Instr. Berrak Fulser, MSc RN. Canan Yüksel Acar
12:30 -13:30	Lunch	
13:30 -14:10	Case Studies related to Emotion-Thought-Behavior Processes and Cognitive Distortions	Ass. Prof. Zeynep Zonp
14:20 -15:00	Case Studies related to Emotion-Thought-Behavior Processes and Cognitive Distortions	Ass. Prof. Zeynep Zonp
15:10 -15:50	Free Hour	
16:00 -16:40	Elective Courses	
16:50 -17:30	Elective Courses	

24.11.2022 THURSDAY		
08:30 -09:10	Free Hour	
09:20 -10:00	REVIEW OF LECTURES	Ass.Prof. Kemal Behzatoğlu
10:10 -10:50	REVIEW OF LECTURES	Ass.Prof. Kemal Behzatoğlu
11:00 -11:40	MIDTERM EXAM	Ass.Prof. Dilara Bayram
11:50 -12:30	MIDTERM EXAM	Ass.Prof. Dilara Bayram
12:30 -13:30	Lunch Break	
13:30 -14:10	Free Hour	
14:20 -15:00	Free Hour	
15:10 -15:50	Material Design in Patient/Health Education	Ass. Prof. Zeynep Zonp
16:00 -16:40	Material Design in Patient/Health Education	Ass. Prof. Zeynep Zonp
16:50 -17:30	Material Design in Patient/Health Education	Ass. Prof. Zeynep Zonp

25.11.2022 FRIDAY		
08:30 -09:10	Clinical Practice	Prof. Dr. Vesile Ünver, Res. Asst. Tuğba Yorulmaz, Instr. Zehra Belhan, Assist. Prof.Nermin Ocaktan, Instr. Berrak Fulser, MSc RN. Canan Yüksel Acar
09:20 -10:00	Clinical Practice	Prof. Dr. Vesile Ünver, Res. Asst. Tuğba Yorulmaz, Instr. Zehra Belhan, Assist. Prof.Nermin Ocaktan, Instr. Berrak Fulser, MSc RN. Canan Yüksel Acar
10:10 -10:50	Clinical Practice	Prof. Dr. Vesile Ünver, Res. Asst. Tuğba Yorulmaz, Instr. Zehra Belhan, Assist. Prof.Nermin Ocaktan, Instr. Berrak Fulser, MSc RN. Canan Yüksel Acar
11:00 -11:40	Clinical Practice	Prof. Dr. Vesile Ünver, Res. Asst. Tuğba Yorulmaz, Instr. Zehra Belhan, Assist. Prof.Nermin Ocaktan, Instr.

		Berrak Fulser, MSc RN. Canan Yüksel Acar
11:50 -12:30	Clinical Practice	Prof. Dr. Vesile Ünver, Res. Asst. Tuğba Yorulmaz, Instr. Zehra Belhan, Assist. Prof.Nermin Ocaktan, Instr. Berrak Fulser, MSc RN. Canan Yüksel Acar
12:30 -13:30	Lunch Break	
13:30 -14:10	Clinical Practice	Prof. Dr. Vesile Ünver, Res. Asst. Tuğba Yorulmaz, Instr. Zehra Belhan, Assist. Prof.Nermin Ocaktan, Instr. Berrak Fulser, MSc RN. Canan Yüksel Acar
14:20 -15:00	Clinical Practice	Prof. Dr. Vesile Ünver, Res. Asst. Tuğba Yorulmaz, Instr. Zehra Belhan, Assist. Prof.Nermin Ocaktan, Instr. Berrak Fulser, MSc RN. Canan Yüksel Acar
15:10 -15:50	Clinical Practice	Prof. Dr. Vesile Ünver, Res. Asst. Tuğba Yorulmaz, Instr. Zehra Belhan, Assist. Prof.Nermin Ocaktan, Instr. Berrak Fulser, MSc RN. Canan Yüksel Acar
16:00 -16:40	Clinical Practice	Prof. Dr. Vesile Ünver, Res. Asst. Tuğba Yorulmaz, Instr. Zehra Belhan, Assist. Prof.Nermin Ocaktan, Instr. Berrak Fulser, MSc RN. Canan Yüksel Acar
16:50 -17:30	Free Hour	

28.11.2022 MONDAY		
08:30 -09:10	Free Hour	
09:20 -10:00	Endocrine system diseases and nursing care	Instr.Zehra Belhan
10:10 -10:50	Endocrine system diseases and nursing care	Instr.Zehra Belhan
11:00 -11:40	Endocrine system diseases and nursing care	Instr.Zehra Belhan
11:50 -12:30	Endocrine system diseases and nursing care	Instr.Zehra Belhan
12:30 -13:30	Lunch Break	
13:30 -14:10	Free Hour	
14:20 -15:00	Free Hour	
15:10 -15:50	Free Hour	
16:00 -16:40	Elective Courses	
16:50 -17:30	Elective Courses	

29.11.2022 TUESDAY		
08:30 -09:10	Free Hour	
09:20 -10:00	Free Hour	
10:10 -10:50	Free Hour	
11:00 -11:40	Free Hour	
11:50 -12:30	Free Hour	
12:30 -13:30	Lunch Break	
13:30 -14:10	Free Hour	
14:20 -15:00	Free Hour	
15:10 -15:50	Free Hour	
16:00 -16:40	Importance of Nurse-Patient Communication	Ass. Prof. Zeynep Zonp

	* Basic Items *Therapeutic Communication Techniques *Non-therapeutic Communication Techniques	
16:50 -17:30	Importance of Nurse-Patient Communication * Basic Items *Therapeutic Communication Techniques *Non-therapeutic Communication Techniques	Ass. Prof. Zeynep Zonp

30.11.2022 WEDNESDAY		
08:30 -09:10	Free Hour	
09:20 -10:00	Lab: Oxygen and Inhaler drug applications	Prof. Dr. Vesile Ünver, Res. Asst. Tuğba Yorulmaz, Instr. Zehra Belhan, Assist. Prof.Nermin Ocaktan, Instr. Berrak Fulser, MSc RN. Canan Yüksel Acar
10:10 -10:50	Lab: Oxygen and Inhaler drug applications	Prof. Dr. Vesile Ünver, Res. Asst. Tuğba Yorulmaz, Instr. Zehra Belhan, Assist. Prof.Nermin Ocaktan, Instr. Berrak Fulser, MSc RN. Canan Yüksel Acar
11:00 -11:40	Lab: Oxygen and Inhaler drug applications	Prof. Dr. Vesile Ünver, Res. Asst. Tuğba Yorulmaz, Instr. Zehra Belhan, Assist. Prof.Nermin Ocaktan, Instr. Berrak Fulser, MSc RN. Canan Yüksel Acar
11:50 -12:30	Lab: Oxygen and Inhaler drug applications	Prof. Dr. Vesile Ünver, Res. Asst. Tuğba Yorulmaz, Instr. Zehra Belhan, Assist. Prof.Nermin Ocaktan, Instr. Berrak Fulser, MSc RN. Canan Yüksel Acar
12:30 -13:30	Lunch Break	
13:30 -14:10	*Exercises related to assertivity	Ass. Prof. Zeynep Zonp
14:20 -15:00	*Exercises related to assertivity	Ass. Prof. Zeynep Zonp
15:10 -15:50	Free Hour	
16:00 -16:40	Elective Courses	
16:50 -17:30	Elective Courses	

01.12.2022 THURSDAY		
08:30 -09:10	Free Hour	
09:20 -10:00	MIDTERM	Ass.Prof. Kemal Behzatoğlu
10:10 -10:50	MIDTERM	Ass.Prof. Kemal Behzatoğlu
11:00 -11:40	Cardiovascular System Drugs	Ass.Prof. Melis Yavuz
11:50 -12:30	Cardiovascular System Drugs	Ass.Prof. Melis Yavuz
12:30 -13:30	Lunch Break	
13:30 -14:10	Free Hour	
14:20 -15:00	Free Hour	
15:10 -15:50	Quantification and consideration	Ass. Prof. Zeynep Zonp
16:00 -16:40	Quantification and consideration	Ass. Prof. Zeynep Zonp
16:50 -17:30	Quantification and consideration	Ass. Prof. Zeynep Zonp

02.12.2022FRIDAY		
08:30 -09:10	Clinical Practice	Prof. Dr. Vesile Ünver, Res. Asst. Tuğba Yorulmaz, Instr. Zehra Belhan, Assist. Prof.Nermin Ocaktan, Instr. Berrak Fulser, MSc RN. Canan Yüksel Acar
09:20 -10:00	Clinical Practice	Prof. Dr. Vesile Ünver, Res. Asst. Tuğba Yorulmaz, Instr.

		Zehra Belhan, Assist. Prof.Nermin Ocaktan, Instr. Berrak Fulser, MSc RN. Canan Yüksel Acar
10:10 -10:50	Clinical Practice	Prof. Dr. Vesile Ünver, Res. Asst. Tuğba Yorulmaz, Instr. Zehra Belhan, Assist. Prof.Nermin Ocaktan, Instr. Berrak Fulser, MSc RN. Canan Yüksel Acar
11:00 -11:40	Clinical Practice	Prof. Dr. Vesile Ünver, Res. Asst. Tuğba Yorulmaz, Instr. Zehra Belhan, Assist. Prof.Nermin Ocaktan, Instr. Berrak Fulser, MSc RN. Canan Yüksel Acar
11:50 -12:30	Clinical Practice	Prof. Dr. Vesile Ünver, Res. Asst. Tuğba Yorulmaz, Instr. Zehra Belhan, Assist. Prof.Nermin Ocaktan, Instr. Berrak Fulser, MSc RN. Canan Yüksel Acar
12:30 -13:30	Lunch Break	
13:30 -14:10	Clinical Practice	Prof. Dr. Vesile Ünver, Res. Asst. Tuğba Yorulmaz, Instr. Zehra Belhan, Assist. Prof.Nermin Ocaktan, Instr. Berrak Fulser, MSc RN. Canan Yüksel Acar
14:20 -15:00	Clinical Practice	Prof. Dr. Vesile Ünver, Res. Asst. Tuğba Yorulmaz, Instr. Zehra Belhan, Assist. Prof.Nermin Ocaktan, Instr. Berrak Fulser, MSc RN. Canan Yüksel Acar
15:10 -15:50	Clinical Practice	Prof. Dr. Vesile Ünver, Res. Asst. Tuğba Yorulmaz, Instr. Zehra Belhan, Assist. Prof.Nermin Ocaktan, Instr. Berrak Fulser, MSc RN. Canan Yüksel Acar
16:00 -16:40	Clinical Practice	Prof. Dr. Vesile Ünver, Res. Asst. Tuğba Yorulmaz, Instr. Zehra Belhan, Assist. Prof.Nermin Ocaktan, Instr. Berrak Fulser, MSc RN. Canan Yüksel Acar
16:50 -17:30	Free Hour	

05.12.2022 MONDAY		
08:30 -09:10	Free Hour	
09:20 -10:00	Urinary diseases and Nursing Care	Instr.Zehra Belhan
10:10 -10:50	Urinary diseases and Nursing Care	Instr.Zehra Belhan
11:00 -11:40	Urinary diseases and Nursing Care	Instr.Zehra Belhan
11:50 -12:30	Urinary diseases and Nursing Care	Instr.Zehra Belhan
12:30 -13:30	Lunch Break	
13:30 -14:10	Free Hour	
14:20 -15:00	Free Hour	
15:10 -15:50	Free Hour	
16:00 -16:40	Elective Courses	
16:50 -17:30	Elective Courses	

06.12.2022 TUESDAY		
08:30 -09:10	Free Hour	
09:20 -10:00	Free Hour	
10:10 -10:50	Free Hour	
11:00 -11:40	Free Hour	
11:50 -12:30	Free Hour	
12:30 -13:30	Lunch Break	
13:30 -14:10	Free Hour	
14:20 -15:00	Free Hour	
15:10 -15:50	Free Hour	
16:00 -16:40	Awareness, Psychosocial Self-Care, Self-compassion concepts	Ass. Prof. Zeynep Zonp
16:50 -17:30	Awareness, Psychosocial Self-Care, Self-compassion concepts	Ass. Prof. Zeynep Zonp

07.12.2022 WEDNESDAY		
08:30 -09:10	Free Hour	
09:20 -10:00	Renal replacement therapies	Prof. Dr. Vesile Ünver, Res. Asst. Tuğba Yorulmaz, Instr. Zehra Belhan, Assist. Prof. Nermin Ocaktan, Instr. Berrak Fulser, MSc RN. Canan Yüksel Acar
10:10 -10:50	Renal replacement therapies	Prof. Dr. Vesile Ünver, Res. Asst. Tuğba Yorulmaz, Instr. Zehra Belhan, Assist. Prof. Nermin Ocaktan, Instr. Berrak Fulser, MSc RN. Canan Yüksel Acar
11:00 -11:40	Renal replacement therapies	Prof. Dr. Vesile Ünver, Res. Asst. Tuğba Yorulmaz, Instr. Zehra Belhan, Assist. Prof. Nermin Ocaktan, Instr. Berrak Fulser, MSc RN. Canan Yüksel Acar
11:50 -12:30	Renal replacement therapies	Prof. Dr. Vesile Ünver, Res. Asst. Tuğba Yorulmaz, Instr. Zehra Belhan, Assist. Prof. Nermin Ocaktan, Instr. Berrak Fulser, MSc RN. Canan Yüksel Acar
12:30 -13:30	Lunch Break	
13:30 -14:10	Self-compassion exercises	Ass. Prof. Zeynep Zonp
14:20 -15:00	Self-compassion exercises	Ass. Prof. Zeynep Zonp
15:10 -15:50	Free Hour	
16:00 -16:40	Elective Courses	
16:50 -17:30	Elective Courses	

08.12.2022 THURSDAY		
08:30 -09:10	Free Hour	
09:20 -10:00	Immunology	Ass. Prof. Kemal Behzatoğlu
10:10 -10:50	Immunology	Ass. Prof. Kemal Behzatoğlu
11:00 -11:40	Endocrine System Drugs	Ass. Prof. Melis Yavuz
11:50 -12:30	Endocrine System Drugs	Ass. Prof. Melis Yavuz
12:30 -13:30	Lunch Break	
13:30 -14:10	Free Hour	
14:20 -15:00	Free Hour	
15:10 -15:50	Education of Patients and Their Relatives, Health Literacy	Ass. Prof. Zeynep Zonp
16:00 -16:40	Education of Patients and Their Relatives, Health Literacy	Ass. Prof. Zeynep Zonp

16:50 -17:30	Education of Patients and Their Relatives, Health Literacy	Ass. Prof. Zeynep Zonp
--------------	--	------------------------

09.12.2022 FRIDAY		
08:30 -09:10	Clinical Practice	Prof. Dr. Vesile Ünver, Res. Asst. Tuğba Yorulmaz, Instr. Zehra Belhan, Assist. Prof.Nermin Ocaktan, Instr. Berrak Fulser, MSc RN. Canan Yüksel Acar
09:20 -10:00	Clinical Practice	Prof. Dr. Vesile Ünver, Res. Asst. Tuğba Yorulmaz, Instr. Zehra Belhan, Assist. Prof.Nermin Ocaktan, Instr. Berrak Fulser, MSc RN. Canan Yüksel Acar
10:10 -10:50	Clinical Practice	Prof. Dr. Vesile Ünver, Res. Asst. Tuğba Yorulmaz, Instr. Zehra Belhan, Assist. Prof.Nermin Ocaktan, Instr. Berrak Fulser, MSc RN. Canan Yüksel Acar
11:00 -11:40	Clinical Practice	Prof. Dr. Vesile Ünver, Res. Asst. Tuğba Yorulmaz, Instr. Zehra Belhan, Assist. Prof.Nermin Ocaktan, Instr. Berrak Fulser, MSc RN. Canan Yüksel Acar
11:50 -12:30	Clinical Practice	Prof. Dr. Vesile Ünver, Res. Asst. Tuğba Yorulmaz, Instr. Zehra Belhan, Assist. Prof.Nermin Ocaktan, Instr. Berrak Fulser, MSc RN. Canan Yüksel Acar
12:30 -13:30	Lunch Break	
13:30 -14:10	Clinical Practice	Prof. Dr. Vesile Ünver, Res. Asst. Tuğba Yorulmaz, Instr. Zehra Belhan, Assist. Prof.Nermin Ocaktan, Instr. Berrak Fulser, MSc RN. Canan Yüksel Acar
14:20 -15:00	Clinical Practice	Prof. Dr. Vesile Ünver, Res. Asst. Tuğba Yorulmaz, Instr. Zehra Belhan, Assist. Prof.Nermin Ocaktan, Instr. Berrak Fulser, MSc RN. Canan Yüksel Acar
15:10 -15:50	Clinical Practice	Prof. Dr. Vesile Ünver, Res. Asst. Tuğba Yorulmaz, Instr. Zehra Belhan, Assist. Prof.Nermin Ocaktan, Instr. Berrak Fulser, MSc RN. Canan Yüksel Acar
16:00 -16:40	Clinical Practice	Prof. Dr. Vesile Ünver, Res. Asst. Tuğba Yorulmaz, Instr. Zehra Belhan, Assist. Prof.Nermin Ocaktan, Instr. Berrak Fulser, MSc RN. Canan Yüksel Acar
16:50 -17:30	Free Hour	

12.12.2022 MONDAY		
08:30 -09:10	Free Hour	

09:20 -10:00	Neurological diseases and Nursing Care	Instr.Zehra Belhan
10:10 -10:50	Neurological diseases and Nursing Care	Instr.Zehra Belhan
11:00 -11:40	Neurological diseases and Nursing Care	Instr.Zehra Belhan
11:50 -12:30	Neurological diseases and Nursing Care	Instr.Zehra Belhan
12:30 -13:30	Lunch Break	
13:30 -14:10	Free Hour	
14:20 -15:00	Free Hour	
15:10 -15:50	Free Hour	
16:00 -16:40	Elective Courses	
16:50 -17:30	Elective Courses	

13.12.2022 TUESDAY		
08:30 -09:10	Free Hour	
09:20 -10:00	Free Hour	
10:10 -10:50	Free Hour	
11:00 -11:40	Free Hour	
11:50 -12:30	Free Hour	
12:30 -13:30	Lunch Break	
13:30 -14:10	Free Hour	
14:20 -15:00	Free Hour	
15:10 -15:50	Free Hour	
16:00 -16:40	Situations with Problems in Relationship-1 *Anxiety *Anger *Aggression *Crying patient	Ass. Prof. Zeynep Zonp
16:50 -17:30	Situations with Problems in Relationship-1 *Anxiety *Anger *Aggression *Crying patient	Ass. Prof. Zeynep Zonp

14.12.2022 WEDNESDAY		
08:30 -09:10	Free Hour	
09:20 -10:00	Lab: Hypoglycemia management	Prof. Dr. Vesile Ünver, Res. Asst. Tuğba Yorulmaz, Instr. Zehra Belhan, Assist. Prof.Nermin Ocaktan, Instr. Berrak Fulser, MSc RN. Canan Yüksel Acar
10:10 -10:50	Lab: Hypoglycemia management	Prof. Dr. Vesile Ünver, Res. Asst. Tuğba Yorulmaz, Instr. Zehra Belhan, Assist. Prof.Nermin Ocaktan, Instr. Berrak Fulser, MSc RN. Canan Yüksel Acar
11:00 -11:40	Lab: Hypoglycemia management	Prof. Dr. Vesile Ünver, Res. Asst. Tuğba Yorulmaz, Instr. Zehra Belhan, Assist. Prof.Nermin Ocaktan, Instr. Berrak Fulser, MSc RN. Canan Yüksel Acar
11:50 -12:30	Lab: Hypoglycemia management	Prof. Dr. Vesile Ünver, Res. Asst. Tuğba Yorulmaz, Instr. Zehra Belhan, Assist. Prof.Nermin Ocaktan, Instr. Berrak Fulser, MSc RN. Canan Yüksel Acar
12:30 -13:30	Lunch Break	
13:30 -14:10	Grading- Student Presentations	Ass. Prof. Zeynep Zonp

14:20 -15:00	Grading- Student Presentations	Ass. Prof. Zeynep Zonp
15:10 -15:50	Free Hour	
16:00 -16:40	Elective Courses	
16:50 -17:30	Elective Courses	

15.12.2022 THURSDAY		
08:30 -09:10	Free Hour	
09:20 -10:00	Infectious Diseases	Ass.Prof. Kemal Behzatođlu
10:10 -10:50	Infectious Diseases	Ass.Prof. Kemal Behzatođlu
11:00 -11:40	Anticancer Drugs, Immunotherapy Drugs	Ass.Prof. Melis Yavuz
11:50 -12:30	Anticancer Drugs, Immunotherapy Drugs	Ass.Prof. Melis Yavuz
12:30 -13:30	Lunch Break	
13:30 -14:10	Free Hour	
14:20 -15:00	Free Hour	
15:10 -15:50	Health education	
16:00 -16:40	Health education	
16:50 -17:30	Health education	

16.12.2022 FRIDAY		
08:30 -09:10	Clinical Practice	Prof. Dr. Vesile Ünver, Res. Asst. Tuđba Yorulmaz, Instr. Zehra Belhan, Assist. Prof.Nermin Ocaktan, Instr. Berrak Fulser, MSc RN. Canan Yüksel Acar
09:20 -10:00	Clinical Practice	Prof. Dr. Vesile Ünver, Res. Asst. Tuđba Yorulmaz, Instr. Zehra Belhan, Assist. Prof.Nermin Ocaktan, Instr. Berrak Fulser, MSc RN. Canan Yüksel Acar
10:10 -10:50	Clinical Practice	Prof. Dr. Vesile Ünver, Res. Asst. Tuđba Yorulmaz, Instr. Zehra Belhan, Assist. Prof.Nermin Ocaktan, Instr. Berrak Fulser, MSc RN. Canan Yüksel Acar
11:00 -11:40	Clinical Practice	Prof. Dr. Vesile Ünver, Res. Asst. Tuđba Yorulmaz, Instr. Zehra Belhan, Assist. Prof.Nermin Ocaktan, Instr. Berrak Fulser, MSc RN. Canan Yüksel Acar
11:50 -12:30	Clinical Practice	Prof. Dr. Vesile Ünver, Res. Asst. Tuđba Yorulmaz, Instr. Zehra Belhan, Assist. Prof.Nermin Ocaktan, Instr. Berrak Fulser, MSc RN. Canan Yüksel Acar
12:30 -13:30	Lunch Break	
13:30 -14:10	Clinical Practice	Prof. Dr. Vesile Ünver, Res. Asst. Tuđba Yorulmaz, Instr. Zehra Belhan, Assist. Prof.Nermin Ocaktan, Instr. Berrak Fulser, MSc RN. Canan Yüksel Acar
14:20 -15:00	Clinical Practice	Prof. Dr. Vesile Ünver, Res. Asst. Tuđba Yorulmaz, Instr. Zehra Belhan, Assist. Prof.Nermin Ocaktan, Instr. Berrak Fulser, MSc RN. Canan Yüksel Acar

15:10 -15:50	Clinical Practice	Prof. Dr. Vesile Ünver, Res. Asst. Tuğba Yorulmaz, Instr. Zehra Belhan, Assist. Prof.Nermin Ocaktan, Instr. Berrak Fulser, MSc RN. Canan Yüksel Acar
16:00 -16:40	Clinical Practice	Prof. Dr. Vesile Ünver, Res. Asst. Tuğba Yorulmaz, Instr. Zehra Belhan, Assist. Prof.Nermin Ocaktan, Instr. Berrak Fulser, MSc RN. Canan Yüksel Acar
16:50 -17:30	Free Hour	

19.12.2022 MONDAY		
08:30 -09:10	Free Hour	
09:20 -10:00	Digestive System Diseases and Nursing Care	Instr.Zehra Belhan
10:10 -10:50	Digestive System Diseases and Nursing Care	Instr.Zehra Belhan
11:00 -11:40	Digestive System Diseases and Nursing Care	Instr.Zehra Belhan
11:50 -12:30	Digestive System Diseases and Nursing Care	Instr.Zehra Belhan
12:30 -13:30	Lunch Break	
13:30 -14:10	Free Hour	
14:20 -15:00	Free Hour	
15:10 -15:50	Free Hour	
16:00 -16:40	Elective Courses	
16:50 -17:30	Elective Courses	

20.12.2022 TUESDAY		
08:30 -09:10	Free Hour	
09:20 -10:00	Free Hour	
10:10 -10:50	Free Hour	
11:00 -11:40	Free Hour	
11:50 -12:30	Free Hour	
12:30 -13:30	Lunch Break	
13:30 -14:10	Free Hour	
14:20 -15:00	Free Hour	
15:10 -15:50	Free Hour	
16:00 -16:40	Zor Hastalar ve Kişilerle Ne Şekilde Çalışabiliriz. Neler Yapmalıyız?	Ass. Prof. Zeynep Zonp
16:50 -17:30	Zor Hastalar ve Kişilerle Ne Şekilde Çalışabiliriz. Neler Yapmalıyız?	Ass. Prof. Zeynep Zonp

21.12.2022 WEDNESDAY		
08:30 -09:10	Free Hour	
09:20 -10:00	Lab: Hypoglycemia management	Prof. Dr. Vesile Ünver, Res. Asst. Tuğba Yorulmaz, Instr. Zehra Belhan, Assist. Prof.Nermin Ocaktan, Instr. Berrak Fulser, MSc RN. Canan Yüksel Acar
10:10 -10:50	Lab: Hypoglycemia management	Prof. Dr. Vesile Ünver, Res. Asst. Tuğba Yorulmaz, Instr. Zehra Belhan, Assist. Prof.Nermin Ocaktan, Instr. Berrak Fulser, MSc RN. Canan Yüksel Acar
11:00 -11:40	Lab: Hypoglycemia management	Prof. Dr. Vesile Ünver, Res. Asst. Tuğba Yorulmaz, Instr. Zehra Belhan, Assist. Prof.Nermin Ocaktan, Instr.

		Berrak Fulser, MSc RN. Canan Yüksel Acar
11:50 -12:30	Lab: Hypoglycemia management	Prof. Dr. Vesile Ünver, Res. Asst. Tuğba Yorulmaz, Instr. Zehra Belhan, Assist. Prof.Nermin Ocaktan, Instr. Berrak Fulser, MSc RN. Canan Yüksel Acar
12:30 -13:30	Lunch Break	
13:30 -14:10	Grading- Student Presentations	Ass. Prof. Zeynep Zonp
14:20 -15:00	Grading- Student Presentations	Ass. Prof. Zeynep Zonp
15:10 -15:50	Free Hour	
16:00 -16:40	Elective Courses	
16:50 -17:30	Elective Courses	

22.12.2022 THURSDAY		
08:30 -09:10	Free Hour	
09:20 -10:00	Neoplasia I	Ass.Prof. Kemal Behzatoğlu
10:10 -10:50	Neoplasia I	Ass.Prof. Kemal Behzatoğlu
11:00 -11:40	Hemostasis Drugs, Vitamins	Ass.Prof. Dilara Bayram
11:50 -12:30	Hemostasis Drugs, Vitamins	Ass.Prof. Dilara Bayram
12:30 -13:30	Lunch Break	
13:30 -14:10	Free Hour	
14:20 -15:00	Free Hour	
15:10 -15:50	Continuing Professional Development (In-Service Training, Orientation Training) Clinical Teaching (Vocational Education)	Ass. Prof. Zeynep Zonp
16:00 -16:40	Continuing Professional Development (In-Service Training, Orientation Training) Clinical Teaching (Vocational Education)	Ass. Prof. Zeynep Zonp
16:50 -17:30	Continuing Professional Development (In-Service Training, Orientation Training) Clinical Teaching (Vocational Education)	Ass. Prof. Zeynep Zonp

23.12.2022 FRIDAY		
08:30 -09:10	Clinical Practice	Prof. Dr. Vesile Ünver, Res. Asst. Tuğba Yorulmaz, Instr. Zehra Belhan, Assist. Prof.Nermin Ocaktan, Instr. Berrak Fulser, MSc RN. Canan Yüksel Acar
09:20 -10:00	Clinical Practice	Prof. Dr. Vesile Ünver, Res. Asst. Tuğba Yorulmaz, Instr. Zehra Belhan, Assist. Prof.Nermin Ocaktan, Instr. Berrak Fulser, MSc RN. Canan Yüksel Acar
10:10 -10:50	Clinical Practice	Prof. Dr. Vesile Ünver, Res. Asst. Tuğba Yorulmaz, Instr. Zehra Belhan, Assist. Prof.Nermin Ocaktan, Instr. Berrak Fulser, MSc RN. Canan Yüksel Acar
11:00 -11:40	Clinical Practice	Prof. Dr. Vesile Ünver, Res. Asst. Tuğba Yorulmaz, Instr. Zehra Belhan, Assist. Prof.Nermin Ocaktan, Instr. Berrak Fulser, MSc RN. Canan Yüksel Acar
11:50 -12:30	Clinical Practice	Prof. Dr. Vesile Ünver, Res. Asst. Tuğba Yorulmaz, Instr.

		Zehra Belhan, Assist. Prof.Nermin Ocaktan, Instr. Berrak Fulser, MSc RN. Canan Yüksel Acar
12:30 -13:30	Lunch Break	
13:30 -14:10	Clinical Practice	Prof. Dr. Vesile Ünver, Res. Asst. Tuğba Yorulmaz, Instr. Zehra Belhan, Assist. Prof.Nermin Ocaktan, Instr. Berrak Fulser, MSc RN. Canan Yüksel Acar
14:20 -15:00	Clinical Practice	Prof. Dr. Vesile Ünver, Res. Asst. Tuğba Yorulmaz, Instr. Zehra Belhan, Assist. Prof.Nermin Ocaktan, Instr. Berrak Fulser, MSc RN. Canan Yüksel Acar
15:10 -15:50	Clinical Practice	Prof. Dr. Vesile Ünver, Res. Asst. Tuğba Yorulmaz, Instr. Zehra Belhan, Assist. Prof.Nermin Ocaktan, Instr. Berrak Fulser, MSc RN. Canan Yüksel Acar
16:00 -16:40	Clinical Practice	Prof. Dr. Vesile Ünver, Res. Asst. Tuğba Yorulmaz, Instr. Zehra Belhan, Assist. Prof.Nermin Ocaktan, Instr. Berrak Fulser, MSc RN. Canan Yüksel Acar
16:50 -17:30	Free Hour	

26.12.2022 MONDAY		
08:30 -09:10	Free Hour	
09:20 -10:00	Rheumatological Diseases and Nursing Care	Instr.Zehra Belhan
10:10 -10:50	Rheumatological Diseases and Nursing Care	Instr.Zehra Belhan
11:00 -11:40	Rheumatological Diseases and Nursing Care	Instr.Zehra Belhan
11:50 -12:30	Rheumatological Diseases and Nursing Care	Instr.Zehra Belhan
12:30 -13:30	Lunch Break	
13:30 -14:10	Free Hour	
14:20 -15:00	Free Hour	
15:10 -15:50	Free Hour	
16:00 -16:40	Elective Courses	
16:50 -17:30	Elective Courses	

27.12.2022 TUESDAY		
08:30 -09:10	Free Hour	
09:20 -10:00	Free Hour	
10:10 -10:50	Free Hour	
11:00 -11:40	Free Hour	
11:50 -12:30	Free Hour	
12:30 -13:30	Lunch Break	
13:30 -14:10	Free Hour	
14:20 -15:00	Free Hour	
15:10 -15:50	Free Hour	
16:00 -16:40	Situations with Problems in Relationship-2 *Terminal Patient *Delivering Bad News * Communication with Patient Relatives	Ass. Prof. Zeynep Zonp

16:50 -17:30	Situations with Problems in Relationship-2 *Terminal Patient *Delivering Bad News * Communication with Patient Relatives	Ass. Prof. Zeynep Zonp
--------------	---	------------------------

28.12.2022 WEDNESDAY		
08:30 -09:10	Free Hour	
09:20 -10:00	Lab exam	Prof. Dr. Vesile Ünver, Res. Asst. Tuğba Yorulmaz, Instr. Zehra Belhan, Assist. Prof. Nermin Ocaktan, Instr. Berrak Fulser, MSc RN. Canan Yüksel Acar
10:10 -10:50	Lab exam	Prof. Dr. Vesile Ünver, Res. Asst. Tuğba Yorulmaz, Instr. Zehra Belhan, Assist. Prof. Nermin Ocaktan, Instr. Berrak Fulser, MSc RN. Canan Yüksel Acar
11:00 -11:40	Lab exam	Prof. Dr. Vesile Ünver, Res. Asst. Tuğba Yorulmaz, Instr. Zehra Belhan, Assist. Prof. Nermin Ocaktan, Instr. Berrak Fulser, MSc RN. Canan Yüksel Acar
11:50 -12:30	Lab exam	Prof. Dr. Vesile Ünver, Res. Asst. Tuğba Yorulmaz, Instr. Zehra Belhan, Assist. Prof. Nermin Ocaktan, Instr. Berrak Fulser, MSc RN. Canan Yüksel Acar
12:30 -13:30	Lunch Break	
13:30 -14:10	Free Hour	
14:20 -15:00	Grading- Student Presentations	Ass. Prof. Zeynep Zonp
15:10 -15:50	Grading- Student Presentations	Ass. Prof. Zeynep Zonp
16:00 -16:40	Elective Courses	
16:50 -17:30	Elective Courses	

29.12.2022 THURSDAY		
08:30 -09:10	Free Hour	
09:20 -10:00	Neoplasia II	Ass. Prof. Kemal Behzatoğlu
10:10 -10:50	Neoplasia II	Ass. Prof. Kemal Behzatoğlu
11:00 -11:40	Pain Medications	Ass. Prof. Dilara Bayram
11:50 -12:30	Pain Medications	Ass. Prof. Dilara Bayram
12:30 -13:30	Lunch Break	
13:30 -14:10	Free Hour	
14:20 -15:00	Free Hour	
15:10 -15:50	Presentations	Ass. Prof. Zeynep Zonp
16:00 -16:40	Presentations	Ass. Prof. Zeynep Zonp
16:50 -17:30	Presentations	Ass. Prof. Zeynep Zonp

30.12.2022 FRIDAY		
08:30 -09:10	Clinical Practice	Prof. Dr. Vesile Ünver, Res. Asst. Tuğba Yorulmaz, Instr. Zehra Belhan, Assist. Prof. Nermin Ocaktan, Instr. Berrak Fulser, MSc RN. Canan Yüksel Acar
09:20 -10:00	Clinical Practice	Prof. Dr. Vesile Ünver, Res. Asst. Tuğba Yorulmaz, Instr. Zehra Belhan, Assist.

		Prof.Nermin Ocaktan, Instr. Berrak Fulser, MSc RN. Canan Yüksel Acar
10:10 -10:50	Clinical Practice	Prof. Dr. Vesile Ünver, Res. Asst. Tuğba Yorulmaz, Instr. Zehra Belhan, Assist. Prof.Nermin Ocaktan, Instr. Berrak Fulser, MSc RN. Canan Yüksel Acar
11:00 -11:40	Clinical Practice	Prof. Dr. Vesile Ünver, Res. Asst. Tuğba Yorulmaz, Instr. Zehra Belhan, Assist. Prof.Nermin Ocaktan, Instr. Berrak Fulser, MSc RN. Canan Yüksel Acar
11:50 -12:30	Clinical Practice	Prof. Dr. Vesile Ünver, Res. Asst. Tuğba Yorulmaz, Instr. Zehra Belhan, Assist. Prof.Nermin Ocaktan, Instr. Berrak Fulser, MSc RN. Canan Yüksel Acar
12:30 -13:30	Lunch Break	
13:30 -14:10	Clinical Practice	Prof. Dr. Vesile Ünver, Res. Asst. Tuğba Yorulmaz, Instr. Zehra Belhan, Assist. Prof.Nermin Ocaktan, Instr. Berrak Fulser, MSc RN. Canan Yüksel Acar
14:20 -15:00	Clinical Practice	Prof. Dr. Vesile Ünver, Res. Asst. Tuğba Yorulmaz, Instr. Zehra Belhan, Assist. Prof.Nermin Ocaktan, Instr. Berrak Fulser, MSc RN. Canan Yüksel Acar
15:10 -15:50	Clinical Practice	Prof. Dr. Vesile Ünver, Res. Asst. Tuğba Yorulmaz, Instr. Zehra Belhan, Assist. Prof.Nermin Ocaktan, Instr. Berrak Fulser, MSc RN. Canan Yüksel Acar
16:00 -16:40	Clinical Practice	Prof. Dr. Vesile Ünver, Res. Asst. Tuğba Yorulmaz, Instr. Zehra Belhan, Assist. Prof.Nermin Ocaktan, Instr. Berrak Fulser, MSc RN. Canan Yüksel Acar
16:50 -17:30	Free Hour	

02.01.2023 MONDAY		
08:30 -09:10	Free Hour	
09:20 -10:00	Oncology presentations Review and Course Evaluation	Instr.Zehra Belhan
10:10 -10:50	Oncology presentations Review and Course Evaluation	Instr.Zehra Belhan
11:00 -11:40	Oncology presentations Review and Course Evaluation	Instr.Zehra Belhan
11:50 -12:30	Oncology presentations Review and Course Evaluation	Instr.Zehra Belhan
12:30 -13:30	Lunch Break	
13:30 -14:10	Free Hour	

14:20 -15:00	Free Hour	
15:10 -15:50	Free Hour	
16:00 -16:40	Free Hour	
16:50 -17:30	Free Hour	

03.01.2023 TUESDAY		
08:30 -09:10	Free Hour	
09:20 -10:00	Free Hour	
10:10 -10:50	Free Hour	
11:00 -11:40	Free Hour	
11:50 -12:30	Free Hour	
12:30 -13:30	Lunch Break	
13:30 -14:10	Free Hour	
14:20 -15:00	Free Hour	
15:10 -15:50	Free Hour	
16:00 -16:40	*Counselling *Corporate Communication Rules	Ass. Prof. Zeynep Zonp
16:50 -17:30	*Counselling *Corporate Communication Rules	Ass. Prof. Zeynep Zonp

04.01.2023 WEDNESDAY		
08:30 -09:10	Free Hour	
09:20 -10:00	Lab exam	Prof. Dr. Vesile Ünver, Res. Asst. Tuğba Yorulmaz, Instr. Zehra Belhan, Assist. Prof.Nermin Ocaktan, Instr. Berrak Fulser, MSc RN. Canan Yüksel Acar
10:10 -10:50	Lab exam	Prof. Dr. Vesile Ünver, Res. Asst. Tuğba Yorulmaz, Instr. Zehra Belhan, Assist. Prof.Nermin Ocaktan, Instr. Berrak Fulser, MSc RN. Canan Yüksel Acar
11:00 -11:40	Lab exam	Prof. Dr. Vesile Ünver, Res. Asst. Tuğba Yorulmaz, Instr. Zehra Belhan, Assist. Prof.Nermin Ocaktan, Instr. Berrak Fulser, MSc RN. Canan Yüksel Acar
11:50 -12:30	Lab exam	Prof. Dr. Vesile Ünver, Res. Asst. Tuğba Yorulmaz, Instr. Zehra Belhan, Assist. Prof.Nermin Ocaktan, Instr. Berrak Fulser, MSc RN. Canan Yüksel Acar
12:30 -13:30	Lunch Break	
13:30 -14:10	Free Hour	
14:20 -15:00	Grading- Student Presentations	Ass. Prof. Zeynep Zonp
15:10 -15:50	Grading- Student Presentations	Ass. Prof. Zeynep Zonp
16:00 -16:40	Elective Courses	
16:50 -17:30	Elective Courses	

05.01.2023 THURSDAY		
08:30 -09:10	Free Hour	
09:20 -10:00	Review Of Lectures	Ass.Prof. Kemal Behzatoğlu
10:10 -10:50	Review Of Lectures	Ass.Prof. Kemal Behzatoğlu
11:00 -11:40	Anesthetics	Ass.Prof. Dilara Bayram
11:50 -12:30	Anesthetics	Ass.Prof. Dilara Bayram
12:30 -13:30	Lunch Break	

13:30 -14:10	Free Hour	
14:20 -15:00	Free Hour	
15:10 -15:50	Presentations-Course Evaluation	Ass. Prof. Zeynep Zonp
16:00 -16:40	Presentations-Course Evaluation	Ass. Prof. Zeynep Zonp
16:50 -17:30	Presentations-Course Evaluation	Ass. Prof. Zeynep Zonp

06.01.2023 FRIDAY		
08:30 -09:10	Clinical Practice	Prof. Dr. Vesile Ünver, Res. Asst. Tuğba Yorulmaz, Instr. Zehra Belhan, Assist. Prof.Nermin Ocaktan, Instr. Berrak Fulser, MSc RN. Canan Yüksel Acar
09:20 -10:00	Clinical Practice	Prof. Dr. Vesile Ünver, Res. Asst. Tuğba Yorulmaz, Instr. Zehra Belhan, Assist. Prof.Nermin Ocaktan, Instr. Berrak Fulser, MSc RN. Canan Yüksel Acar
10:10 -10:50	Clinical Practice	Prof. Dr. Vesile Ünver, Res. Asst. Tuğba Yorulmaz, Instr. Zehra Belhan, Assist. Prof.Nermin Ocaktan, Instr. Berrak Fulser, MSc RN. Canan Yüksel Acar
11:00 -11:40	Clinical Practice	Prof. Dr. Vesile Ünver, Res. Asst. Tuğba Yorulmaz, Instr. Zehra Belhan, Assist. Prof.Nermin Ocaktan, Instr. Berrak Fulser, MSc RN. Canan Yüksel Acar
11:50 -12:30	Clinical Practice	Prof. Dr. Vesile Ünver, Res. Asst. Tuğba Yorulmaz, Instr. Zehra Belhan, Assist. Prof.Nermin Ocaktan, Instr. Berrak Fulser, MSc RN. Canan Yüksel Acar
12:30 -13:30	Lunch Break	
13:30 -14:10	Clinical Practice	Prof. Dr. Vesile Ünver, Res. Asst. Tuğba Yorulmaz, Instr. Zehra Belhan, Assist. Prof.Nermin Ocaktan, Instr. Berrak Fulser, MSc RN. Canan Yüksel Acar
14:20 -15:00	Clinical Practice	Prof. Dr. Vesile Ünver, Res. Asst. Tuğba Yorulmaz, Instr. Zehra Belhan, Assist. Prof.Nermin Ocaktan, Instr. Berrak Fulser, MSc RN. Canan Yüksel Acar
15:10 -15:50	Clinical Practice	Prof. Dr. Vesile Ünver, Res. Asst. Tuğba Yorulmaz, Instr. Zehra Belhan, Assist. Prof.Nermin Ocaktan, Instr. Berrak Fulser, MSc RN. Canan Yüksel Acar
16:00 -16:40	Clinical Practice	Prof. Dr. Vesile Ünver, Res. Asst. Tuğba Yorulmaz, Instr. Zehra Belhan, Assist. Prof.Nermin Ocaktan, Instr. Berrak Fulser, MSc RN. Canan Yüksel Acar
16:50 -17:30	Free Hour	





ACIBADEM

MEHMET ALİ AYDINLAR
UNIVERSITY

0216 500 4444 acibadem.edu.tr